


LOC I-FFV	APP CRS	Rwy Idg	7540
111.3	139°	TDZE	23
		Apt Elev	30

ILS or LOC RWY 14

SARASOTA/BRADENTON INTL (SRQ)

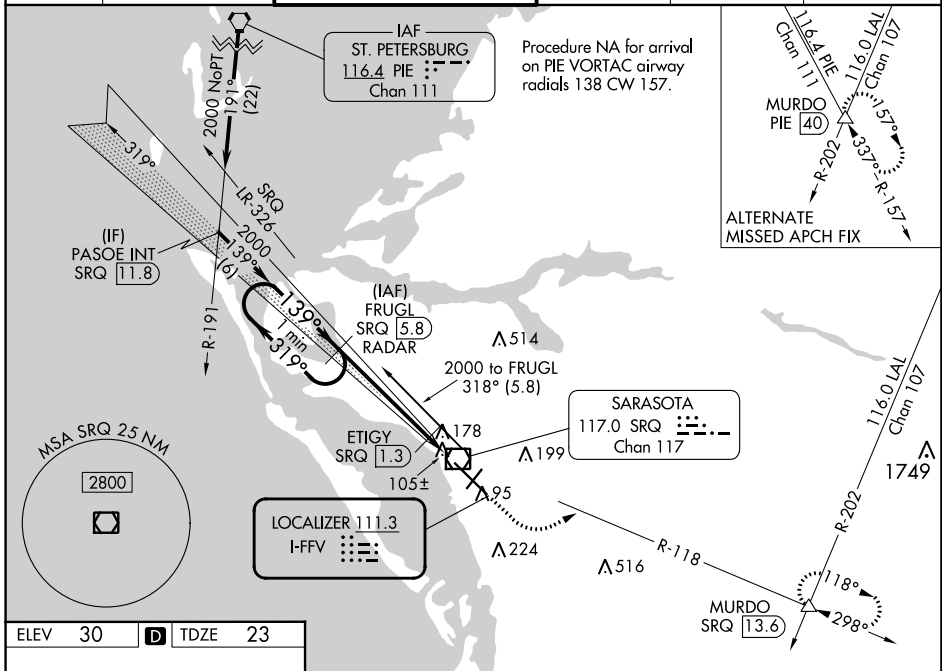
DME or RADAR required for LOC only.

⚠ When control tower closed, S-ILS 14 Minimums NA; increase S-LOC 14 Cats A and B and ETIGY Fix Minimums S-LOC 14 all Cats visibility to 1 mile. When control tower closed, inop table does not apply to S-LOC 14 Cats A and B and ETIGY Fix Minimums S-LOC 14 all Cats.

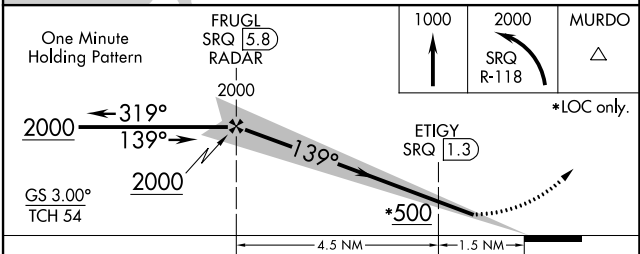
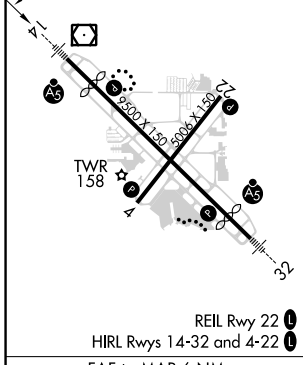
MALSR


MISSED APPROACH: Climb to 1000 then climbing left turn to 2000 on SRQ VOR/DME R-118 to MURDO INT/SRQ 13.6 DME and hold.

ATIS 124.375	TAMPA APP CON 119.65 353.575	SARASOTA TOWER ★ 120.1(CTAF) 0 256.8	GND CON 121.9 273.6	CLNC DEL 118.25	UNICOM 122.95
------------------------	--	--	-------------------------------	---------------------------	-------------------------



ELEV 30	D	TDZE 23
---------	----------	---------



CATEGORY	A	B	C	D
S-ILS 14	223-1/2 200 (200-1/2)			
S-LOC 14	500-1/2	477 (500-1/2)	500-1	477 (500-1)
CIRCLING	500-1	470 (500-1)	600-1 1/2	600-2
	ETIGY FIX MINIMUMS			
S-LOC 14	360-1/2 337 (400-1/2)			
CIRCLING	500-1	470 (500-1)	600-1 1/2	600-2
	570 (600-1 1/2) 570 (600-2)			

FAF to MAP 6 NM					
Knots	60	90	120	150	180
Min:Sec	6:00	4:00	3:00	2:24	2:00

SE-3, 28 NOV 2024 to 26 DEC 2024

SE-3, 28 NOV 2024 to 26 DEC 2024