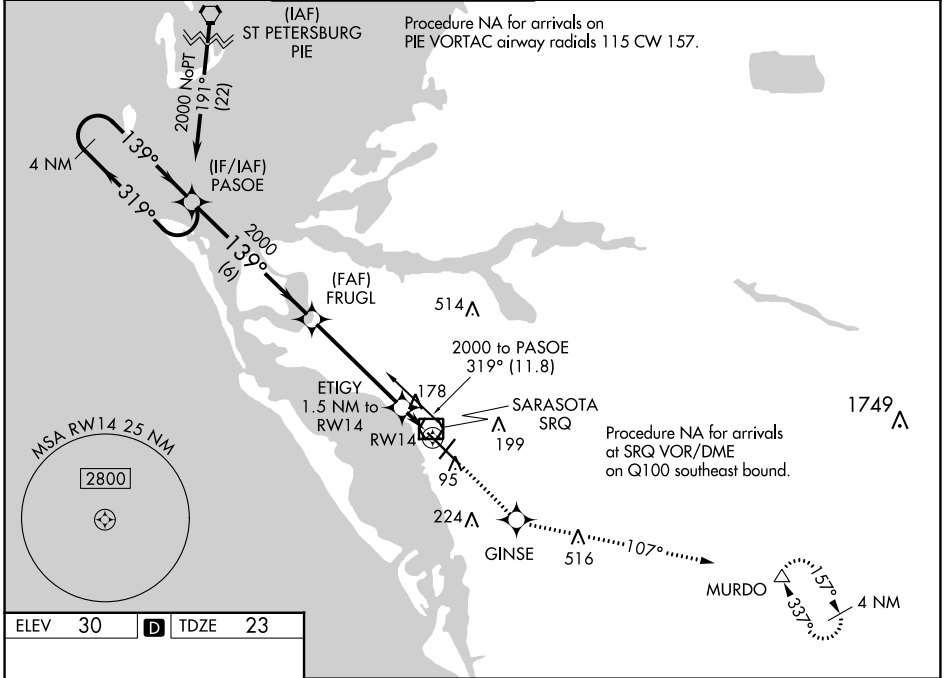


WAAS CH 86705 W 14A	APP CRS 139°	Rwy Idg 7540 TDZE 23 Apt Elev 30
---	------------------------	---

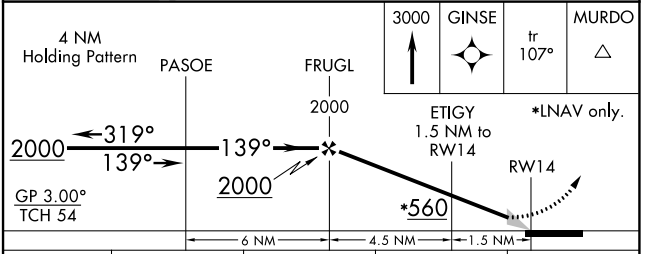
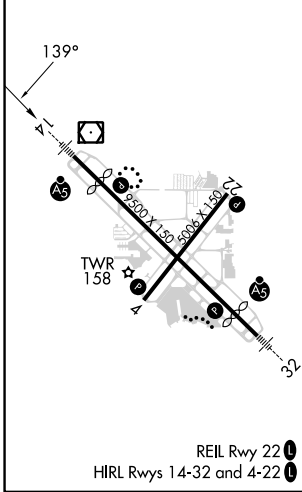
RNAV (GPS) RWY 14

SARASOTA/BRADENTON INTL (SRQ)

RNP APCH.		MALSR	MISSED APPROACH: Climb to 3000 direct GINSE and on track 107° to MURDO and hold.		
<p>▼ For uncompensated Baro-VNAV systems, LNAV/VNAV NA below -15°C or above 43°C. When control tower closed, LPV and LNAV/VNAV NA; increase LNAV all Cats visibility to 1 mile. When control tower closed, inop table does not apply to LNAV Cats A and B. When control tower closed, for inop MALSR, increase LNAV Cats C and D visibility to 1½ mile.</p>					
ATIS 124.375	TAMPA APP CON 119.65 353.575	SARASOTA TOWER ★ 120.1(CTAF) 0 256.8	GND CON 121.9 273.6	CLNC DEL 118.25	UNICOM 122.95



ELEV 30	D	TDZE 23
---------	----------	---------



CATEGORY	A	B	C	D
LPV DA	223-½		200 (200-½)	
LNAV/VNAV DA	489-1½		466 (500-1½)	
LNAV MDA	440-½	417 (500-½)	440-¾	417 (500-¾)
CIRCLING	500-1	470 (500-1)	600-1½ 570 (600-1½)	600-2 570 (600-2)

SE-3, 28 NOV 2024 to 26 DEC 2024

SE-3, 28 NOV 2024 to 26 DEC 2024