

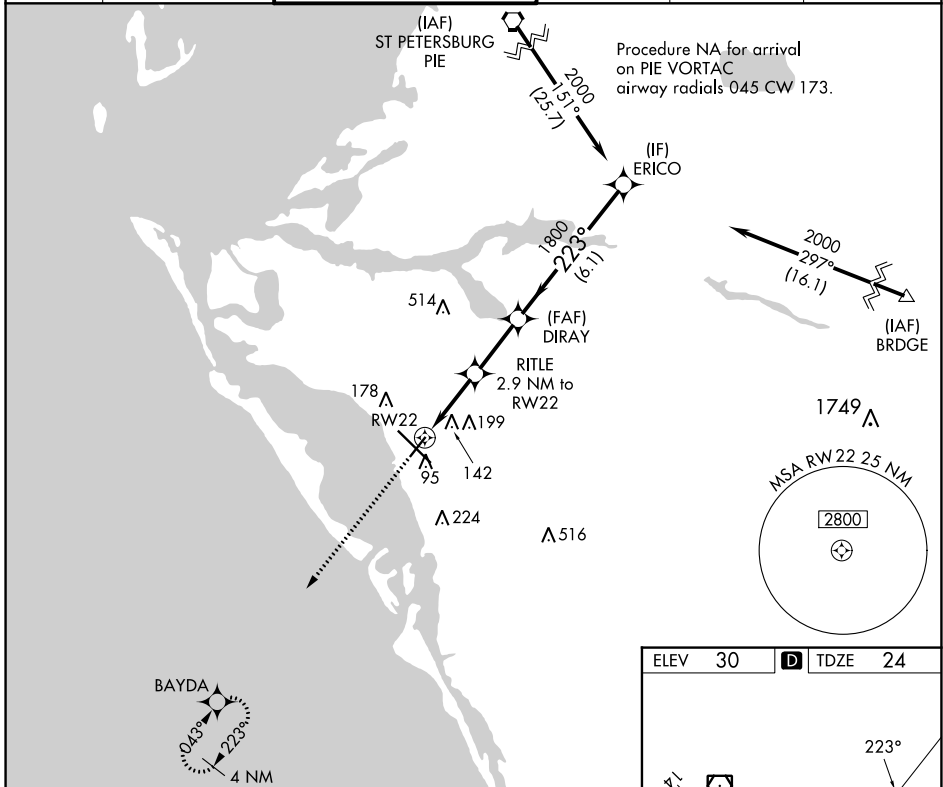
APP CRS	Rwy Idg	<b>5006</b>
<b>223°</b>	TDZE	<b>24</b>
	Apt Elev	<b>30</b>

# RNAV (GPS) RWY 22

SARASOTA/BRADENTON INTL (SRQ)

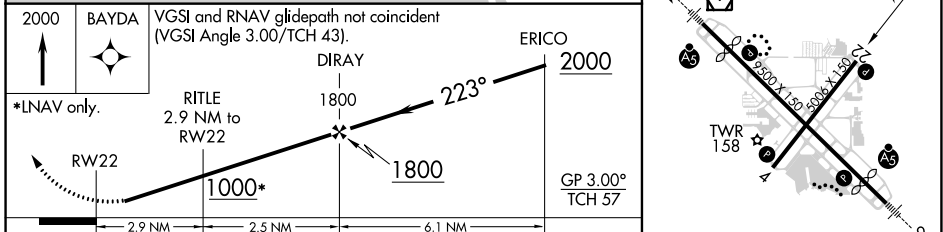
RNP APCH.		MISSED APPROACH: Climb to 2000 direct BAYDA and hold.			
<p><b>▼</b> Rwy 22 helicopter visibility reduction below 1 SM NA. For uncompensated Baro-VNAV systems, LNAV/VNAV NA below -1.5°C or above 43°C.</p>					

ATIS	TAMPA APP CON	SARASOTA TOWER*	GND CON	CLNC DEL	UNICOM
<b>124.375</b>	<b>119.65 353.575</b>	<b>120.1(CTAF) 256.8</b>	<b>121.9 273.6</b>	<b>118.25</b>	<b>122.95</b>



SE-3, 28 NOV 2024 to 26 DEC 2024

SE-3, 28 NOV 2024 to 26 DEC 2024



ELEV	30	TDZE	24	
CATEGORY	A	B	C	D
LNAV/VNAV DA		303-1	279 (300-1)	
LNAV MDA		400-1	376 (400-1)	
CIRCLING	500-1	470 (500-1)	600-1½ 570 (600-1½)	600-2 570 (600-2)