

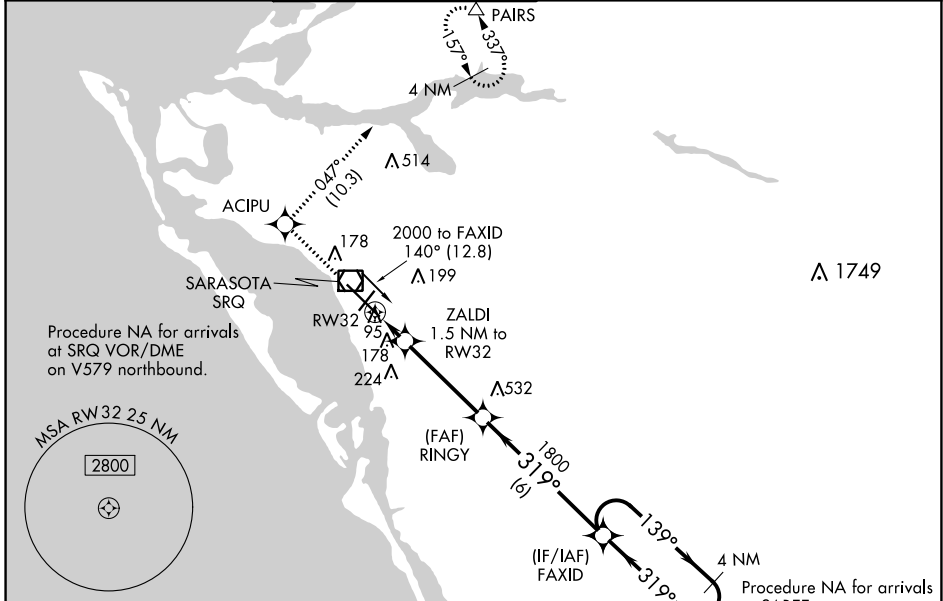
WAAS CH <b>72605</b>	APP CRS <b>319°</b>	Rwy Idg TDZE Apt Elev	<b>7510</b> <b>27</b> <b>30</b>
-------------------------	------------------------	-----------------------------	---------------------------------------

# RNAV (GPS) RWY 32

SARASOTA/BRADENTON INTL (SRQ)

RNP APCH. ▼ For uncompensated Baro-VNAV systems, LNAV/VNAV NA below -15°C or above 43°C. When control tower closed, LPV and LNAV/VNAV NA; increase LNAV all Cats visibility to 1 mile. When control tower closed, inop table does not apply to LNAV Cats A and B. When control tower closed, for inop MALSRL, increase LNAV Cat C and D visibility to 1½ mile.	MALSRL 	MISSED APPROACH: Climb to 3000 direct ACIPU and on track 047° to PAIRS and hold, continue climb-in-hold to 3000.
---	------------	--

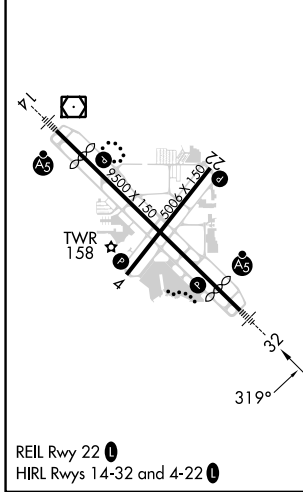
ATIS <b>124.375</b>	TAMPA APP CON <b>119.65 353.575</b>	SARASOTA TOWER ★ <b>120.1(CTAF) 0 256.8</b>	GND CON <b>121.9 273.6</b>	CLNC DEL <b>118.25</b>	UNICOM <b>122.95</b>
------------------------	--	--	-------------------------------	---------------------------	-------------------------



SE-3, 28 NOV 2024 to 26 DEC 2024

SE-3, 28 NOV 2024 to 26 DEC 2024

ELEV 30	<b>D</b>	TDZE 27
---------	----------	---------



3000	ACIPU	tr 047°	PAIRS	FAXID	4 NM Holding Pattern
*LNAV only.	ZALDI 1.5 NM to RWY 32	RINGY 1800	319°	139°	2000
	RWY 32	540*	1800	319°	GP 3.00° TCH 53
	1.5 NM	3.9 NM	6 NM		
CATEGORY	A	B	C	D	
LPV DA		227-½	200 (200-½)		
LNAV/DA VNAV		463-1	436 (500-1)		
LNAV MDA	440-½	413 (500-½)	440-¾	413 (500-¾)	
CIRCLING	500-1	470 (500-1)	600-1½	570 (600-1½)	600-2
				570 (600-2)	