

WAAS CH <b>99420</b> <b>W04A</b>	APP CRS <b>043°</b>	Rwy Idg <b>5006</b> TDZE <b>23</b> Apt Elev <b>30</b>
--	------------------------	---

# RNAV (GPS) RWY 4

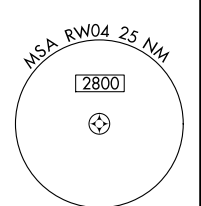
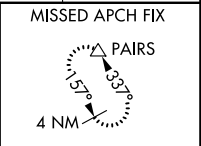
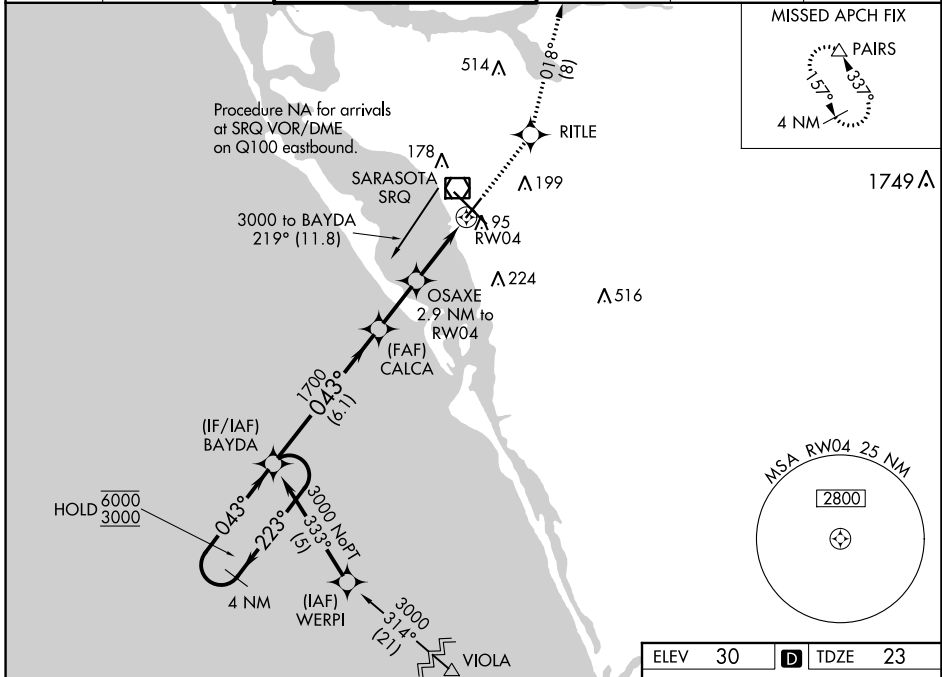
SARASOTA/BRADENTON INTL (SRQ)

RNP APCH.

**▼** Rwy 4 helicopter visibility reduction below 3/4 SM NA.  
For uncompensated Baro-VNAV systems, LNAV/VNAV NA below -15°C or above 43°C.

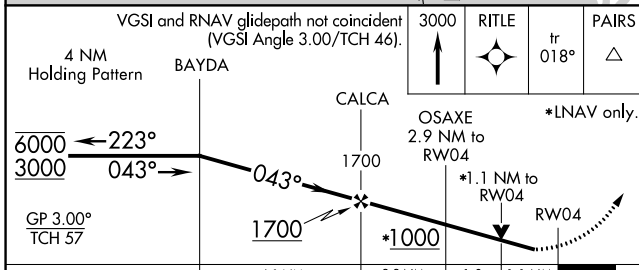
MISSED APPROACH: Climb to 3000 direct RITL and on track 018° to PAIRS and hold, continue climb-in-hold to 3000.

ATIS <b>124.375</b>	TAMPA APP CON <b>119.65 353.575</b>	SARASOTA TOWER ★ <b>120.1(CTAF) 0 256.8</b>	GND CON <b>121.9 273.6</b>	CLNC DEL <b>118.25</b>	UNICOM <b>122.95</b>
------------------------	--	--	-------------------------------	---------------------------	-------------------------

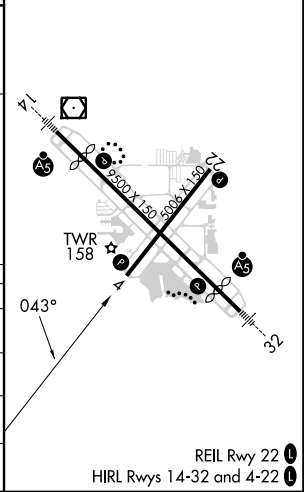


SE-3, 28 NOV 2024 to 26 DEC 2024

SE-3, 28 NOV 2024 to 26 DEC 2024



ELEV 30	<b>D</b> TDZE 23
---------	------------------



CATEGORY	A	B	C	D
LPV DA		317-1	294 (300-1)	
LNAV/VNAV DA		319-1	296 (300-1)	
LNAV MDA	420-1	397 (400-1)	420-1 1/8	397 (400-1 1/8)
CIRCLING	500-1	470 (500-1)	600-1 1/2	600-2
			570 (600-1 1/2)	570 (600-2)