

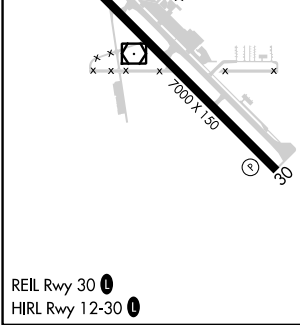
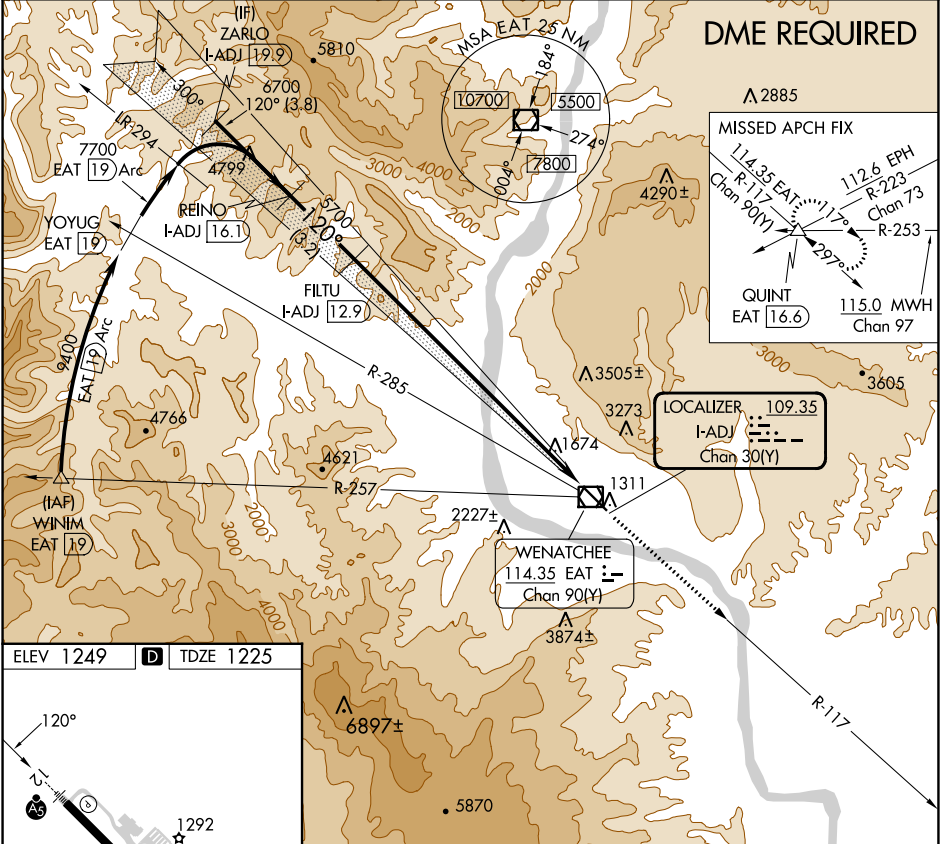
LOC/DME I-ADJ 109.35 Chan 30(Y)	APP CRS 120°	Rwy Idg 7000
		TDZE 1225
		Apt Elev 1249

ILS Y RWY 12

PANGBORN MEML (EAT)

DME required. -7°C	MALSR	MISSED APPROACH: Climb to 2700 then climb to 4000 direct EAT VOR/DME and on EAT VOR/DME R-117 to QUINT INT/EAT 16.6 DME and hold.
-----------------------	-------	---

ASOS 119.925	SEATTLE CENTER 126.1	UNICOM 123.0 (CTAF)
------------------------	--------------------------------	-------------------------------



ELEV 1249	TDZE 1225	<table border="1"> <tr> <td>ZARLO I-ADJ 19.9</td> <td>REINO I-ADJ 16.1</td> <td>FILTU I-ADJ 12.9</td> <td>2700</td> <td>4000</td> <td>EAT </td> <td>EAT R-117</td> <td>QUINT </td> </tr> </table>				ZARLO I-ADJ 19.9	REINO I-ADJ 16.1	FILTU I-ADJ 12.9	2700	4000	EAT	EAT R-117	QUINT
ZARLO I-ADJ 19.9	REINO I-ADJ 16.1	FILTU I-ADJ 12.9	2700	4000	EAT	EAT R-117	QUINT						
<p>7700 → 120° → 6700 → 5700 → 5700</p> <p>GS 3.60° TCH 58</p>		<p>Use I-ADJ DME when on the localizer course.</p>											
		3.8 NM		3.2 NM		11.6 NM							
CATEGORY	A	B	C	D									
S-ILS 12	2433-4		1208 (1200-4)		NA								

NW-1, 28 NOV 2024 to 26 DEC 2024

NW-1, 28 NOV 2024 to 26 DEC 2024