

APP CRS <b>300°</b>	Rwy Idg <b>7000</b>
	TDZE <b>1232</b>
	Apt Elev <b>1249</b>

# RNAV (RNP) Z RWY 30

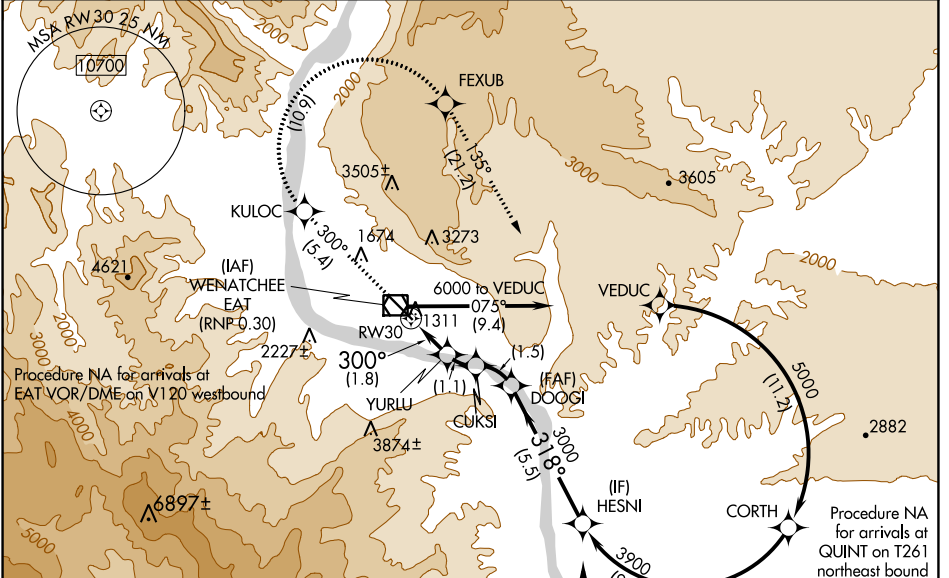
PANGBORN MEML (EAT)

**▽** -7°C For uncompensated Baro-VNAV systems, procedure NA below -10°C (14°F) or above 44°C (111°F). RF required. GPS required. FD or HUD required.

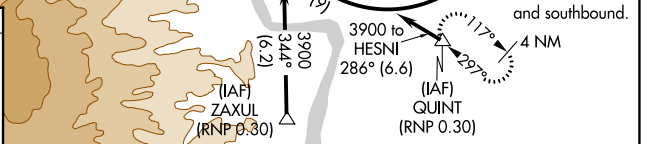
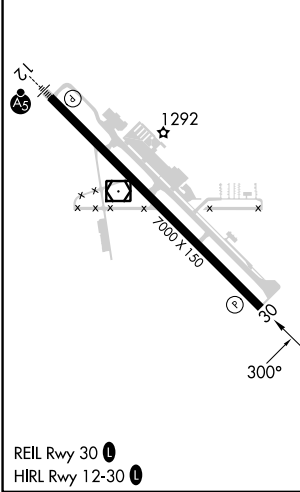
**MISSED APPROACH:** Climb to 6000 on track 300° to KULOC, right turn to FEXUB, and on track 135° to QUINT and hold.

\* Missed approach requires minimum climb of 320 feet per NM to 5500.  
# Missed approach requires minimum climb of 325 feet per NM to 5500.

ASOS <b>119.925</b>	SEATTLE CENTER <b>126.1</b>	UNICOM <b>123.0 (CTAF) 0</b>
------------------------	--------------------------------	---------------------------------



ELEV 1249	<b>D</b>	TDZE 1232
-----------	----------	-----------



6000	KULOC	FEXUB	tr 135°	QUINT	HESNI
tr 300°					
VGSi and RNAV glidepath not coincident (VGSi Angle 4.30/TCH 46).					DOOGI
RW30	YURLU 1979	CUKSI 2411	3000	3000	3900
			318°	3000	GP 3.60° TCH 60
	1.8 NM	1.1 NM	1.5 NM	5.5 NM	

CATEGORY	A	B	C	D
RNP 0.17 DA*		1595-1	363 (400-1)	NA
RNP 0.30 DA#		1686-1 3/8	454 (500-1 3/8)	NA

## AUTHORIZATION REQUIRED

NW-1, 28 NOV 2024 to 26 DEC 2024

NW-1, 28 NOV 2024 to 26 DEC 2024