

(ZARLO2.ZARLO) 21112

ZARLO TWO DEPARTURE (RNAV)

AL-641 (FAA)

PANGBORN MEML (EAT)
WENATCHEE, WASHINGTON

NW-1, 28 NOV 2024 to 26 DEC 2024

DEPARTURE ROUTE DESCRIPTION

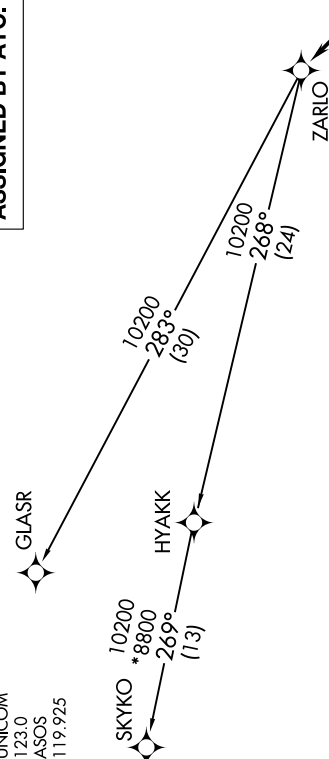
TAKEOFF RUNWAY 12: Climb heading 120° to 3700, then left turn direct PREBE, thence . . .
TAKEOFF RUNWAY 30: Climb heading 300° to 1750, then direct PREBE, thence . . .

. . . on track 300° to cross UBIYO at or above 6700, then on depicted route to ZARLO, then on transition. Expect filed altitude 10 minutes after departure.

GLASR TRANSITION [ZARLO2.GLASR]
SKYKO TRANSITION [ZARLO2.SKYKO]

TOP ALTITUDE: ASSIGNED BY ATC.

SEATTLE CENTER
126.1
UNICOM
123.0
ASOS
119.925



TAKEOFF MINIMUMS

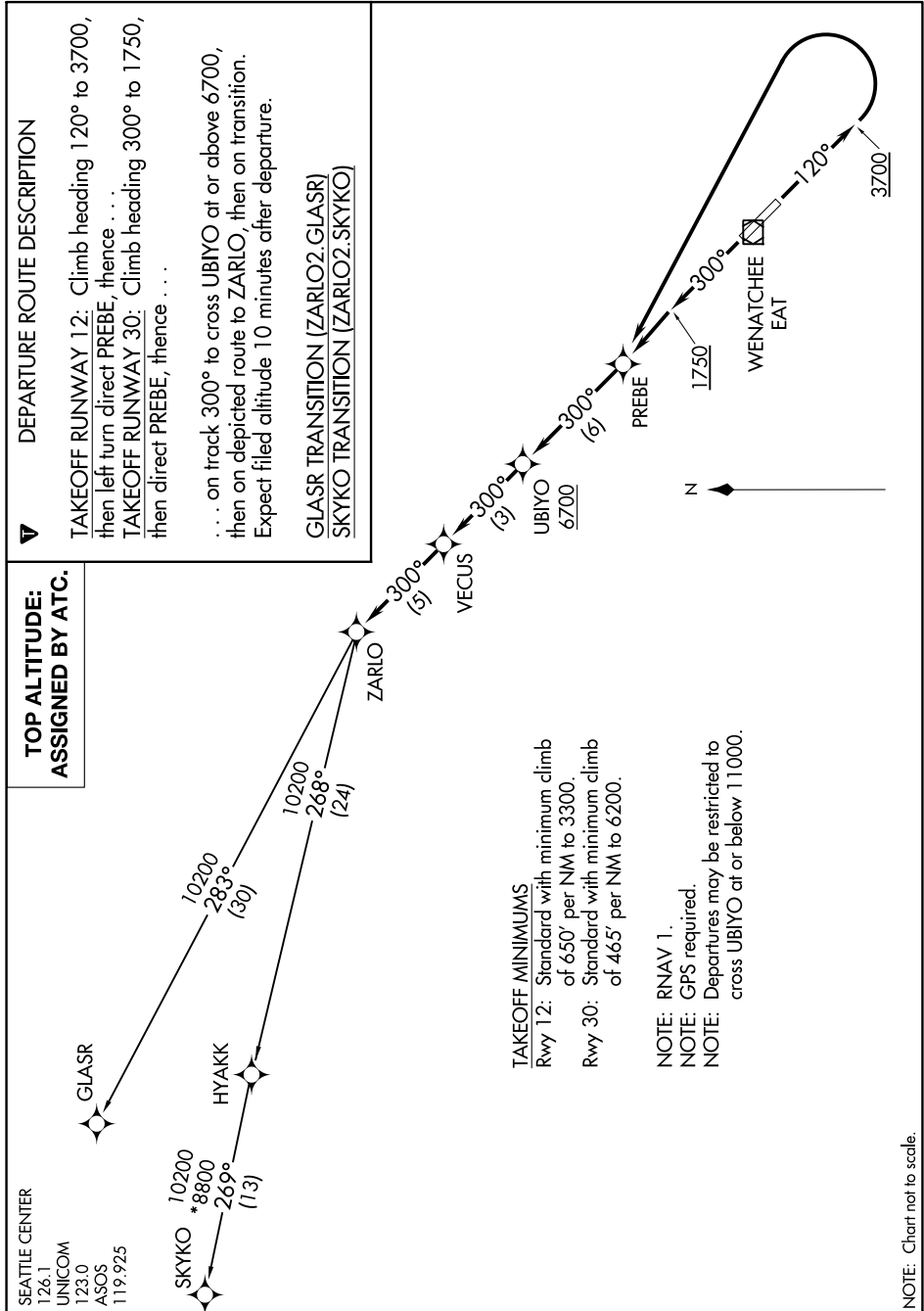
Rwy 12: Standard with minimum climb of 650' per NM to 3300.
Rwy 30: Standard with minimum climb of 465' per NM to 6200.

NOTE: RNAV 1.
NOTE: GPS required.
NOTE: Departures may be restricted to cross UBIYO at or below 11000.

ZARLO TWO DEPARTURE (RNAV)

(ZARLO2.ZARLO) 10NOV16

PANGBORN MEML (EAT)
WENATCHEE, WASHINGTON



NOTE: Chart not to scale.

NW-1, 28 NOV 2024 to 26 DEC 2024