


LOC I-MOD <b>111.9</b>	APP CRS <b>288°</b>	Rwy Idg TDZE Apt Elev	<b>5904</b> <b>91</b> <b>99</b>
---------------------------	------------------------	-----------------------------	---------------------------------------

# ILS or LOC RWY 28R

MODESTO CITY-COUNTY-HARRY SHAM FLD (MOD)

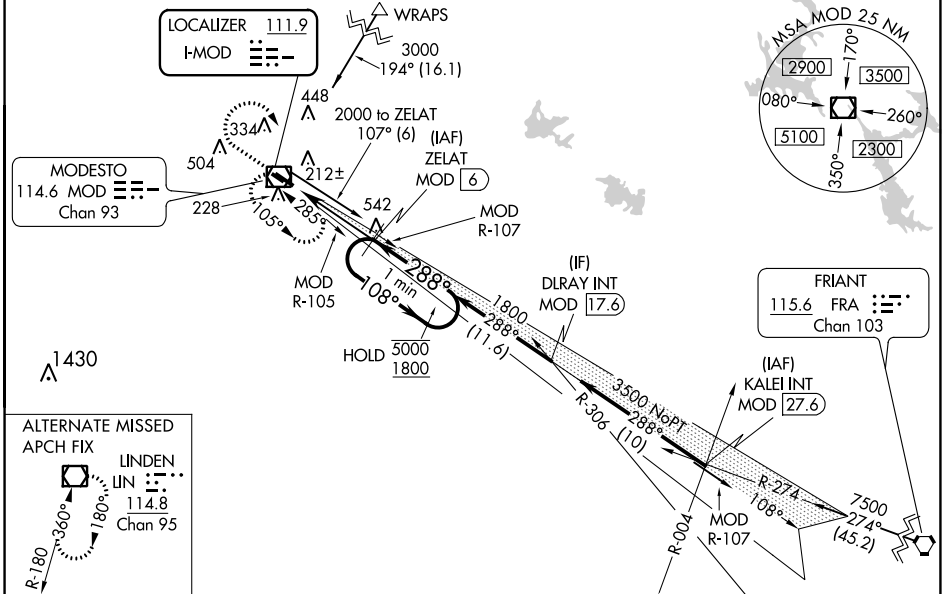
DME required for LOC only.

**Autopilot coupled approach NA below 1080. DME from MOD VOR/DME. Simultaneous reception of I-MOD and MOD DME required. For inop ALS, increase S-LOC 28R Cat C/D visibility to 1 3/8 SM.**

MALSR 

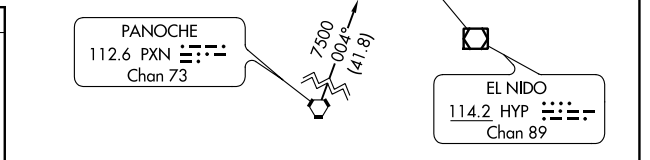
MISSED APPROACH: Climb to 1500 then climbing right turn to 2000 direct MOD VOR/DME and hold.

ATIS <b>127.7</b>	NORCAL APP CON <b>120.95 269.45</b>	MODESTO TOWER* <b>125.3 (CTAF) 257.8</b>	GND CON <b>121.7</b>	UNICOM <b>122.95</b>
----------------------	--	---	-------------------------	-------------------------



ELEV 99	<b>D</b>	TDZE 91
---------	----------	---------

Diagram details: 156 TWR 191; 5904 x 150 -0.3% UP; 288° 5.2 NM from FAF; 2000 x 100 -0.4% UP; 136±; 28R; REIL Rwy 10L; MIRL Rwy 10R-28L; HIRL Rwy 10L-28R.



1500	2000	MOD	ZELAT MOD 6	One Minute Holding Pattern
* LOC only		MOD 0.8	* MOD 2.2	
		1800		5000
		108°		1800
		288°		GS 3.00° TCH 53
		1.4 NM		3.8 NM
CATEGORY	A	B	C	D
S-ILS 28R	291-1/2		200 (200-1/2)	
S-LOC 28R	580-1/2	489 (500-1/2)	580-1	489 (500-1)
<b>C</b> CIRCLING	580-1	600-1	700-1 3/4	820-2 1/4
	481 (500-1)	501 (600-1)	601 (700-1 3/4)	721 (800-2 1/4)

SW-2, 28 NOV 2024 to 26 DEC 2024

SW-2, 28 NOV 2024 to 26 DEC 2024