

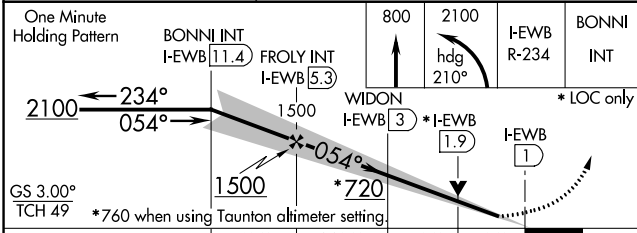
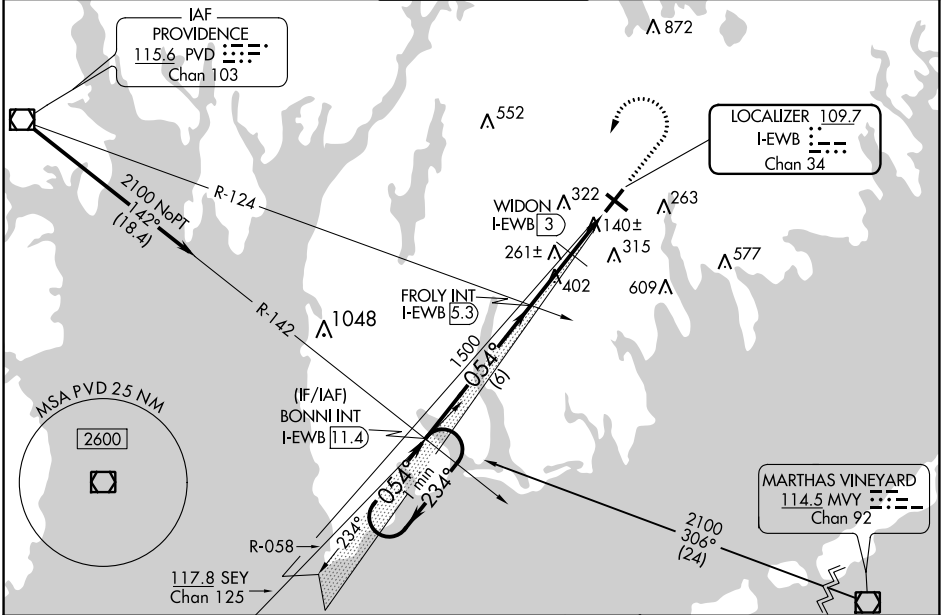
LOC/DME I-EWB 109.7 Chan 34	APP CRS 054°	Rwy Idg TDZE Apt Elev	5400 70 79
--	------------------------	-----------------------------	---------------------------------------

ILS or LOC RWY 5
NEW BEDFORD RGNL (E-WB)

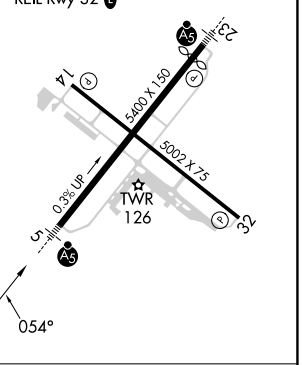
⚠ AutoPilot coupled approach NA below 470. DME required. VDP NA with Taunton altimeter setting. When local altimeter setting not received, use Taunton altimeter setting and increase all DA 34 feet and all MDA 40 feet; increase S-LOC 5 Cats C and D and Circling Cat C visibility 1/8 SM; increase WIDON fix minimums Circling Cat C visibility 1/4 SM. For inop MALSRL, increase WIDON fix minimums S-LOC 5 Cat C/D visibility 1/4 mile. #RVR 1800 authorized with use of FD or AP or HUD to DA.

MALSRL
MISSED APPROACH: Climb to 800 then climbing left turn to 2100 on heading 210° and on I-EWB localizer SW course R-234 to BONNI INT/I-EWB 11.4 DME and hold.

ATIS 126.85	PROVIDENCE APP CON* 128.7 269.525	NEW BEDFORD TOWER* 118.1 (CTAF) 239.0	GND CON 121.9	UNICOM 122.95
-----------------------	---	---	-------------------------	-------------------------



ELEV 79	TDZE 70
MIRL Rwy 14-32	HIRL Rwy 5-23
REIL Rwy 32	



CATEGORY	A	B	C	D
S-ILS 5 #	270/24 200 (200-1/2)			
S-LOC 5	720/24	650 (700-1/2)	720-1 3/8	650 (700-1 3/8)
C CIRCLING	720-1	641 (700-1)	720-1 7/8	960-3
WIDON FIX MINIMUMS				
S-LOC 5	420/24	350 (400-1/2)	420/30	350 (400-5/8)
C CIRCLING	600-1	640-1	720-1 3/4	960-3
	521 (600-1)	561 (600-1)	641 (700-1 3/4)	881 (900-3)

FAF to MAP 4.4 NM					
Knots	60	90	120	150	180
Min:Sec	4:24	2:56	2:12	1:46	1:28

NE-1, 28 NOV 2024 to 26 DEC 2024

NE-1, 28 NOV 2024 to 26 DEC 2024