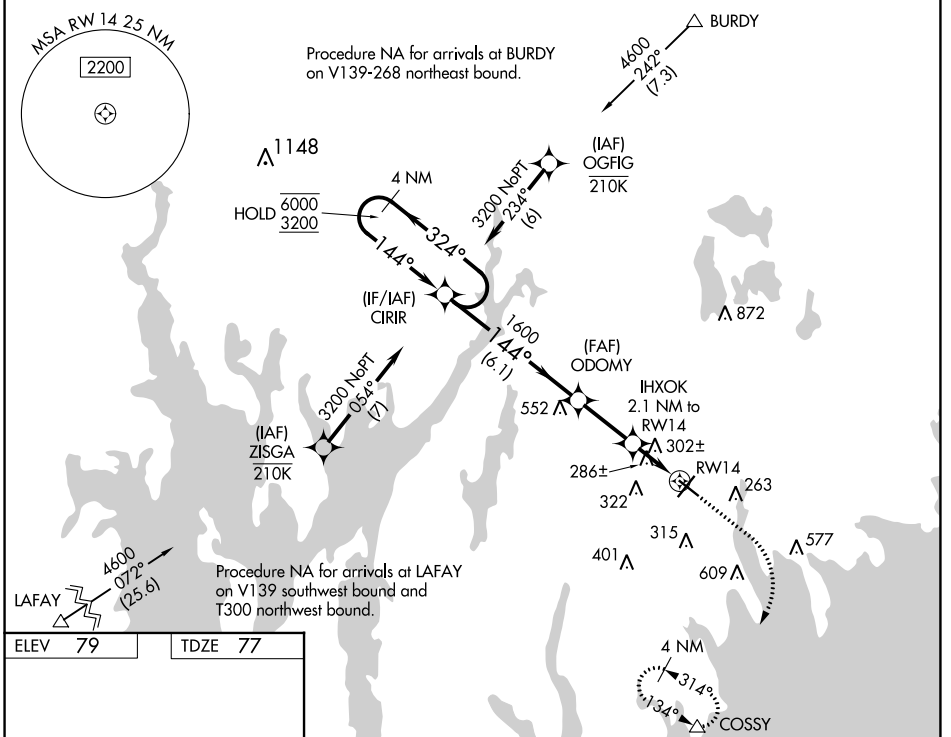


|  |                        |   |             |
|--|------------------------|---|-------------|
| WAAS<br>CH <b>62927</b><br><b>W14A</b> | APP CRS<br><b>144°</b> | Rwy Idg<br>TDZE <b>77</b><br>Apt Elev <b>79</b> | <b>5002</b> |
|--|------------------------|---|-------------|

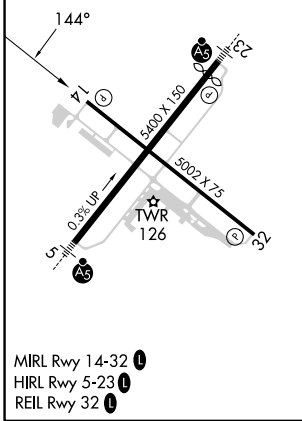
# RNAV (GPS) RWY 14

NEW BEDFORD RGNL (E/WB)

|                       |   |   |                         |                         |
|-----------------------|---|---|-------------------------|-------------------------|
| RNP APCH - GPS.       |   | <p>▼ Rwy 14 helicopter visibility reduction below 1 SM NA. Procedure NA at night. When local altimeter setting not received, use Taunton altimeter setting and increase all MDA 40 feet, and LNAV visibility Cat C ½ SM, and Circling visibility Cat C ¼ SM.</p> <p>▲ MISSED APPROACH: Climb to 600 then climbing right turn to 3000 direct COSSY and hold.</p> |                         |                         |
| ATIS<br><b>126.85</b> | PROVIDENCE APP CON*<br><b>128.7 269.525</b> | NEW BEDFORD TOWER*<br><b>118.1 (CTAF) 0 239.0</b>   | GND CON<br><b>121.9</b> | UNICOM<br><b>122.95</b> |



|         |         |
|---------|---------|
| ELEV 79 | TDZE 77 |
|---------|---------|



|                   |                      |                      |                              |     |        |        |
|-------------------|----------------------|----------------------|------------------------------|-----|--------|--------|
|                   | 4 NM Holding Pattern | CIRIR                | Visual Segment - Obstacles.  | 600 | 3000   | COSSY  |
|                   | 6000 ← 324°          | 3200 → 144°          | 1600                         | 780 |        | RWY 14 |
|                   | 6.1 NM               |                      | 2.5 NM                       |     | 2.1 NM |        |
| CATEGORY          | A                    | B                    | C                            | D   |        |        |
| LP MDA            | 540-1                | 463 (500-1)          | 540-1 3/8<br>463 (500-1 3/8) | NA  |        |        |
| LNAV MDA          | 560-1                | 483 (500-1)          | 560-1 3/8<br>483 (500-1 3/8) | NA  |        |        |
| <b>C</b> CIRCLING | 620-1<br>541 (600-1) | 640-1<br>561 (600-1) | 720-1 3/4<br>641 (700-1 3/4) | NA  |        |        |

NE-1, 28 NOV 2024 to 26 DEC 2024

NE-1, 28 NOV 2024 to 26 DEC 2024