

WAAS CH 65638 W23A	APP CRS 235°	Rwy Idg TDZE Apt Elev	5000 78 79
--	------------------------	-----------------------------	---------------------------------------

RNAV (GPS) RWY 23

NEW BEDFORD RGNL (E/WB)

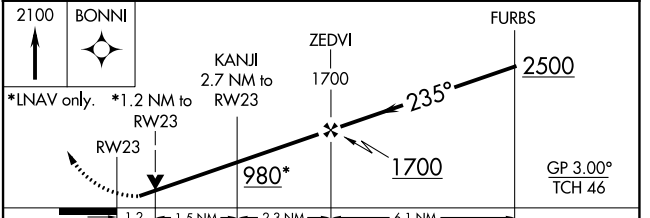
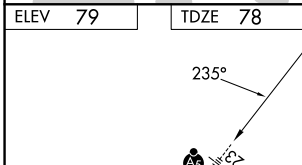
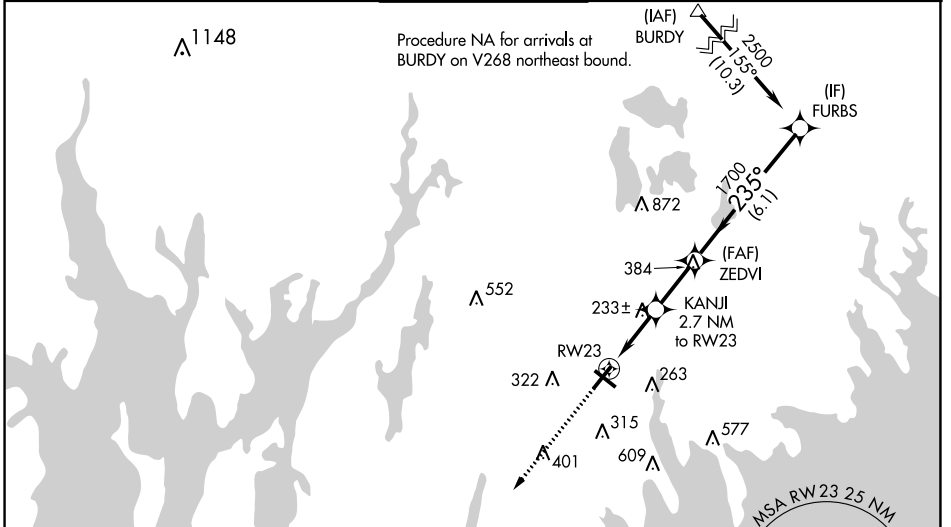
RNP APCH-GPS.

Baro-VNAV and VDP NA when using Taunton altimeter setting. For uncompensated Baro-VNAV systems, LNAV/VNAV NA below -16°C or above 54°C. Helicopter visibility reduction below ¾ SM NA. When local altimeter setting not received, use Taunton altimeter setting and increase LPV DA to 393 feet, increase LNAV/VNAV DA to 412 feet; increase all MDA 40 feet and LNAV Cats C and D and Circling Cat C visibility ¼ SM. For inop MALSRL, increase LPV all Cats visibility ½ mile, LNAV/VNAV and LNAV Cat A/B visibility ¼ mile. For inop MALSRL when using Taunton altimeter setting, increase LNAV/VNAV all Cats visibility ⅓ mile, LNAV Cat A/B visibility ¼ mile and Cat C/D visibility ⅓ mile.

MALSRL

MISSED APPROACH:
Climb to 2100 direct BONNI and hold.

ATIS 126.85	PROVIDENCE APP CON* 128.7 269.525	NEW BEDFORD TOWER* 118.1 (CTAF) 239.0	GND CON 121.9	UNICOM 122.95
-----------------------	---	---	-------------------------	-------------------------



ELEV 79 TDZE 78

MIRL Rwy 14-32
HIRL Rwy 5-23
REIL Rwy 32

CATEGORY	A	B	C	D
LPV DA		359-¾	281 (300-¾)	
LNAV/VNAV DA		378-¾	300 (300-¾)	
LNAV MDA		500-¾	422 (500-¾)	
CIRCLING	620-1	640-1	720-1¾	960-3
	541 (600-1)	561 (600-1)	641 (700-1¾)	881 (900-3)

NE-1, 28 NOV 2024 to 26 DEC 2024

NE-1, 28 NOV 2024 to 26 DEC 2024