

OLYMPIA, WASHINGTON

AL-645 (FAA)

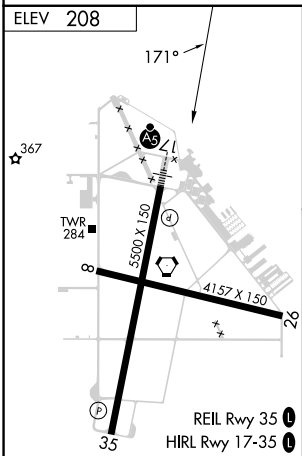
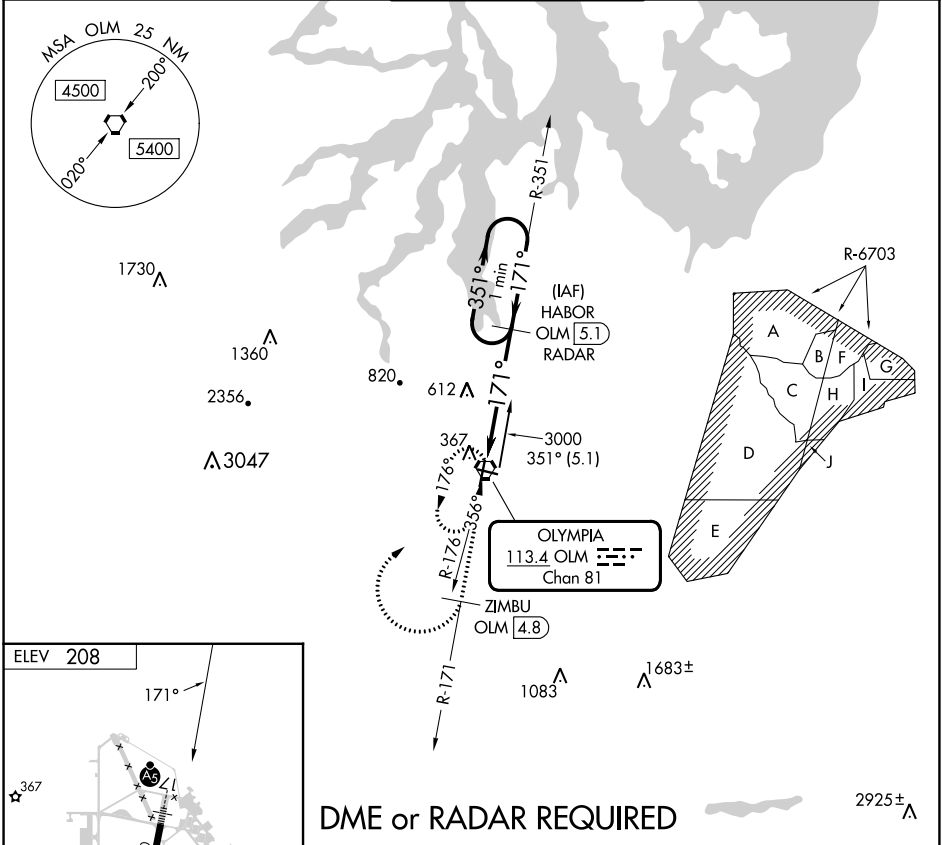
23334

VORTAC OLM 113.4 Chan 81	APP CRS 171°	Rwy Idg TDZE Apt Elev	N/A N/A 208
---------------------------------------	------------------------	-----------------------------	--

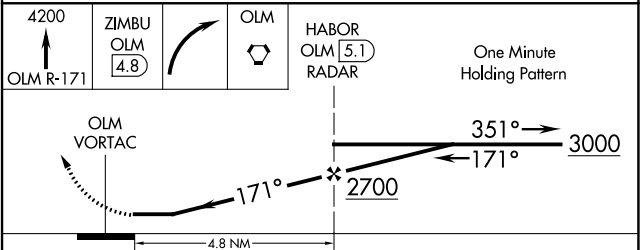
VOR-A
OLYMPIA RGNL (OLM)

MISSED APPROACH: Climb to 4200 on OLM VORTAC R-171 to ZIMBU/OLM 4.8 DME and climbing right turn direct OLM VORTAC and hold, continue climb-in-hold to 4200.

ATIS★ 135.725	SEATTLE APP CON 121.1 290.9	OLYMPIA TOWER★ 124.4 (CTAF) 254.25	GND CON 121.6	UNICOM 122.95
-------------------------	---------------------------------------	--	-------------------------	-------------------------



DME or RADAR REQUIRED



FAF to MAP 4.8 NM					
Knots	60	90	120	150	180
Min:Sec	4:48	3:12	2:24	1:55	1:36

CATEGORY	A	B	C	D
<input checked="" type="checkbox"/> CIRCLING	880-1 672 (700-1)		1020-2½ 812 (900-2½)	1020-2¾ 812 (900-2¾)

OLYMPIA, WASHINGTON
Amdt 2 03JAN19

46°58'N-122°54'W

OLYMPIA RGNL (OLM)
VOR-A

NW-1, 28 NOV 2024 to 26 DEC 2024

NW-1, 28 NOV 2024 to 26 DEC 2024