

# RNAV (GPS) RWY 21

MID-OHIO VALLEY RGNL (PKB)

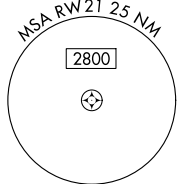
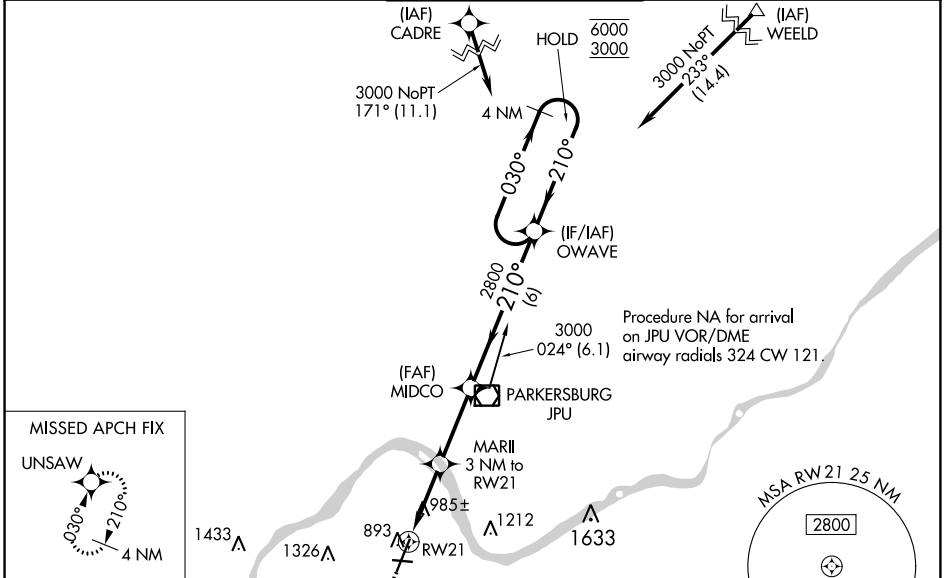
|  |                        |                             |   |
|--|------------------------|-----------------------------|---|
| WAAS<br>CH <b>86727</b><br><b>W21A</b> | APP CRS<br><b>210°</b> | Rwy Idg<br>TDZE<br>Apt Elev | <b>6780</b><br><b>857</b><br><b>859</b> |
|--|------------------------|-----------------------------|---|

RNP APCH.

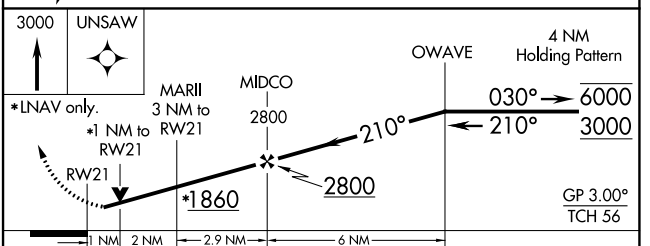
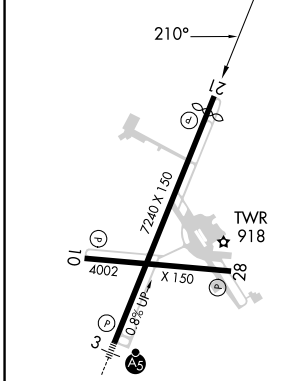
Baro-VNAV and VDP NA when using Athens/Albany altimeter setting. Rwy 21 helicopter visibility reduction below 3/4 SM NA. For uncompensated Baro-VNAV systems, procedure NA below -17°C or above 38°C. When local altimeter setting not received, use Athens/Albany altimeter setting: increase LPV DA to 1249 feet and visibility all Cats 1/2 SM; increase LNAV/VNAV DA to 1237 feet and visibility all Cats 1/2 SM; increase all MDAs 100 feet and visibility Cat C/D 1/2 SM. Circling Rwy 10, 28 NA at night.

MISSED APPROACH:  
Climb to 3000 direct  
UNSAW and hold.

|                       |  |  |                          |                         |
|-----------------------|--|--|--------------------------|-------------------------|
| ATIS<br><b>124.35</b> | INDIANAPOLIS CENTER<br><b>125.55 317.475</b> | PARKERSBURG TOWER *<br><b>123.7 (CTAF) 0 257.8</b> | GND CON<br><b>126.45</b> | UNICOM<br><b>122.95</b> |
|-----------------------|--|--|--------------------------|-------------------------|



|          |          |          |
|----------|----------|----------|
| ELEV 859 | <b>D</b> | TDZE 857 |
|----------|----------|----------|



| CATEGORY     | A                     | B                     | C                             | D                             |
|--------------|-----------------------|-----------------------|-------------------------------|-------------------------------|
| LPV DA       |                       | 1149-7/8              | 292 (300-7/8)                 |                               |
| LNAV/VNAV DA |                       | 1137-7/8              | 280 (300-7/8)                 |                               |
| LNAV MDA     | 1240-1                | 383 (400-1)           | 1240-1 1/2                    | 383 (400-1 1/2)               |
| CIRCLING     | 1320-1<br>461 (500-1) | 1380-1<br>521 (600-1) | 1640-2 1/4<br>781 (800-2 1/4) | 1640-2 1/2<br>781 (800-2 1/2) |

REIL Rwy 28  
REIL Rwy 10, 21  
HIRL Rwy 3-21 and 10-28

NE-4, 28 NOV 2024 to 26 DEC 2024

NE-4, 28 NOV 2024 to 26 DEC 2024