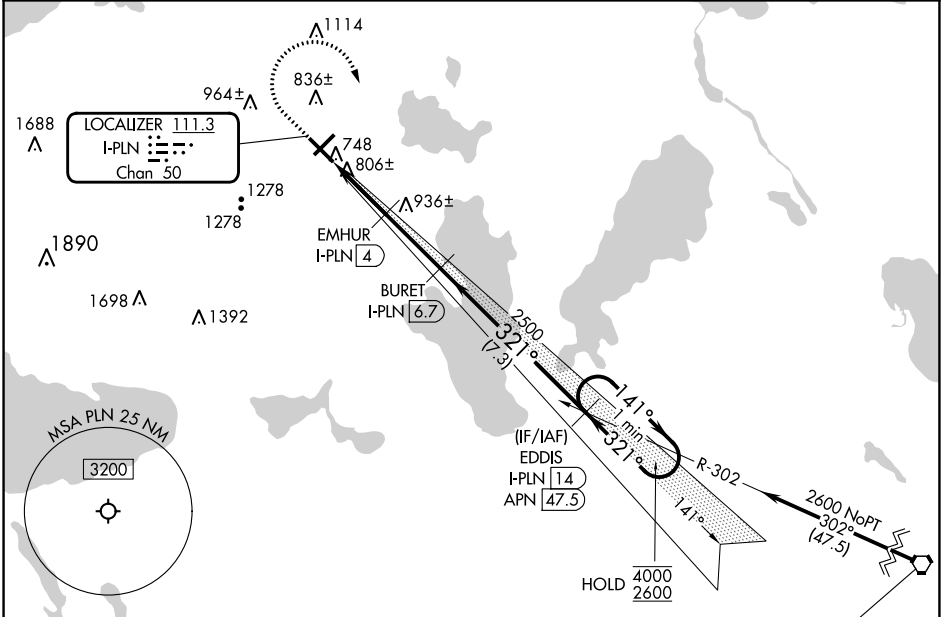


LOC/DME I-PLN <b>111.3</b> Chan <b>50</b>	APP CRS <b>321°</b>	Rwy Idg <b>6513</b> TDZE <b>712</b> Apt Elev <b>721</b>
---	------------------------	---

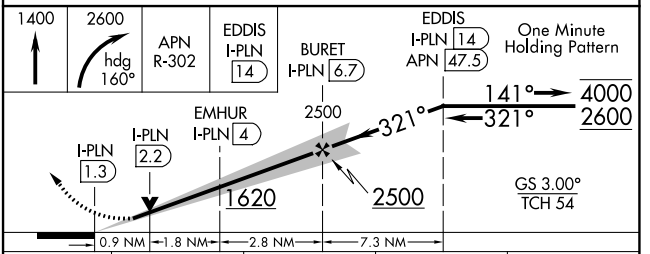
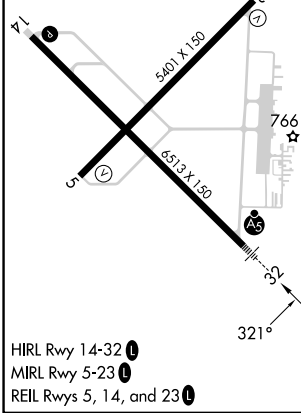
# ILS or LOC RWY 32

PELLSTON RGNL/EMMET COUNTY (PLN)

DME required.	MALSR AS	MISSED APPROACH: Climb to 1400 then climbing right turn to 2600 on heading 160° and APN VORTAC R-302 to EDDIS/I-PLN 14 DME and hold.
ASOS <b>119.025</b>	MINNEAPOLIS CENTER <b>134.6 354.05</b>	UNICOM <b>123.0 (CTAF) 0</b>



ELEV 721	<b>D</b>	TDZE 712
----------	----------	----------



CATEGORY	A	B	C	D
S-ILS 32	912-1/2		200 (200-1/2)	
S-LOC 32	1060-1/2	348 (400-1/2)	1060-5/8	348 (400-5/8)
CIRCLING	1280-1 559 (600-1)	1320-1 599 (600-1)	1560-2 1/2 839 (900-2 1/2)	1660-3 939 (1000-3)

EC-1, 28 NOV 2024 to 26 DEC 2024

EC-1, 28 NOV 2024 to 26 DEC 2024