

WAAS CH 77813 W32A	APP CRS 321°	Rwy Idg 6513 TDZE 712 Apt Elev 721
--	------------------------	---

RNAV (GPS) RWY 32

PELLSTON RGNL/EMMET COUNTY (PLN)

RNP APCH - GPS.

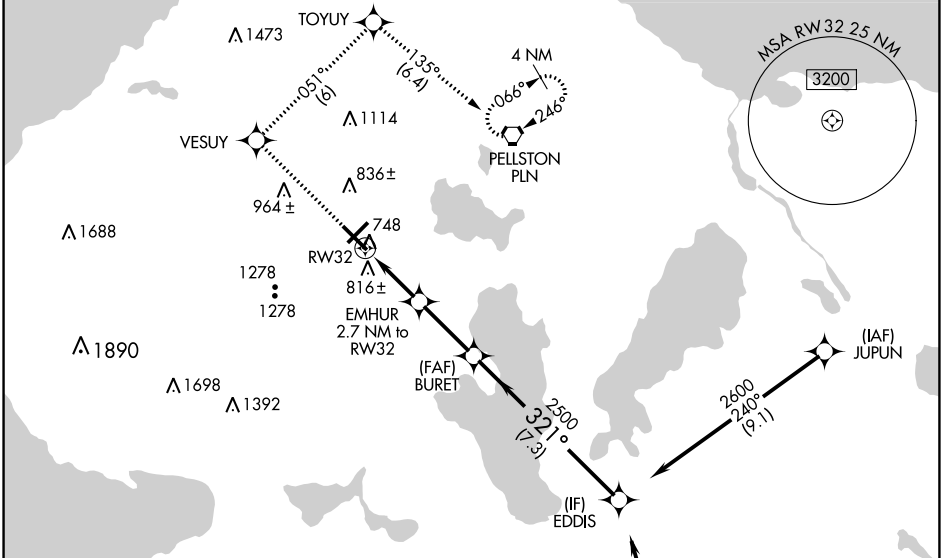
⚠ Circling Rwy 5, 14 NA at night. Baro-VNAV and VDP NA when using MGN altimeter setting.
⚠ For uncompensated Baro-VNAV systems, LNAV/VNAV NA below -20°C or above 54°C.
 For inop ALS, increase LNAV/VNAV all Cats and LNAV Cat C/D visibility to 1 SM. For inop ALS when using MGN altimeter setting, increase LNAV/VNAV all Cats visibility to 1 SM and LNAV Cat C/D visibility to 1½ SM. When local altimeter setting not received, use MGN altimeter setting and increase LPV DA to 942 feet; increase LNAV/VNAV DA to 1086 feet; increase all MDAs 40 feet and LNAV visibility Cat C/D ½ SM.

MALSR



MISSED APPROACH:
 Climb to 2600 direct VESUY and on track 051° to TOYUY and on track 135° to PLN
 VORTAC and hold. (Do not exceed 200K until TOYUY).

ASOS 119.025	MINNEAPOLIS CENTER 134.6 354.05	UNICOM 123.0 (CTAF) 0
------------------------	---	---------------------------------

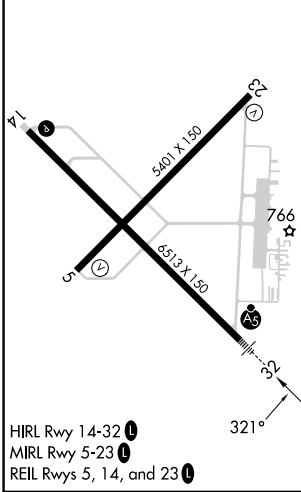


EC-1, 28 NOV 2024 to 26 DEC 2024

EC-1, 28 NOV 2024 to 26 DEC 2024

ELEV 721	D	TDZE 712
----------	----------	----------

Procedure NA for arrivals at RONDO on V609 southbound.



2600	VESUY	tr 051°	TOYUY	tr 135°	PLN	BURET	EDDIS
						2500	2600
						1620	2500
						GP 3.00°	TCH 54
						1 NM	1.7 NM
						2.8 NM	7.3 NM
CATEGORY	A		B		C		D
LPV DA			912-½		200 (200-½)		
LNAV/VNAV DA			1056-⅝		344 (400-⅝)		
LNAV MDA	1080-½		368 (400-½)		1080-⅝		368 (400-⅝)
CIRCLING	1280-1 559 (600-1)		1320-1 599 (600-1)		1560-2½ 839 (900-2½)		1660-3 939 (1000-3)