

VORTAC PLN	APP CRS	Rwy Idg	5395
111.8	245°	TDZE	721
Chan 55		Apt Elev	721

VOR RWY 23

PELLSTON RGNL/EMMET COUNTY (PLN)

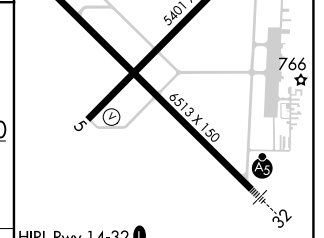
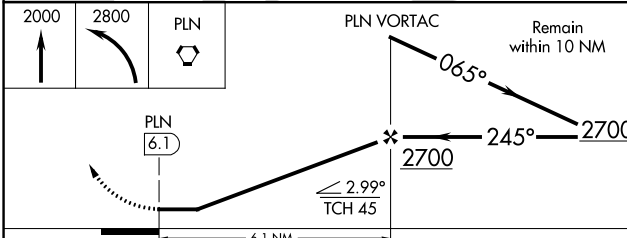
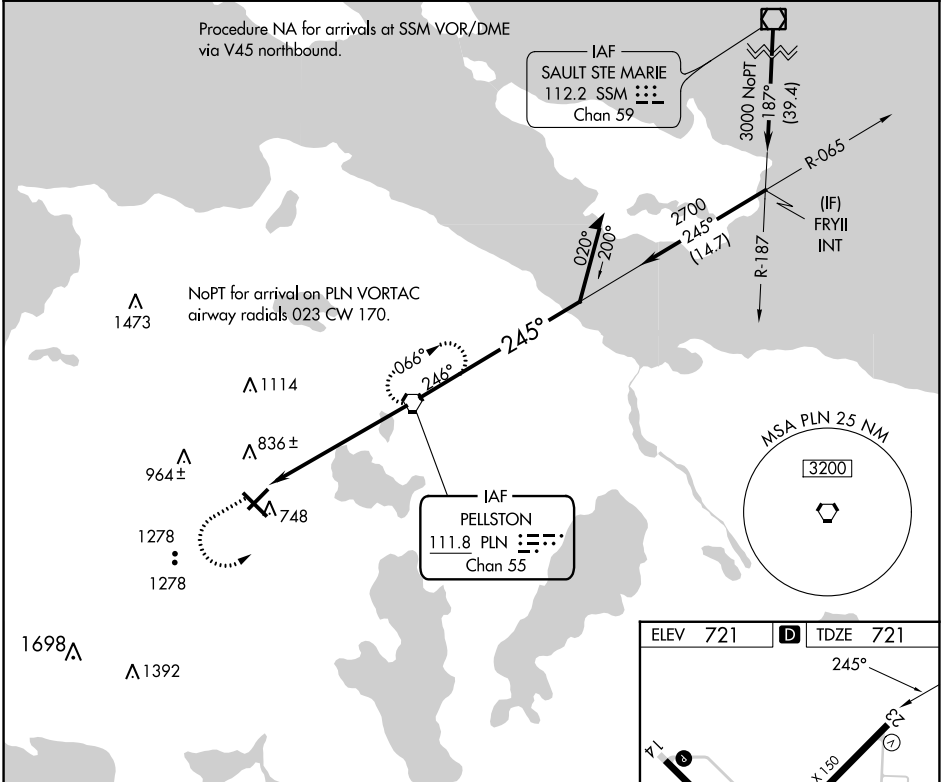
⚠ When local altimeter setting not received, use Harbor Springs altimeter setting: increase all MDA 40 feet and visibility S-23 Cat C and D ¼ SM.
⚠ Rwy 23 helicopter visibility reduction below 1 SM NA.
 Straight-in Rwy 23 NA at night, Circling Rwy 5, 14, 23 NA at night.

MISSED APPROACH: Climb to 2000 then climbing left turn to 2800 direct PLN VORTAC and hold.

ASOS
119.025

MINNEAPOLIS CENTER
134.6 354.05

UNICOM
123.0 (CTAF) 0



CATEGORY	A	B	C	D
S-23	1300-1	579 (600-1)	1300-1½ 579 (600-1½)	1300-1¾ 579 (600-1¾)
CIRCLING	1300-1 579 (600-1)	1320-1 599 (600-1)	1560-2½ 839 (900-2½)	1660-3 939 (1000-3)

HIRL Rwy 14-32	0
MIRL Rwy 5-23	0
REL Rwys 5, 14, and 23	0
FAF to MAP 6.1 NM	
Knots	60 90 120 150 180
Min:Sec	6:06 4:04 3:03 2:26 2:02

EC-1, 28 NOV 2024 to 26 DEC 2024

EC-1, 28 NOV 2024 to 26 DEC 2024