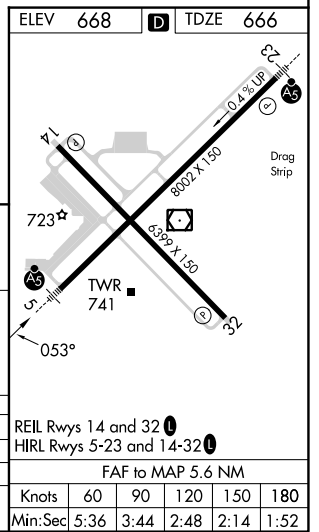
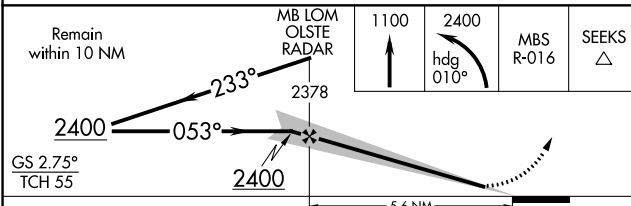
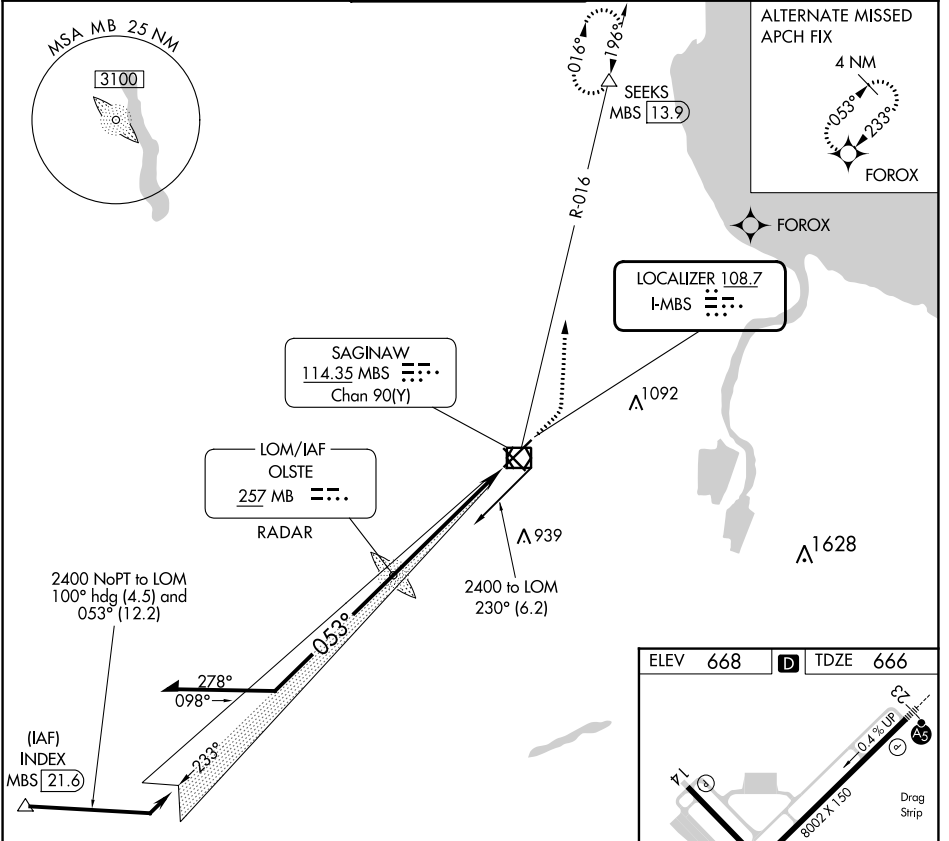


LOC I-MBS 108.7	APP CRS 053°	Rwy Idg 8002
		TDZE 666
		Apt Elev 668

ILS or LOC RWY 5

MBS INTL (MBS)

DME required.		MALSR	MISSED APPROACH: Climb to 1100 then climbing left turn to 2400 on heading 010° and MBS VOR/DME R-016 to SEEKS/MBS 13.9 DME and hold.		
* RVR 1800 authorized with use of FD or AP or HUD to DA.			ATIS 125.925	GREAT LAKES APP CON * 126.45 235.625	SAGINAW TOWER * 120.1 (CTAF) 257.7
			GND CON 121.7	CLNC DEL 121.85	UNICOM 122.95



CATEGORY	A	B	C	D
S-ILS 5 *	866/24			
S-LOC 5	1100/24	434 (500-1/2)	1100/40	434 (500-3/4)
CIRCLING	1100-1 432 (500-1)	1120-1 452 (500-1)	1240-1 1/2 572 (600-1 1/2)	1240-2 572 (600-2)

REIL Rwy 14 and 32				
HIRL Rwy 5-23 and 14-32				
FAF to MAP 5.6 NM				
Knots	60	90	120	150
Min:Sec	5:36	3:44	2:48	2:14

EC-1, 28 NOV 2024 to 26 DEC 2024

EC-1, 28 NOV 2024 to 26 DEC 2024