

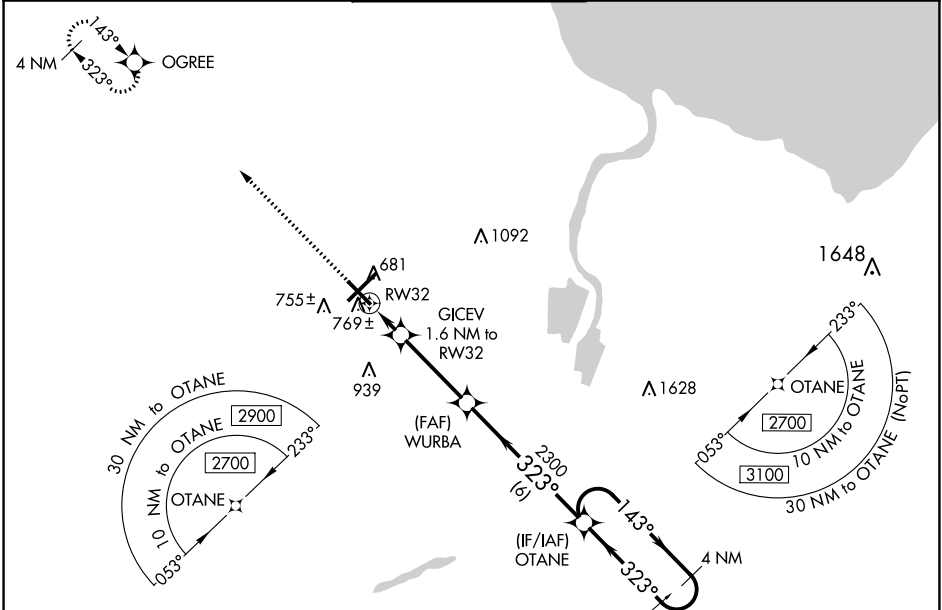
WAAS CH <b>78011</b> W32A	APP CRS <b>323°</b>	Rwy Idg TDZE Apt Elev	<b>6399</b> <b>665</b> <b>668</b>
---------------------------------	------------------------	-----------------------------	---

# RNAV (GPS) RWY 32

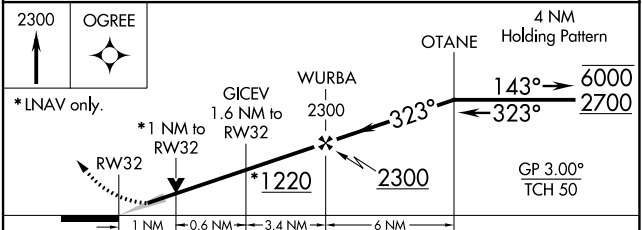
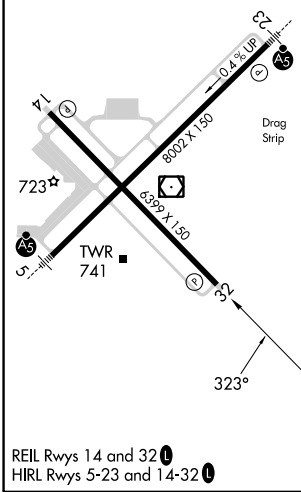
MBS INTL (MBS)

RNP APCH.		MISSED APPROACH: Climb to 2300 direct OGREE and hold.			
For uncompensated Baro-VNAV systems, LNAV/VNAV NA below -18°C or above 54°C.					

ATIS <b>125.925</b>	GREAT LAKES APP CON * <b>126.45 235.625</b>	SAGINAW TOWER * <b>120.1 (CTAF) 0 257.7</b>	GND CON <b>121.7</b>	CLNC DEL <b>121.85</b>	UNICOM <b>122.95</b>
------------------------	--	--	-------------------------	---------------------------	-------------------------



ELEV 668	<b>D</b>	TDZE 665
----------	----------	----------



CATEGORY	A	B	C	D
LPV DA		865- <sup>3</sup> / <sub>4</sub>	200 (200- <sup>3</sup> / <sub>4</sub> )	
LNAV/VNAV DA		950- <sup>7</sup> / <sub>8</sub>	285 (300- <sup>7</sup> / <sub>8</sub> )	
LNAV MDA		1020-1	355 (400-1)	
<b>C</b> CIRCLING	1080-1 412 (500-1)	1120-1 452 (500-1)	1240-1½ 572 (600-1½)	1240-2 572 (600-2)

EC-1, 28 NOV 2024 to 26 DEC 2024

EC-1, 28 NOV 2024 to 26 DEC 2024