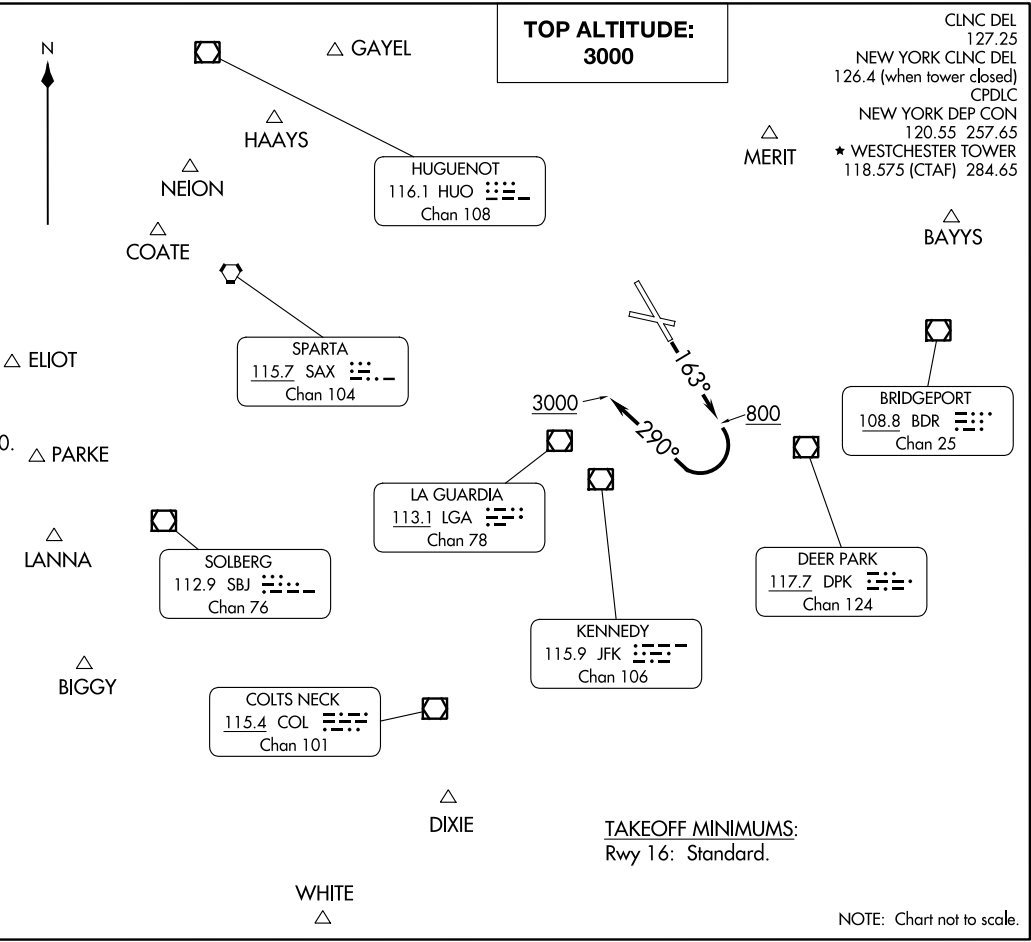


PROP ONE DEPARTURE  
(PROPI, PROP) 22JUN17  
WHITE PLAINS, NEW YORK  
WESTCHESTER COUNTY (HPN)

- NOTE: RADAR required.
- NOTE: BIGGY departures expect vectors to SBJ/SBJ R-237.
- NOTE: COATE departures expect vectors to SAX VORTAC or SAX R-311.
- NOTE: ELIOT departures expect vectors to SAX R-252.
- NOTE: GAYEL departures expect vectors to DPK R-320.
- NOTE: LANNA departures expect vectors to PTW R-059.
- NOTE: MERIT departures expect vectors to LGA R-055.
- NOTE: NEION departures expect vectors to LGA R-322.
- NOTE: PARKE departures expect vectors to BWZ/BWZ R-250.
- NOTE: WHITE departures expect vectors to COL VOR/DME or COL R-204.
- NOTE: DIXIE departures expect vectors to JFK VOR/DME.
- NOTE: HAAYS departures expect vectors to HUO R-145.
- NOTE: BAYYS departures expect vectors to BDR VOR/DME or BDR R-054.



(PROPI, PROP) 23334  
AL-651 (FAA)  
WESTCHESTER COUNTY (HPN)  
WHITE PLAINS, NEW YORK

# PROP ONE DEPARTURE



## DEPARTURE ROUTE DESCRIPTION

\*TAKEOFF RUNWAY 16: Climb heading 163° to 800, then climbing right turn to 3000 on heading 290°, thence. . . .

. . . . on vectors to assigned route/fix. Maintain 3000. Expect clearance to filed altitude within 10 minutes after departure.

\* NOTE: Do not exceed 190K until established on heading 290°.

NE-2, 28 NOV 2024 to 26 DEC 2024

NE-2, 28 NOV 2024 to 26 DEC 2024