

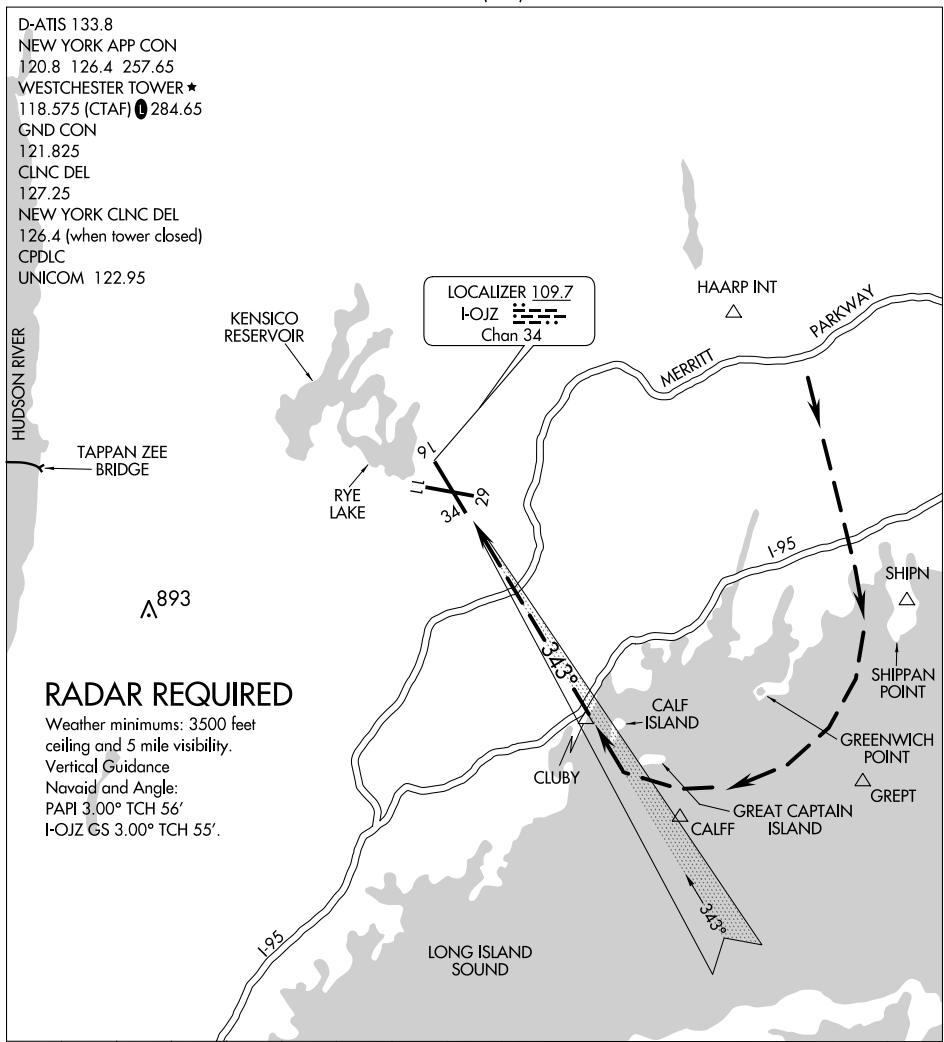
SOUND VISUAL RWY 34

AL-651 (FAA)

WESTCHESTER COUNTY (HPN)
WHITE PLAINS, NEW YORK

D-ATIS 133.8
 NEW YORK APP CON
 120.8 126.4 257.65
 WESTCHESTER TOWER ★
 118.575 (CTAF) 284.65
 GND CON
 121.825
 CLNC DEL
 127.25
 NEW YORK CLNC DEL
 126.4 (when tower closed)
 CPDLC
 UNICOM 122.95

LOCALIZER 109.7
 I-OJZ
 Chan 34



NE-2, 28 NOV 2024 to 26 DEC 2024

NE-2, 28 NOV 2024 to 26 DEC 2024

RADAR REQUIRED

Weather minimums: 3500 feet ceiling and 5 mile visibility.
 Vertical Guidance
 Navaid and Angle:
 PAPI 3.00° TCH 56'
 I-OJZ GS 3.00° TCH 55'.

SOUND VISUAL RWY 34

When cleared for a Sound Visual Approach RWY 34, maintain 3000 feet until south of the shoreline on base leg (2000 feet when authorized by ATC).

Fly depicted track to remain offshore of Greenwich Point.

SOUND VISUAL RWY 34

41°04'N-73°42'W

WHITE PLAINS, NEW YORK
WESTCHESTER COUNTY (HPN)