

APP CRS 257°	Rwy Idg 4500
	TDZE 9
	Apt Elev 13

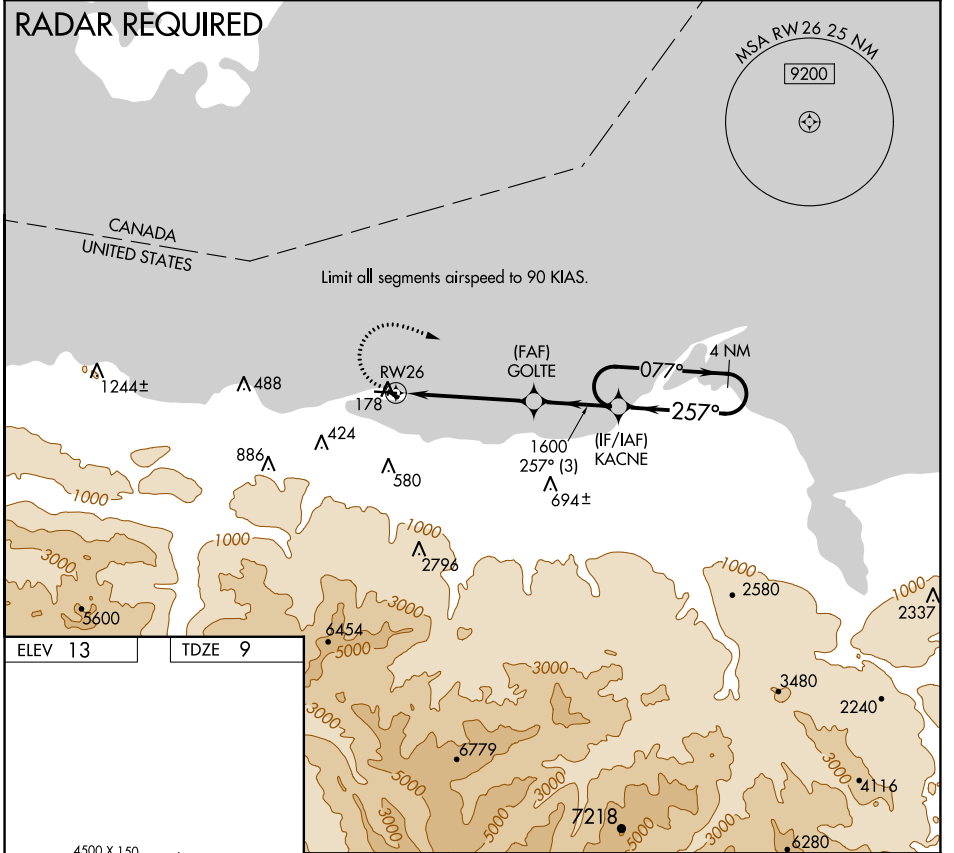
COPTER RNAV (GPS) RWY 26

PORT ANGELES CGAS (NOW)

⚠ Use William R Fairchild Intl altimeter setting; when not received, use Whidbey Island NAS (Autl Fld) altimeter setting and increase MDA 120 feet. DME/DME RNP-0.3 NA. Prior permission required.

⚠ MISSED APPROACH: Climbing right turn to 1900 direct KACNE and hold.

AWOS-3P 118.325	WHIDBEY APP CON 118.2 285.65	PORT ANGELES AIR 127.7 345.0	CLNC DEL 124.15	UNICOM 122.975 (CTAF)
---------------------------	--	--	---------------------------	---------------------------------



ELEV 13	TDZE 9
---------	--------

MIRL Rwy 8-26

1900 KACNE

KACNE 4 NM Holding Pattern

GOLTE

RW26

≤3.00° TCH 30

1600

077° 1900

257°

4.9 NM 3 NM

CATEGORY	COPTER
LNAV MDA	560-1 551 (600-1)

NW-1, 28 NOV 2024 to 26 DEC 2024

NW-1, 28 NOV 2024 to 26 DEC 2024