

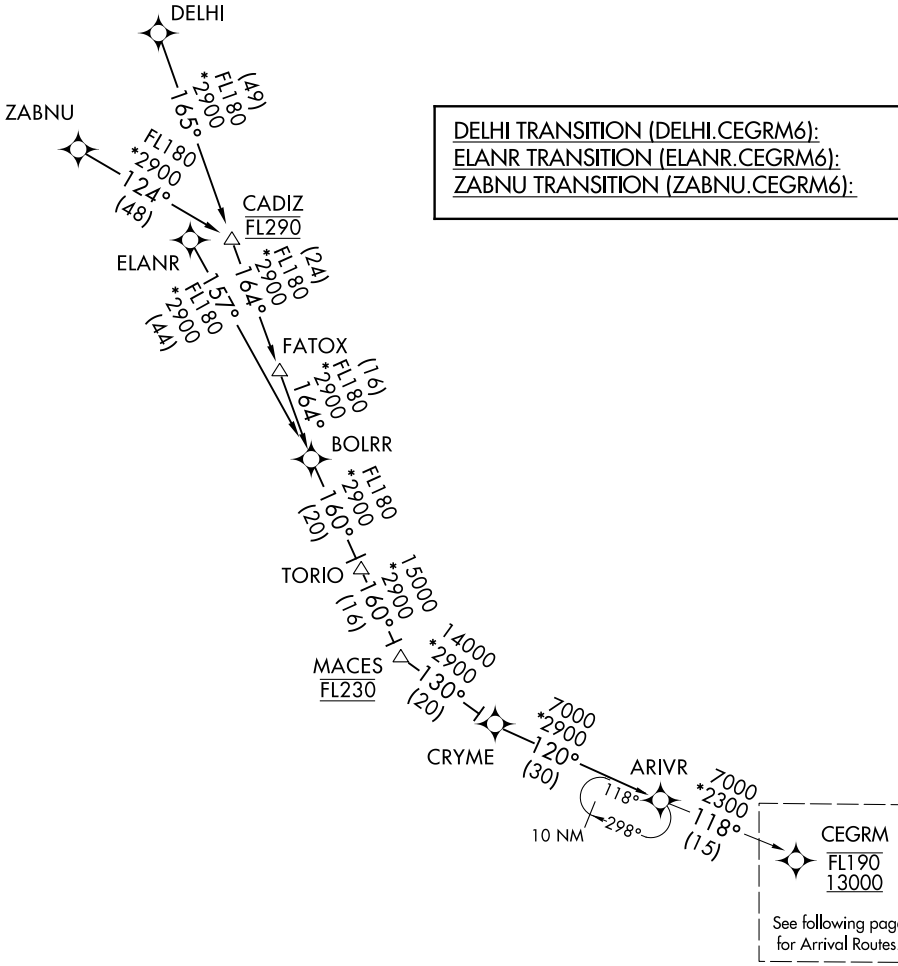
# CEGRM SIX ARRIVAL (RNAV) Transition Routes

CINCINNATI/NORTHERN KENTUCKY INTL (CVG)  
COVINGTON, KENTUCKY

CINCINNATI APP CON  
119.7 363.15 (090°-269°)  
123.875 363.15 (270°-089°)  
D-ATIS 134.375

RNAV 1 - DME/DME/IRU or GPS.

RADAR required.



NOTE: ELANR TRANSITION for use by Chicago area departures only or as assigned by ATC.

NOTE: Chart not to scale.

(CONTINUED ON FOLLOWING PAGE)

SE-1, 28 NOV 2024 to 26 DEC 2024

SE-1, 28 NOV 2024 to 26 DEC 2024

# CEGRM SIX ARRIVAL (RNAV) Arrival Routes

RNAV 1 - DME/DME/IRU or GPS.

RADAR required.

CINCINNATI APP CON  
119.7 363.15 (090°-269°)  
123.875 363.15 (270°-089°)  
D-ATIS 134.375

## ARRIVAL ROUTE DESCRIPTION

From CEGRM on track 131° to BCATT, then on track 131° to EGONE.

LANDING RUNWAY 9: From EGONE on track 150° to cross ACHOO at 8000, then on track 150°. Expect RADAR vectors to final approach course.

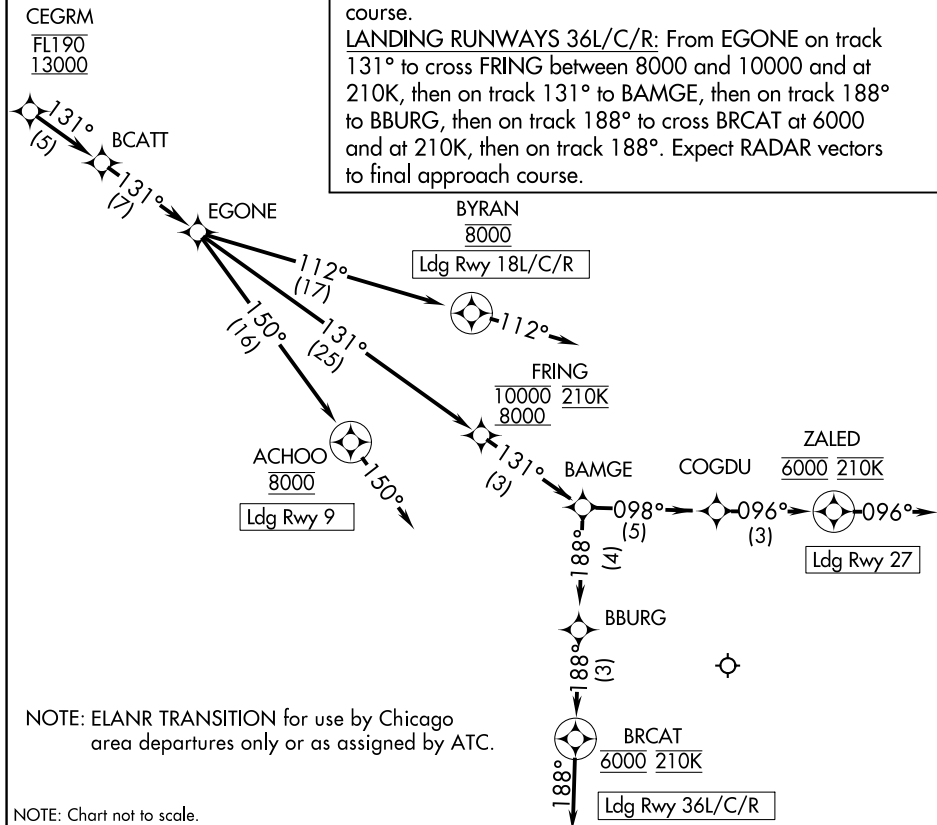
LANDING RUNWAYS 18L/C/R: From EGONE on track 112° to cross BYRAN at 8000, then on track 112°. Expect RADAR vectors to final approach course.

LANDING RUNWAY 27: From EGONE on track 131° to cross FRING between 8000 and 10000 and at 210K, then on track 131° to BAMGE, then on track 098° to COGDU, then on track 096° to cross ZALED at 6000 and at 210K, then on track 096°. Expect RADAR vectors to final approach course.

LANDING RUNWAYS 36L/C/R: From EGONE on track 131° to cross FRING between 8000 and 10000 and at 210K, then on track 131° to BAMGE, then on track 188° to BBURG, then on track 188° to BRCAT at 6000 and at 210K, then on track 188°. Expect RADAR vectors to final approach course.

SE-1, 28 NOV 2024 to 26 DEC 2024

SE-1, 28 NOV 2024 to 26 DEC 2024



NOTE: Chart not to scale.

# CEGRM SIX ARRIVAL (RNAV) Arrival Routes