

(CHCLL6.CHCLL) 24109

# CHCLL SIX DEPARTURE (RNAV)

CINCINNATI/NORTHERN KENTUCKY INTL (CVG)  
AL-655 (FAA)  
COVINGTON, KENTUCKY

CINCINNATI DEP CON  
126.65 254.25 (001°-180°)  
128.7 254.25 (181°-360°)  
D-ATIS DEP  
135.3  
CLNC DEL  
127.175  
CPDIC  
GND CON  
121.7  
CINCINNATI TOWER  
118.3 (RWYS 18C/36C, 9/27)  
118.975 360.85 (RWY 18L/36R)  
133.325 (RWY 18R/36L)

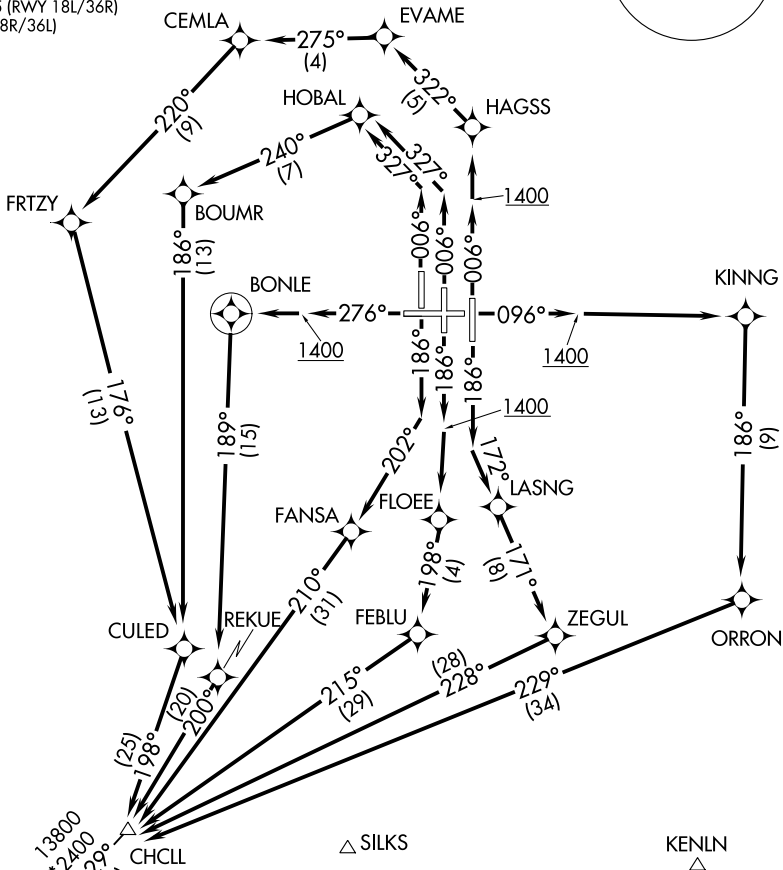
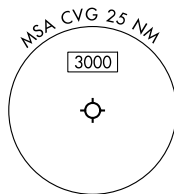
RNAV 1 - DME/DME/IRU or GPS.

RADAR required for non-GPS equipped aircraft.

**TOP ALTITUDE:**  
(JETS) 5000/(PROPS) 4000

### TAKEOFF MINIMUMS

Rwys 9, 18L/C/R, 27, 36L/C/R: Standard.



NOTE: Increase speed to 250K until reaching/leaving 10000'. If unable, advise ATC.

NOTE: Transponder code will be issued via PDC or Cincinnati CLNC DEL.

(CONTINUED ON FOLLOWING PAGE)

NOTE: Chart not to scale.

SE-1, 28 NOV 2024 to 26 DEC 2024

SE-1, 28 NOV 2024 to 26 DEC 2024

# CHCLL SIX DEPARTURE (RNAV)

(CHCLL6.CHCLL) 21MAR24

COVINGTON, KENTUCKY  
CINCINNATI/NORTHERN KENTUCKY INTL (CVG)



DEPARTURE ROUTE DESCRIPTION

TAKEOFF RUNWAY 9: Climb on heading 096° to 1400, then direct KINNG, then on track 186° to ORRON, then on track 229° to CHCLL, thence . . . .

TAKEOFF RUNWAY 18C: Climb on heading 186° to 1400, then direct FLOEE, then on track 198° to FEBLU, then on track 215° to CHCLL, thence . . . .

TAKEOFF RUNWAY 18L: Climb on heading 186° to intercept course 172° to LASNG, then on track 171° to ZEGUL, then on track 228° to CHCLL, thence . . . .

TAKEOFF RUNWAY 18R: Climb on heading 186° to intercept course 202° to FANSA, then on track 210° to CHCLL, thence . . . .

TAKEOFF RUNWAY 27: Climb on heading 276° to 1400, then direct BONLE, then on track 189° to REKUE, then on track 200° to CHCLL, thence . . . .

TAKEOFF RUNWAY 36C: Climb on heading 006° to intercept course 327° to HOBAL, then on track 240° to BOUMR, then on track 186° to CULED, then on track 198° to CHCLL, thence . . . .

TAKEOFF RUNWAY 36L: Climb on heading 006° to intercept course 327° to HOBAL, then left turn on track 240° to BOUMR, then on track 186° to CULED, then on track 198° to CHCLL, thence . . . .

TAKEOFF RUNWAY 36R: Climb on heading 006° to 1400, then direct HAGSS, then on track 322° to EVAME, then on track 275° to CEMLA, then on track 220° to FRTZY, then on track 176° to CULED, then on track 198° to CHCLL, thence . . . .

. . . . Turbojets: maintain 5000, all other aircraft: maintain 4000.  
Expect clearance to filed altitude within ten minutes after departure.

- BUSYY TRANSITION (CHCLL6.BUSYY)
- SKAMR TRANSITION (CHCLL6.SKAMR)
- RAMRD TRANSITION (CHCLL6.RAMRD)

SE-1, 28 NOV 2024 to 26 DEC 2024

SE-1, 28 NOV 2024 to 26 DEC 2024