

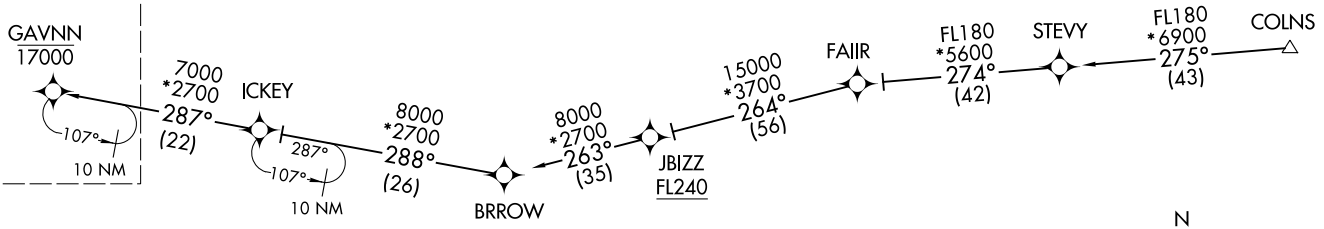
RNAV 1 - DME/DME/IRU or GPS.
RADAR required.

(GAVNN, GAVNN7) 24081
AL-655 (FAA)
CINCINNATI/NORTHERN KENTUCKY INTL (CVG)
COVINGTON, KENTUCKY
GAVNN SEVEN ARRIVAL (RNAV) Transition Routes

(GAVNN, GAVNN7) 21MAR24
GAVNN SEVEN ARRIVAL (RNAV) Transition Routes
CINCINNATI/NORTHERN KENTUCKY INTL (CVG)
COVINGTON, KENTUCKY

CINCINNATI APP CON
119.7 363.15 (090°-269°)
123.875 363.15 (270°-089°)
D-ATIS
134.375

See following page
for arrival routes



COLNS TRANSITION (COLNS.GAVNN7):
FAIR TRANSITION (FAIR.GAVNN7):

(CONTINUED ON FOLLOWING PAGE)

NOTE: Chart not to scale.

(GAVNN.GAVNN7) 24081

AL-655 (FAA)

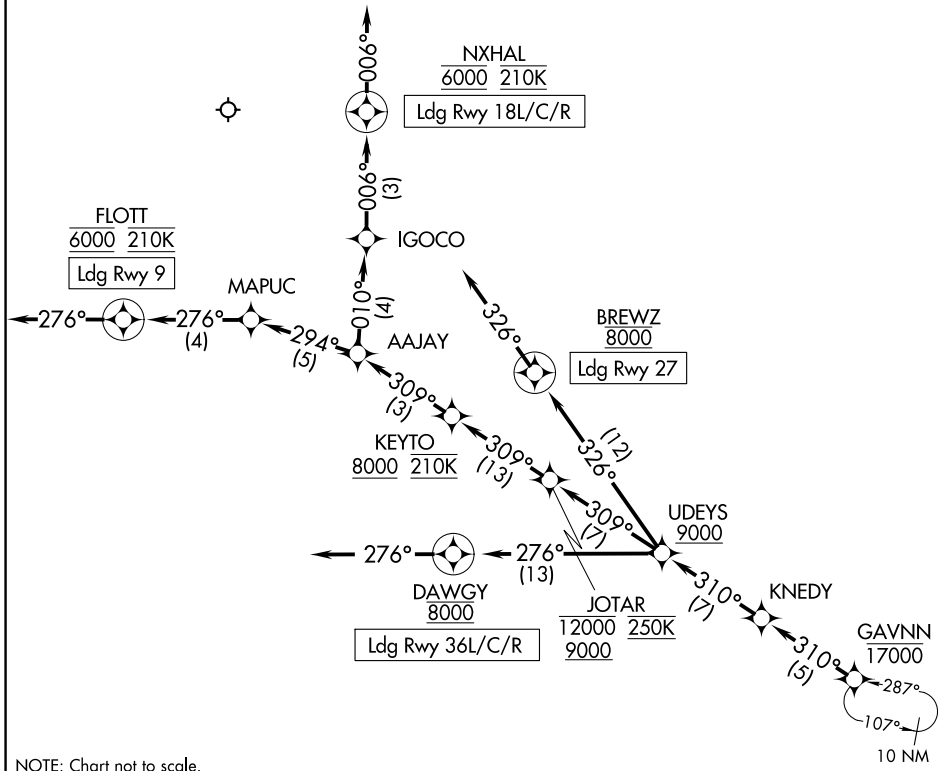
CINCINNATI/NORTHERN KENTUCKY INTL (CVG)

GAVNN SEVEN ARRIVAL (RNAV) Arrival Routes

COVINGTON, KENTUCKY

CINCINNATI APP CON
119.7 363.15 (090°-269°)
123.875 363.15 (270°-089°)
D-ATIS
134.375

RNAV 1 - DME/DME/IRU or GPS.
RADAR required.



ARRIVAL ROUTE DESCRIPTION

From GAVNN on track 310° to KNEDY, then on track 310° to UDEYS at or above 9000.

LANDING RUNWAY 9: From UDEYS on track 309° to cross JOTAR between 9000 and 12000 and at 250K, then on track 309° to cross KEYTO at or above 8000 and at 210K, then on track 309° to AAJAY, then on track 294° to MAPUC, then on track 276° to cross FLOTT at 6000 and at 210K, then on track 276°.

Expect RADAR vectors to final approach course.

LANDING RUNWAYS 18L/C/R: From UDEYS on track 309° to cross JOTAR between 9000 and 12000 and at 250K, then on track 309° to cross KEYTO at or above 8000 and at 210K, then on track 309° to AAJAY, then on track 010° to IGOCO, then on track 006° to cross NXHAL at 6000 and at 210K, then on track 006°.

Expect RADAR vectors to final approach course.

LANDING RUNWAY 27: From UDEYS on track 326° to cross BREWZ at 8000, then on track 326°. Expect RADAR vectors to final approach course.

LANDING RUNWAYS 36L/C/R: From UDEYS on track 276° to cross DAWGY at 8000, then on track 276°. Expect RADAR vectors to final approach course.

GAVNN SEVEN ARRIVAL (RNAV) Arrival Routes

COVINGTON, KENTUCKY

(GAVNN.GAVNN7) 21MAR24

CINCINNATI/NORTHERN KENTUCKY INTL (CVG)

SE-1, 28 NOV 2024 to 26 DEC 2024

SE-1, 28 NOV 2024 to 26 DEC 2024