

(HAGOL5.HAGOL) 24081

CINCINNATI/NORTHERN KENTUCKY INTL (CVG)

HAGOL FIVE DEPARTURE (RNAV)

AL-655 (FAA)

COVINGTON, KENTUCKY

CINCINNATI DEP CON
 126.65 254.25 (001°-180°)
 128.7 254.25 (181°-360°)
 D-ATIS DEP 135.3
 CLNC DEL 127.175
 CPDLC
 GND CON 121.7
 CINCINNATI TOWER
 118.3 (RWYS 18C/36C, 9/27)
 118.975 360.85 (RWY 18L/36R)
 133.325 (RWY 18R/36L)

RNAV 1 - DME/DME/IRU or GPS.

RADAR required for non-GPS equipped aircraft.

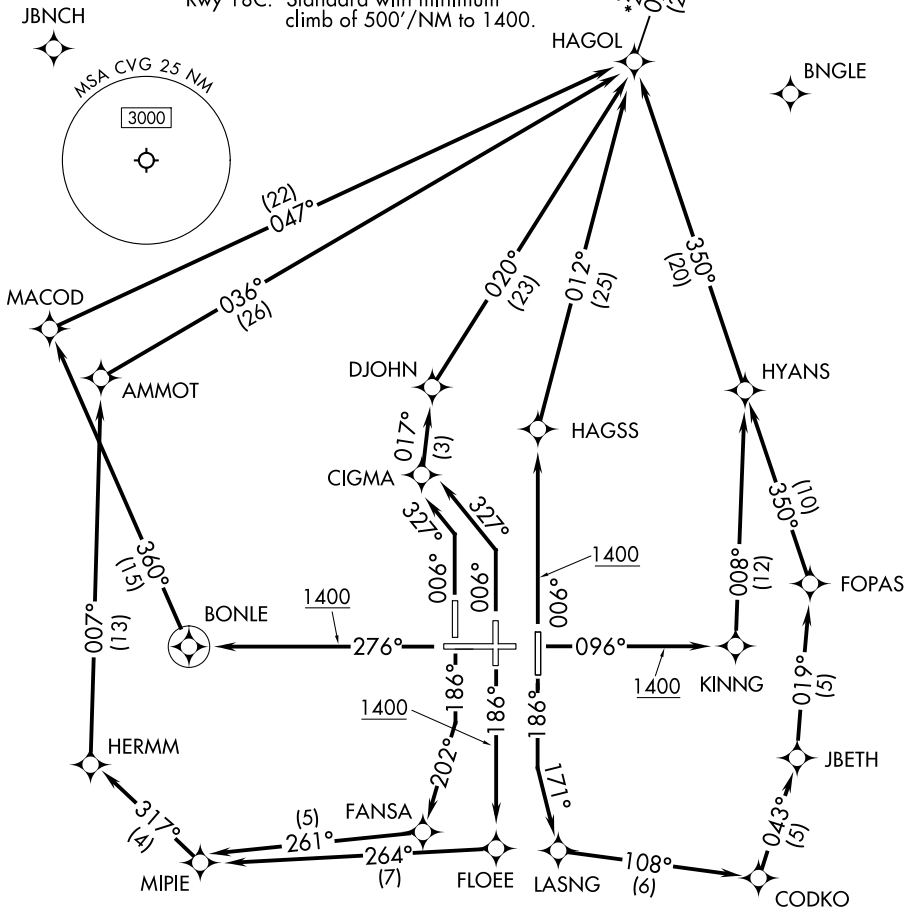
TOP ALTITUDE:

(JETS/PROPS)
5000 4000

- NOTE: If unable to accept climb rates, advise ATC on initial contact.
- NOTE: Transponder code will be issued via PDC or Cincinnati CLNC DEL.
- NOTE: Increase speed to 250K until reaching/leaving 10000'. If unable, advise ATC.

TAKEOFF MINIMUMS:

Rwys 9, 18L/R, 27, 36L/C/R: Standard.
 Rwy 18C: Standard with minimum climb of 500'/NM to 1400.



(CONTINUED ON FOLLOWING PAGE)

HAGOL FIVE DEPARTURE (RNAV)

COVINGTON, KENTUCKY

(HAGOL5.HAGOL) 21MAR24

CINCINNATI/NORTHERN KENTUCKY INTL (CVG)

SE-1, 28 NOV 2024 to 26 DEC 2024

SE-1, 28 NOV 2024 to 26 DEC 2024



DEPARTURE ROUTE DESCRIPTION

TAKEOFF RUNWAY 9: Climb on heading 096° to 1400, then direct KINNG, then on track 008° to HYANS, then on track 350° to HAGOL, thence. . . .

TAKEOFF RUNWAY 18L: Climb on heading 186° to intercept course 171° to LASNG, then on track 108° to CODKO, then on track 043° to JBETH, then on track 019° to FOPAS, then on track 350° to HYANS, then on track 350° to HAGOL, thence. . . .

TAKEOFF RUNWAY 18C: Climb on heading 186° to 1400, then direct FLOEE, then on track 264° to MIPIE, then on track 317° to HERMM, then on track 007° to AMMOT, then on track 036° to HAGOL, thence. . . .

TAKEOFF RUNWAY 18R: Climb on heading 186° to intercept course 202° to FANSA, then on track 261° to MIPIE, then on track 317° to HERMM, then on track 007° to AMMOT, then on track 036° to HAGOL, thence. . . .

TAKEOFF RUNWAY 27: Climb on heading 276° to 1400, then direct BONLE, then on track 360° to MACOD, then on track 047° to HAGOL, thence. . . .

TAKEOFF RUNWAY 36L: Climb on heading 006° to intercept course 327° to CIGMA, then on track 017° to DJOHN, then on track 020° to HAGOL, thence. . . .

TAKEOFF RUNWAY 36C: Climb on heading 006° to intercept course 327° to CIGMA, then on track 017° to DJOHN, then on track 020° to HAGOL, thence. . . .

TAKEOFF RUNWAY 36R: Climb on heading 006° to 1400, then direct HAGSS, then on track 012° to HAGOL, thence. . . .

. . . .Turbojets: maintain 5000, all other aircraft: maintain 4000.

Expect clearance to filed altitude within ten minutes after departure.

PLASH TRANSITION (HAGOL5.PLASH)

RINTE TRANSITION (HAGOL5.RINTE)

SE-1, 28 NOV 2024 to 26 DEC 2024

SE-1, 28 NOV 2024 to 26 DEC 2024