

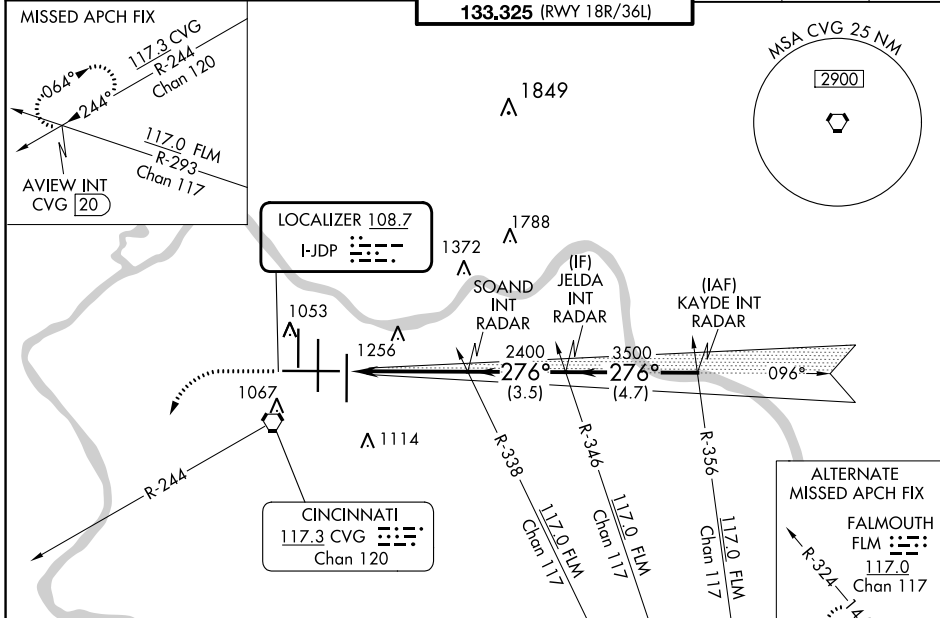
LOC I-JDP 108.7	APP CRS 276°	Rwy Idg 12000 TDZE 875 Apt Elev 896
---------------------------	------------------------	--

ILS RWY 27 (SA CAT I & II)

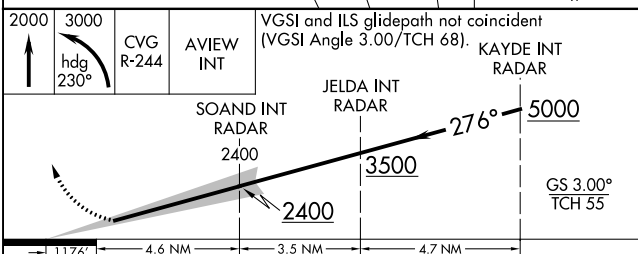
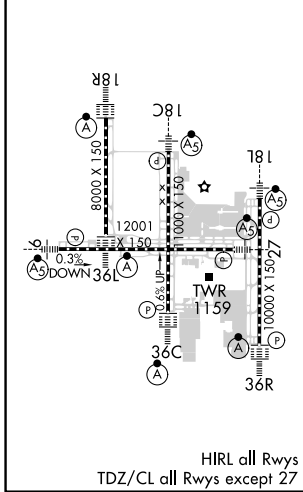
CINCINNATI/NORTHERN KENTUCKY INTL (CVG)

RADAR required for procedure entry.		MALSR 	MISSED APPROACH: Climb to 2000 then climbing left turn to 3000 on heading 230° and CVG R-244 to AVIEW INT/ CVG 20 DME and hold.	
SA Cat I & II: Requires specific OPSPEC, MSPEC, or LOA approval.				

D-ATIS ARR 134.375 DEP 135.3	CINCINNATI APP CON 119.7 363.15 (090°-269°) 123.875 363.15 (270°-089°)	CINCINNATI TOWER 118.975 360.85 (RWY 18L/36R) 118.3 (RWYS 18C/36C, 09/27) 133.325 (RWY 18R/36L)	GND CON 121.7	CLNC DEL 127.175	CPDLC
---	--	---	-------------------------	----------------------------	-------



ELEV 896	D	TDZE 875
----------	----------	----------



CATEGORY	A	B	C	D
S-ILS 27	SA CAT I	RA 137/14	150 DA 1025	
S-ILS 27	SA CAT II	RA 90/12	100 DA 975	

SA CATEGORY I & II ILS - SPECIAL AIRCREW & AIRCRAFT CERTIFICATION REQUIRED

SE-1, 28 NOV 2024 to 26 DEC 2024

SE-1, 28 NOV 2024 to 26 DEC 2024