

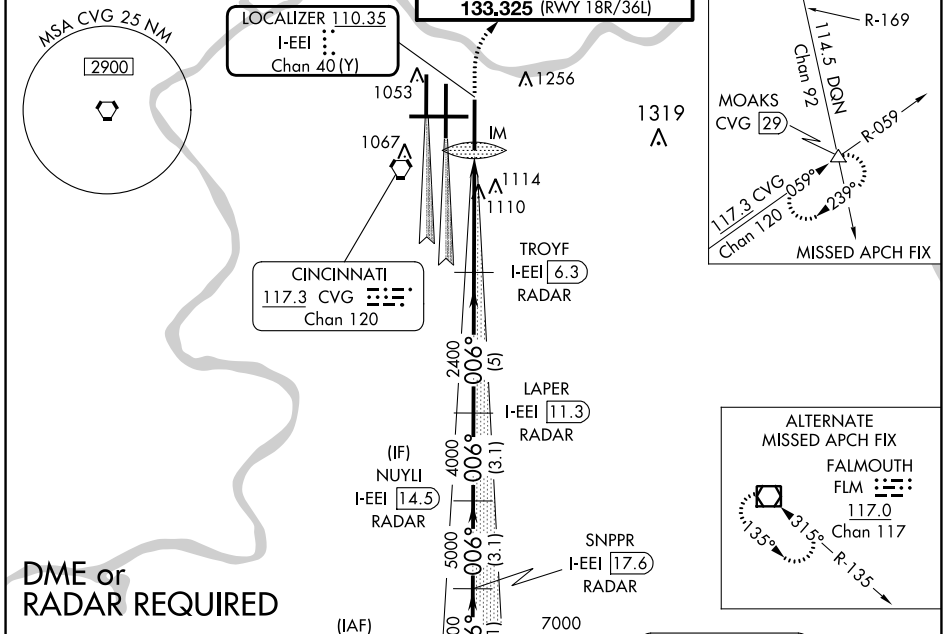
|   |                        |   |
|---|------------------------|---|
| LOC/DME I-EEI<br><b>110.35</b><br>Chan 40 (Y) | APP CRS<br><b>006°</b> | Rwy Idg<br>TDZE<br>Apt Elev<br><b>10000</b><br><b>896</b><br><b>896</b> |
|---|------------------------|---|

# ILS RWY 36R (CAT II & III)

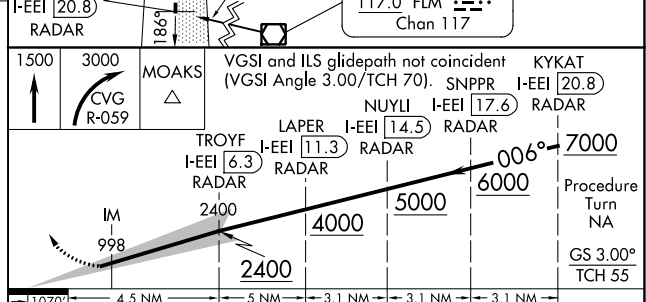
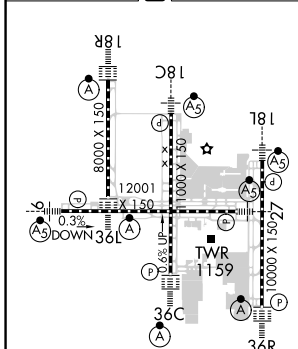
CINCINNATI/NORTHERN KENTUCKY INTL (CVG)

|  |  |   |
|--|--|---|
| <p>Simultaneous approach authorized with Rwy 36C and 36L. DME or radar required.</p> | <p>ALSIF-2</p>                             | <p>MISSED APPROACH: Climb to 1500 then climbing right turn to 3000 via CVG R-059 to MOAKS Int/ CVG 29 DME and hold.</p> |
|  | <p>ARR <b>134.375</b> DEP <b>135.3</b></p> | <p>CINCINNATI APP CON<br/><b>119.7 363.15</b> (090°-269°)<br/><b>123.875 363.15</b> (270°-089°)</p>                     |

|   |  |   |                         |                            |       |
|---|--|---|-------------------------|----------------------------|-------|
| D-ATIS<br>ARR <b>134.375</b> DEP <b>135.3</b> | CINCINNATI APP CON<br><b>119.7 363.15</b> (090°-269°)<br><b>123.875 363.15</b> (270°-089°) | CINCINNATI TOWER<br><b>118.975 360.85</b> (RWY 18L/36R)<br><b>118.3</b> (RWYS 18C/36C, 09/27)<br><b>133.325</b> (RWY 18R/36L) | GND CON<br><b>121.7</b> | CLNC DEL<br><b>127.175</b> | CPDLC |
|---|--|---|-------------------------|----------------------------|-------|



**DME or RADAR REQUIRED**



|           |                            |   |   |   |
|-----------|----------------------------|---|---|---|
| CATEGORY  | A                          | B | C | D |
| S-ILS 36R | CAT II RA 98/12 100 DA 996 |   |   |   |
| S-ILS 36R | CAT IIIa RVR 07            |   |   |   |
| S-ILS 36R | CAT IIIb RVR 06            |   |   |   |
| S-ILS 36R | CAT IIIc NA                |   |   |   |

**CATEGORY II & III ILS - SPECIAL AIRCREW & AIRCRAFT CERTIFICATION REQUIRED**

SE-1, 28 NOV 2024 to 26 DEC 2024

SE-1, 28 NOV 2024 to 26 DEC 2024