

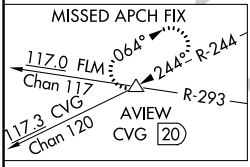
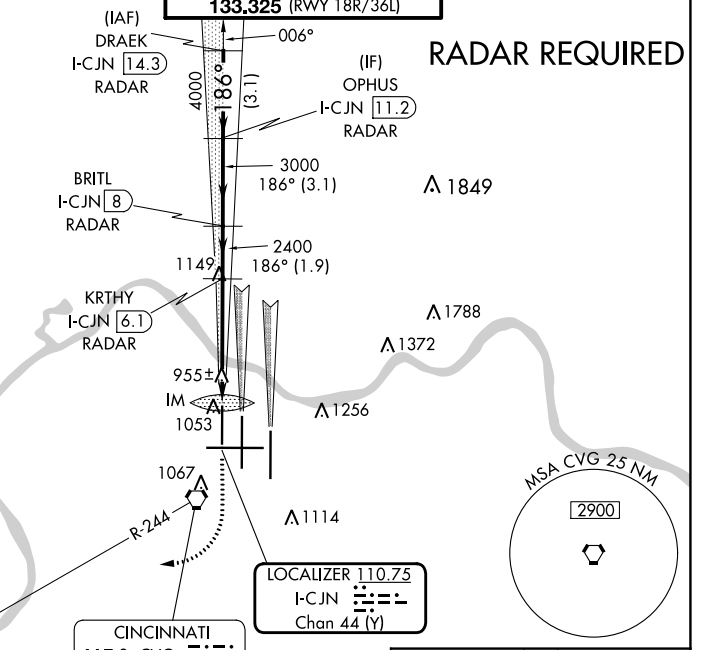
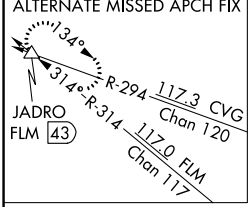
LOC/DME I-CJN <b>110.75</b> Chan <b>44</b> (Y)	APP CRS <b>186°</b>	Rwy Idg <b>8000</b>
		TDZE <b>868</b>
		Apt Elev <b>896</b>

**ILS or LOC RWY 18R**  
CINCINNATI/NORTHERN KENTUCKY INTL (CVG)

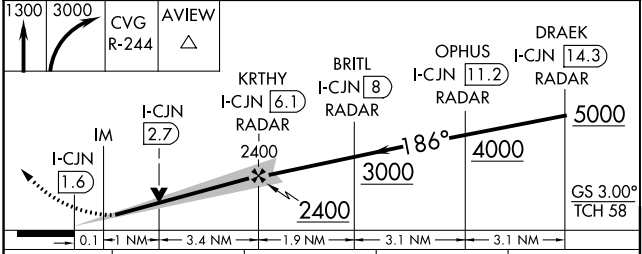
**⚠** Simultaneous approach authorized with Rwy 18C and 18L.  
**⚠** DME or radar required.

ALSF-2  
MISSED APPROACH: Climb to 1300 then climbing right turn to 3000 via CVG R-244 to AVIEW INT/CVG 20 DME and hold.

D-ATIS ARR <b>134.375</b> DEP <b>135.3</b>	CINCINNATI APP CON <b>119.7 363.15</b> (090°-249°) <b>123.875 363.15</b> (270°-089°)	CINCINNATI TOWER <b>118.975 360.85</b> (RWY 18L/36R) <b>118.3</b> (RWYS 18C/36C, 09/27) <b>133.325</b> (RWY 18R/36L)	GND CON <b>121.7</b>	CINC DEL <b>127.175</b>	CPDLC
---	--	---	-------------------------	----------------------------	-------



CINCINNATI  
**117.3 CVG** Chan 120



ELEV 896	<b>D</b>	TDZE 868
----------	----------	----------

HIRL all Rwy's  
TDZ/CL all Rwy's except 27  
FAF to MAP 4.6 NM

Knots	60	90	120	150	180
Min:Sec	4:36	3:04	2:18	1:50	1:32

CATEGORY	A	B	C	D
S-ILS 18R	1068/18		200 (200-1/2)	
S-LOC 18R	1300/24	432 (500-1/2)	1300/40 432 (500-3/4)	1300/50 432 (500-1)
CIRCLING	1460-1	564 (600-1)	1560-1 3/4 664 (700-1 3/4)	1560-2 664 (700-2)

SE-1, 28 NOV 2024 to 26 DEC 2024

SE-1, 28 NOV 2024 to 26 DEC 2024