

LOC/DME I-CVG <b>109.9</b> Chan 36	APP CRS <b>006°</b>	Rwy Idg <b>11000</b> TDZE <b>851</b> Apt Elev <b>896</b>
--	------------------------	--

# ILS or LOC RWY 36C

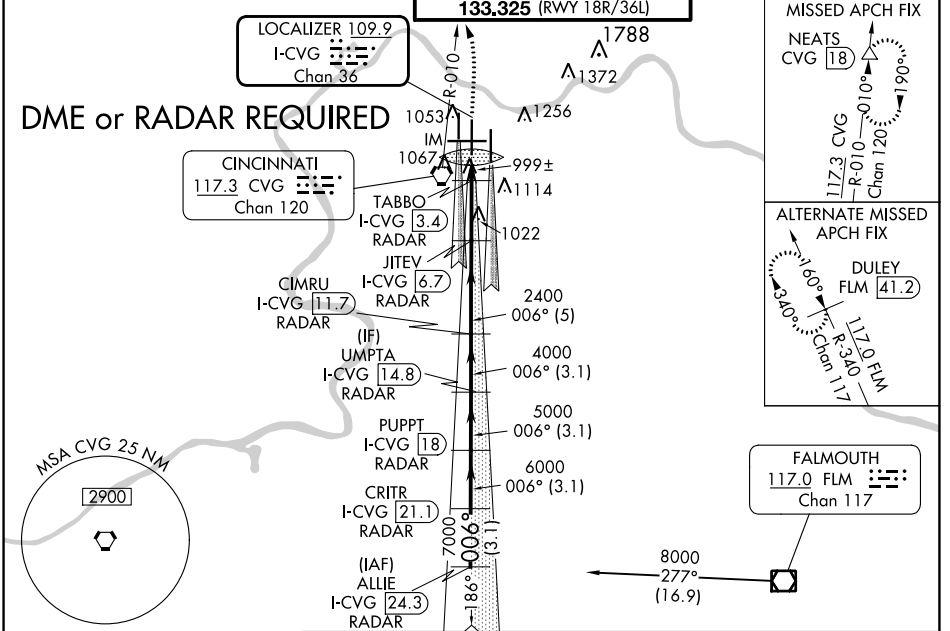
CINCINNATI/NORTHERN KENTUCKY INTL (CVG)

**Simultaneous approach authorized with Rwy 36L/R.**  
DME required.

ALSf-2

MISSED APPROACH: Climb to 1500 then climbing left turn to 3000 via CVG R-010 to NEATS/CVG 18 DME and hold.

D-ATIS ARR <b>134.375</b> DEP <b>135.3</b>	CINCINNATI APP CON <b>119.7 363.15</b> (090°-269°) <b>123.875 363.15</b> (270°-089°)	CINCINNATI TOWER <b>118.975 360.85</b> (RWY 18L/36R) <b>118.3</b> (RWYS 18C/36C, 09/27) <b>133.325</b> (RWY 18R/36L)	GND CON <b>121.7</b>	CLNC DEL <b>127.175</b>	CPDLC
---	--	---	-------------------------	----------------------------	-------



SE-1, 28 NOV 2024 to 26 DEC 2024

SE-1, 28 NOV 2024 to 26 DEC 2024

ELEV 896	<b>D</b>	TDZE 851	VGSI and ILS glidepath not coincident (VGSI Angle 3.00/TCH 77). NEATS CIMRU I-CVG 11.7 PUPPT I-CVG 18 CRITR I-CVG 21.1 ALLIE I-CVG 24.3			
TDZ/CL all Rwy's except 27 HIRL all Rwy's	1500 3000 CVG R-010		8000 Procedure Turn NA GS 3.00° TCH 52			
# LOC only.						
I-CVG 2 TABBO I-CVG 3.4 JITEV I-CVG 6.7 UMPA I-CVG 14.8 PUPPT I-CVG 18 CRITR I-CVG 21.1 ALLIE I-CVG 24.3						
0.2   1.3 NM   3.2 NM   5 NM   3.1 NM   3.1 NM   3.1 NM						
CATEGORY	A	B	C	D		
S-ILS 36C	1051/18		200 (200-½)			
S-LOC 36C	1340/24	489 (500-½)	1340/50	489 (500-1)		
CIRCLING	1460-1	564 (600-1)	1560-1¾	664 (700-1¾) 1560-2 664 (700-2)		
TABBO FIX MINIMUMS						
S-LOC 36C	1260/24	409 (400-½)	1260/40	409 (400-¾)		
CIRCLING	1460-1	564 (600-1)	1560-1¾	664 (700-1¾) 1560-2 664 (700-2)		