

(KENLN6.KENLN) 24081

# KENLN SIX DEPARTURE (RNAV)

CINCINNATI/NORTHERN KENTUCKY INTL (CVG)

AL-655 (FAA)

COVINGTON, KENTUCKY

CINCINNATI DEP CON  
 126.65 254.25 (001°-180°)  
 128.7 254.25 (181°-360°)  
 D-ATIS DEP 135.3  
 CLNC DEL 127.175  
 CPDLC  
 GND CON 121.7  
 CINCINNATI TOWER  
 118.3 (RWYS 18C/36C, 9/27)  
 118.975 360.85 (RWY 18L/36R)  
 133.325 (RWY 18R/36L)

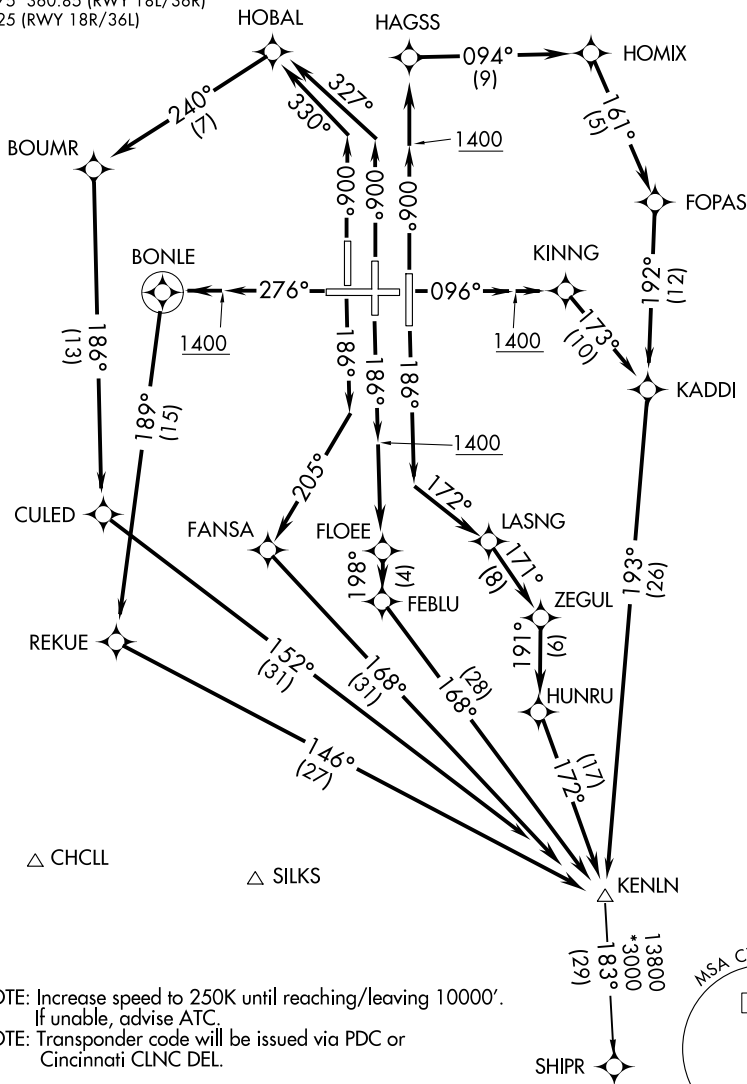
RNAV 1 - DME/DME/IRU or GPS.

RADAR required for non-GPS equipped aircraft.

**TOP ALTITUDE:  
(JETS) 5000/(PROPS) 4000**

### TAKEOFF MINIMUMS

Rwys 9, 18L/C/R, 27, 36L/C/R: Standard.



SE-1, 28 NOV 2024 to 26 DEC 2024

SE-1, 28 NOV 2024 to 26 DEC 2024

NOTE: Chart not to scale.

(CONTINUED ON FOLLOWING PAGE)

**KENLN SIX DEPARTURE (RNAV)**  
(KENLN6.KENLN) 21MAR24

COVINGTON, KENTUCKY  
CINCINNATI/NORTHERN KENTUCKY INTL (CVG)



DEPARTURE ROUTE DESCRIPTION

TAKEOFF RUNWAY 9: Climb on heading 096° to 1400, then direct KINNG, then on track 173° to KADDI, then on track 193° to KENLN, thence. . . .

TAKEOFF RUNWAY 18C: Climb on heading 186° to 1400, then direct FLOEE then on track 198° to FEBLU, then on track 168° to KENLN, thence. . . .

TAKEOFF RUNWAY 18L: Climb on heading 186° to intercept course 172° to LASNG, then on track 171° to ZEGUL, then on track 191° to HUNRU, then on track 172° to KENLN, thence. . . .

TAKEOFF RUNWAY 18R: Climb on heading 186° to intercept course 205° to FANSA, then on track 168° to KENLN, thence. . . .

TAKEOFF RUNWAY 27: Climb on heading 276° to 1400, then direct BONLE, then on track 189° to REKUE, then on track 146° to KENLN, thence. . . .

TAKEOFF RUNWAY 36C: Climb on heading 006° to intercept course 327° to HOBAL, then on track 240° to BOUMR, then on track 186° to CULED, then on track 152° to KENLN, thence. . . .

TAKEOFF RUNWAY 36L: Climb on heading 006° to intercept course 330° to HOBAL, then left turn on track 240° to BOUMR, then on track 186° to CULED, then on track 152° to KENLN, thence. . . .

TAKEOFF RUNWAY 36R: Climb on heading 006° to 1400, then direct HAGSS, then on track 094° to HOMIX, then on track 161° to FOPAS, then on track 192° to KADDI, then on track 193° to KENLN, thence. . . .

. . . .turbojets: Maintain 5000. All other aircraft: Maintain 4000.  
Expect clearance to filed altitude within ten minutes after departure.

SHIPR TRANSITION (KENLN6.SHIPR)

SE-1, 28 NOV 2024 to 26 DEC 2024

SE-1, 28 NOV 2024 to 26 DEC 2024