

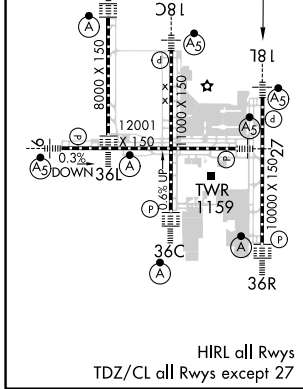
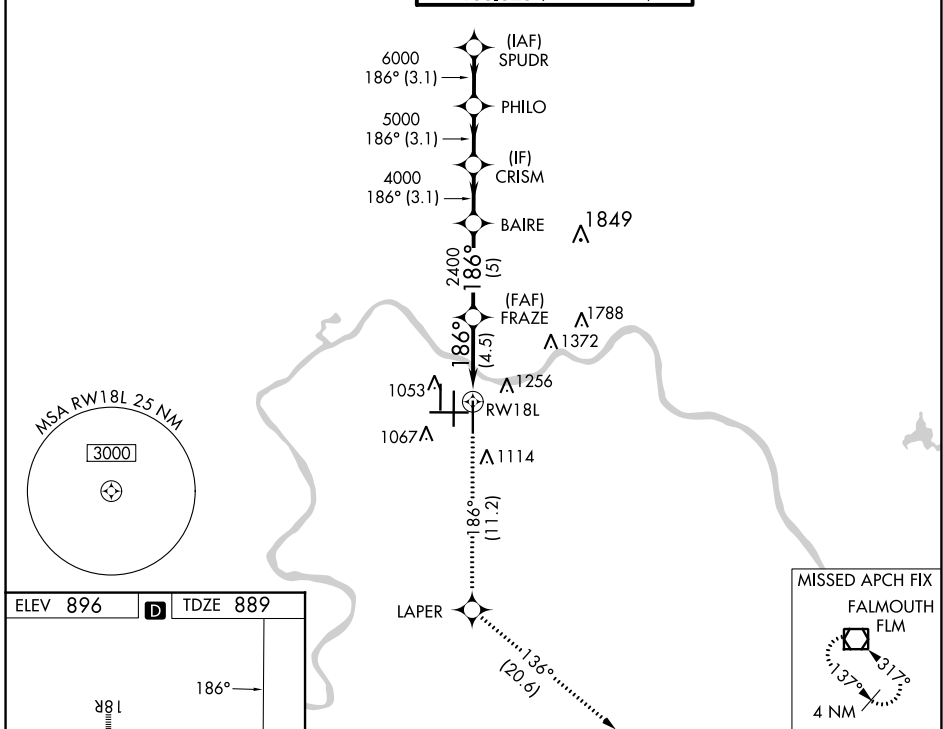
APP CRS	Rwy Idg	<b>10000</b>
<b>186°</b>	TDZE	<b>889</b>
	Apt Elev	<b>896</b>

# RNAV (RNP) Z RWY 18L

CINCINNATI/NORTHERN KENTUCKY INTL (CVG)

RNP AR APCH - GPS.	MALSR	MISSED APPROACH: Climb to 3000 on track 186° to LAPER and on track 136° to FLM VOR/DME and hold.
Simultaneous approach authorized. For uncompensated Baro-VNAV systems, procedure NA below -16°C or above 47°C. For inop ALS, increase RNP 0.25 all Cats visibility to RVR 6000, RNP 0.30 all Cats visibility to 1½ SM.		

D-ATIS	CINCINNATI APP CON	CINCINNATI TOWER	GND CON	CLNC DEL	CPDLC
ARR <b>134.375</b> DEP <b>135.3</b>	<b>119.7 363.15</b> (090°-269°) <b>123.875 363.15</b> (270°-089°)	<b>118.975 360.85</b> (RWY 18L/36R) <b>118.3</b> (RWYS 18C/36C, 09/27) <b>133.325</b> (RWY 18R/36L)	<b>121.7</b>	<b>127.175</b>	



3000	tr 186°	LAPER	tr 136°	FLM	VGSI and RNAV glidepath not coincident (VGSI Angle 3.00/TCH 71).
		FRAZE	BAIRE	CRISM	PHILO
		2400	4000	5000	6000
					SPUDR
					7000
					GP 3.00°
					TCH 55
		4.5 NM	5 NM	3.1 NM	3.1 NM
CATEGORY	A	B	C	D	
RNP 0.25 DA	1283/35 394 (400-¾)				
RNP 0.30 DA	1472-1¼ 583 (600-1¼)				

**AUTHORIZATION REQUIRED**

SE-1, 28 NOV 2024 to 26 DEC 2024

SE-1, 28 NOV 2024 to 26 DEC 2024