

WAAS CH 58099 W18D	APP CRS 186°	Rwy Idg 8000 TDZE 868 Apt Elev 896
--	------------------------	---

RNAV (GPS) Y RWY 18R

CINCINNATI/NORTHERN KENTUCKY INTL (CVG)

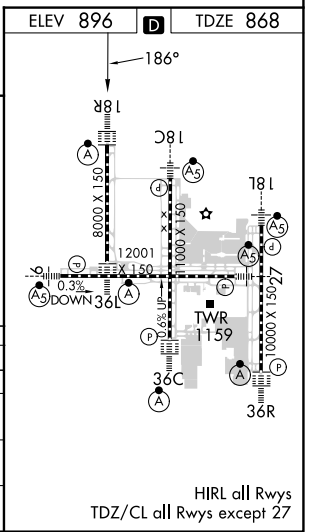
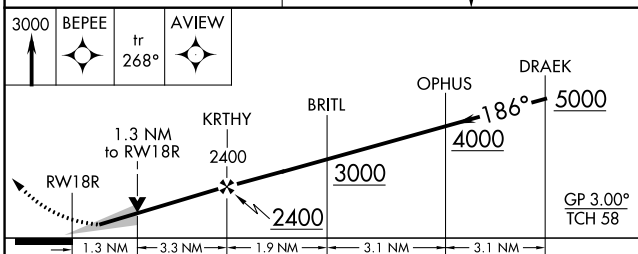
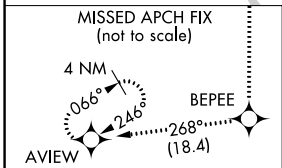
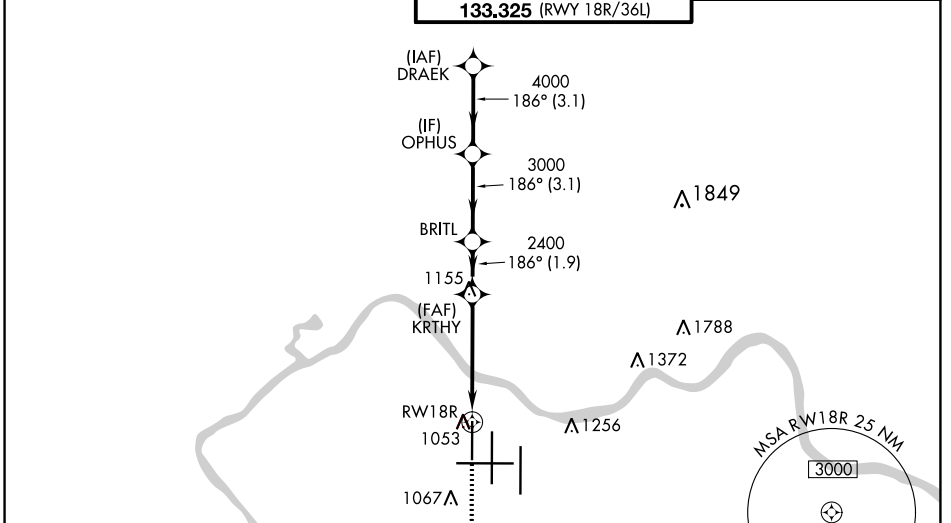
RADAR required for procedure entry. RNP APCH - GPS.

▼ For uncompensated Baro-VNAV systems, LNAV/VNAV NA below -17°C or above 54°C. Simultaneous approach authorized with Rwy 18L/C. LNAV procedure NA during simultaneous operations. Use of FD or AP required during simultaneous operations.



MISSED APPROACH: Climb to 3000 direct BEPEE and on 268° track to AVIEW and hold.

D-ATIS ARR 134.375 DEP 135.3	CINCINNATI APP CON 119.7 363.15 (090°-269°)	CINCINNATI TOWER 118.975 360.85 (RWY 18L/36R) 118.3 (RWYS 18C/36C, 09/27) 133.325 (RWY 18R/36L)	GND CON 121.7	CLNC DEL 127.175	CPDLC
---	---	---	-------------------------	----------------------------	-------



CATEGORY	A	B	C	D
LPV DA		1068/18	200 (200-½)	
LNAV/VNAV DA		1321/45	453 (500-¾)	
LNAV MDA	1320/24	452 (500-½)	1320/45	452 (500-¾)
C CIRCLING	1460-1	564 (600-1)	1560-1¾ 664 (700-1¾)	1560-2 664 (700-2)

SE-1, 28 NOV 2024 to 26 DEC 2024

SE-1, 28 NOV 2024 to 26 DEC 2024

HIRL all Rwys
TDZ/CL all Rwys except 27