

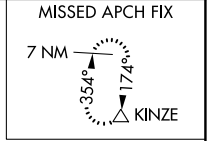
WAAS CH 53709 W07A	APP CRS 071°	Rwy Idg TDZE Apt Elev	5371 3702 3732
--	------------------------	-----------------------------	---

RNAV (GPS) RWY 7

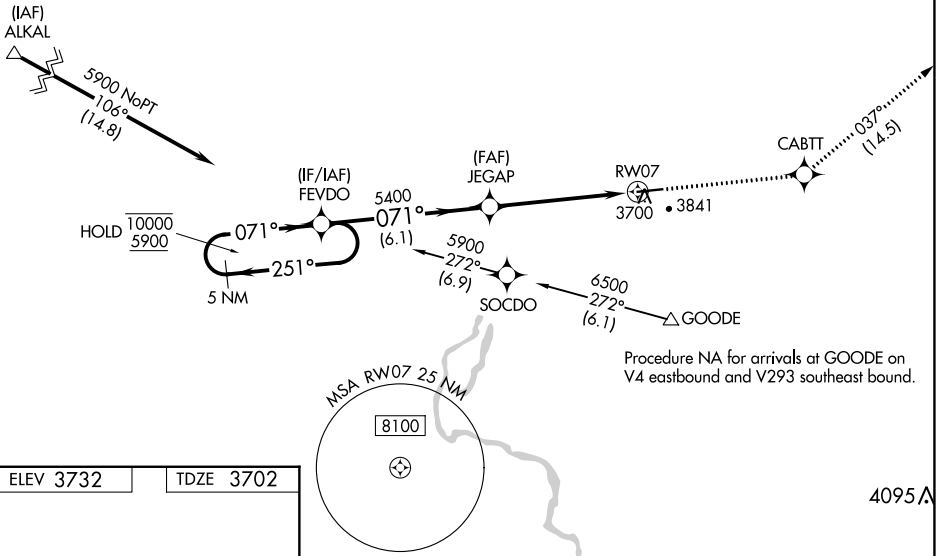
GOODING MUNI (GNG)

RNP APCH - GPS.	MISSED APPROACH: Climb to 7400 direct CABTT and on track 037° to KINZE and hold.
<p>▼ For uncompensated Baro-VNAV systems, procedure NA below -22°C or above 54°C.</p> <p>▲</p>	

AWOS-3PT 124.175	SALT LAKE CENTER 118.05 363.0	UNICOM 122.8 (CTAF) 0
----------------------------	---	---------------------------------



Procedure NA for arrivals at ALKAL on V253 northwest bound and T470 westbound.

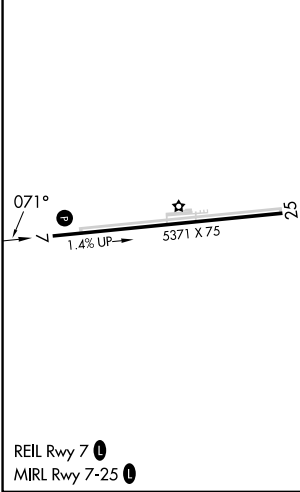


Procedure NA for arrivals at GOODE on V4 eastbound and V293 southeast bound.

NW-1, 28 NOV 2024 to 26 DEC 2024

NW-1, 28 NOV 2024 to 26 DEC 2024

ELEV 3732	TDZE 3702
-----------	-----------



VGSi and RNAV glidepath not coincident (VGSi Angle 2.75/TCH 40).				7400	CABTT	KINZE
5 NM Holding Pattern				↑	✦	tr 037°
FEVDO						△
10000 ← 251°				JEGAP		
5900 → 071°				5400		
GP 3.00° TCH 45				0.9 NM to RW07		
				6.1 NM	4.4 NM	0.9
CATEGORY	A	B	C	D		
LPV DA		3952-¾	250 (300-¾)			
LNNAV/VNAV DA		3952-¾	250 (300-¾)			
LNNAV MDA	3960-1	258 (300-1)		3960-¾	258 (300-¾)	