

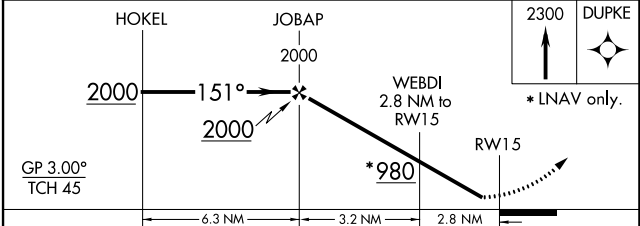
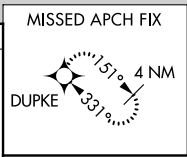
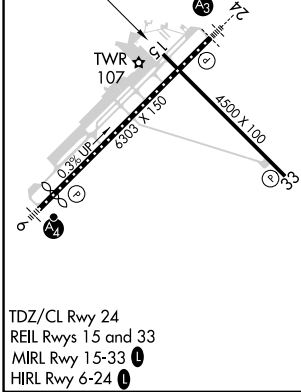
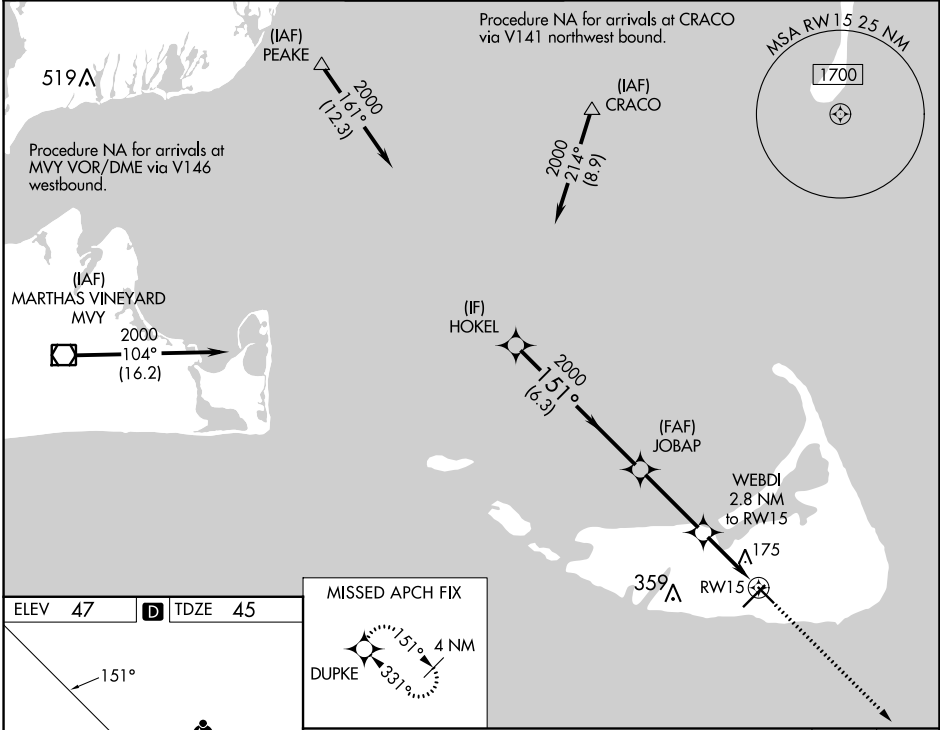
WAAS CH 97623 W15A	APP CRS 151°	Rwy ldg 4500 TDZE 45 Apt Elev 47
--	------------------------	---

RNAV (GPS) RWY 15

NANTUCKET MEML (ACK)

RNP APCH.		<p>Baro-VNAV NA when using Hyannis altimeter setting. For uncompensated Baro-VNAV systems, LNAV/VNAV NA below -15°C or above 43°C. Rwy 15 helicopter visibility reduction below ¾ SM NA. When local altimeter setting not received, use Hyannis altimeter setting and increase LPV DA to 358, LNAV/VNAV DA to 543, and all MDA 80 feet; increase LNAV/VNAV all Cats and LNAV Cats C and D visibility ¼ mile.</p>		<p>MISSED APPROACH: Climb to 2300 direct DUPKE and hold.</p>	
-----------	--	--	--	--	--

ATIS 127.5	BOSTON APP CON 126.1 318.1	NANTUCKET TOWER * 118.3 (CTAF) 0	GND CON 132.5	CLNC DEL 119.375	UNICOM 122.95
----------------------	--------------------------------------	--	-------------------------	----------------------------	-------------------------



CATEGORY	A	B	C	D
LPV DA	295-1 250 (300-1)			
LNAV/VNAV DA	480-1½ 435 (500-1½)			
LNAV MDA	440-1 395 (400-1)		440-1⅛ 395 (400-1⅛)	

NE-1, 28 NOV 2024 to 26 DEC 2024

NE-1, 28 NOV 2024 to 26 DEC 2024