

LOC/DME I-ZK <b>109.9</b> Chan 36	APP CRS <b>222°</b>	Rwy Idg <b>7502</b> TDZE <b>933</b> Apt Elev <b>962</b>
---	------------------------	---

# ILS or LOC RWY 22

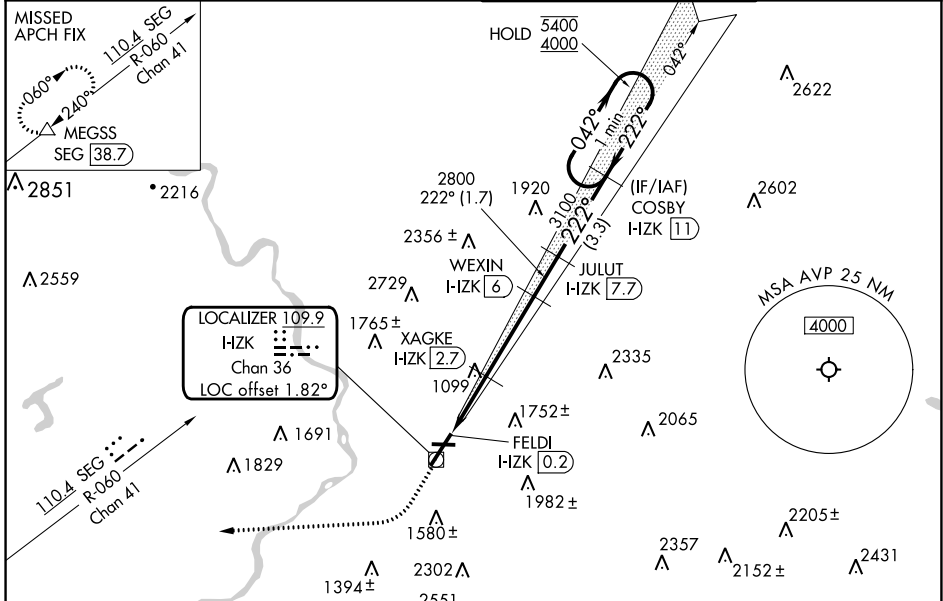
WILKES-BARRE/SCRANTON INTL (AVP)

RADAR required for procedure entry. DME required.

**⚠** Circling NA for Cats C and D southeast of Rwy 4-22.  
Circling Rwy 28 NA at night.

MISSED APPROACH: Climb to 1500 then climbing right turn to 4000 on heading 275° and SEG VOR/DME R-060 to MEGSS/SEG 38.7 DME and hold.

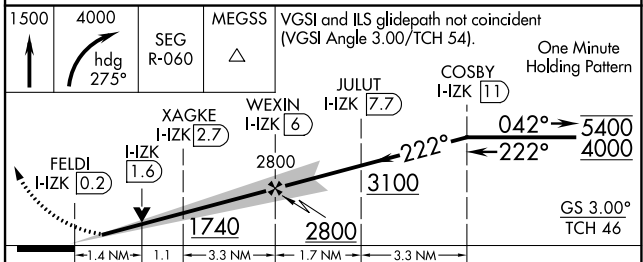
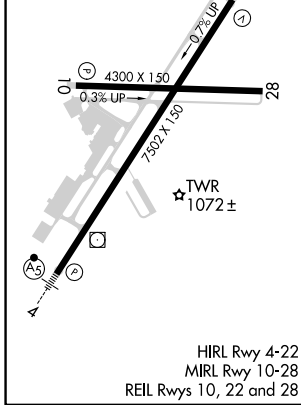
ATIS <b>135.75</b>	WILKES-BARRE APP CON <b>120.95 256.7</b> <b>126.3 256.7</b> (280°-100°) (101°-279°)	WILKES-BARRE TOWER <b>120.1 257.8</b>	GND CON <b>121.9</b>
-----------------------	--	--	-------------------------



NE-4, 28 NOV 2024 to 26 DEC 2024

NE-4, 28 NOV 2024 to 26 DEC 2024

ELEV 962	<b>D</b>	TDZE 933
----------	----------	----------



CATEGORY	A	B	C	D
S-ILS 22	1201/45 268 (300-7%)			
S-LOC 22	1400/55	467 (500-1)	1400-1 <sup>3</sup> / <sub>8</sub> 467 (500-1 <sup>3</sup> / <sub>8</sub> )	
CIRCLING	1840-1 <sup>1</sup> / <sub>4</sub> 878 (900-1 <sup>1</sup> / <sub>4</sub> )	1980-1 <sup>1</sup> / <sub>2</sub> 1018 (1100-1 <sup>1</sup> / <sub>2</sub> )	1980-3 1018 (1100-3)	2280-3 1318 (1400-3)