


SCRANTON EIGHT DEPARTURE

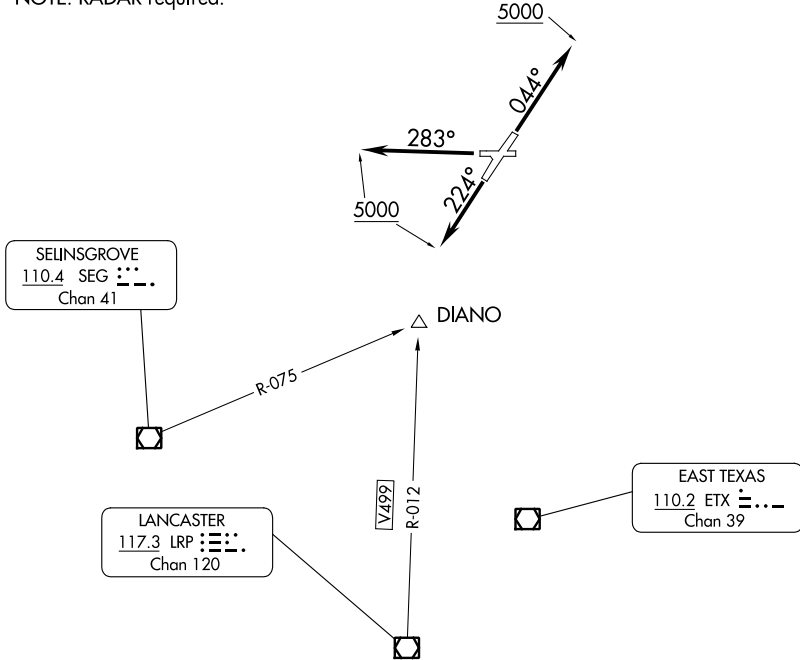
WILKES-BARRE/SCRANTON INTL (AVP)
WILKES-BARRE/SCRANTON, PENNSYLVANIA

**TOP ALTITUDE:
5000**

ATIS
135.75
GND CON
121.9
WILKES-BARRE TOWER
120.1 257.8
WILKES-BARRE DEP CON
120.95 256.7 (NORTH)
126.3 256.7 (SOUTH)

BINGHAMTON
112.2 CFB 
Chan 59

NOTE: RADAR required.



NE-4, 28 NOV 2024 to 26 DEC 2024

NE-4, 28 NOV 2024 to 26 DEC 2024

TAKEOFF MINIMUMS:

- Rwy 10: NA - Obstacles.
- Rwy 4: Standard with minimum climb of 400' per NM to 2700.
- Rwy 22: Standard with minimum climb of 290' per NM to 3100.
- Rwy 28: Standard with minimum climb of 270' per NM to 2100.

NOTE: Chart not to scale.



DEPARTURE ROUTE DESCRIPTION

- TAKEOFF RUNWAY 4: Climb heading 044° to 5000, thence....
- TAKEOFF RUNWAY 22: Climb heading 224° to 5000, thence....
- TAKEOFF RUNWAY 28: Climb heading 283° to 5000, thence....

...expect radar vectors to assigned route/navaid/fix, expect filed altitude 10 minutes after departure.

SCRANTON EIGHT DEPARTURE