

COKTL FOUR ARRIVAL (RNAV) Transition Routes

RNAV 1 - DME/DME/IRU or GPS.

RADAR required.

LAS VEGAS APP CON

125.025 379.15

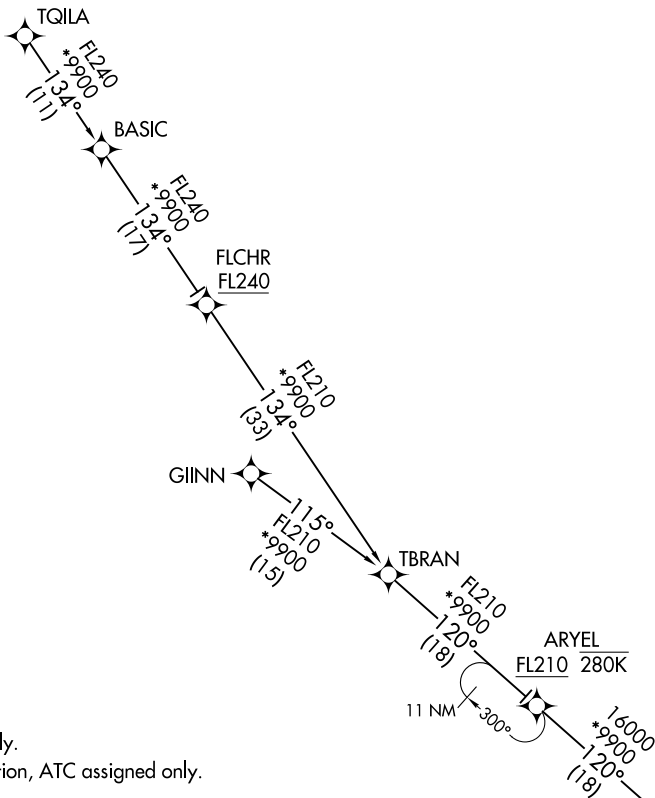
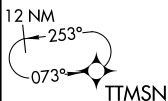
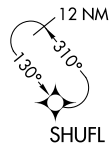
D-ATIS

132.4

LAS VEGAS TOWER

118.75 257.8 (Rwys 1L/19R, 1R/19L)

119.9 257.8 (Rwys 8L/26R, 8R/26L)



NOTE: Jet aircraft only.

NOTE: GIINN Transition, ATC assigned only.

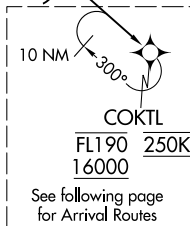
(CONTINUED ON FOLLOWING PAGE)

FLCHR TRANSITION (FLCHR.COKTL4)

GIINN TRANSITION (GIINN.COKTL4)

TQILA TRANSITION (TQILA.COKTL4)

NOTE: Chart not to scale.



See following page for Arrival Routes

SW-4, 28 NOV 2024 to 26 DEC 2024

SW-4, 28 NOV 2024 to 26 DEC 2024

RNAV 1- DME/DME/IRU or GPS.

RADAR required.

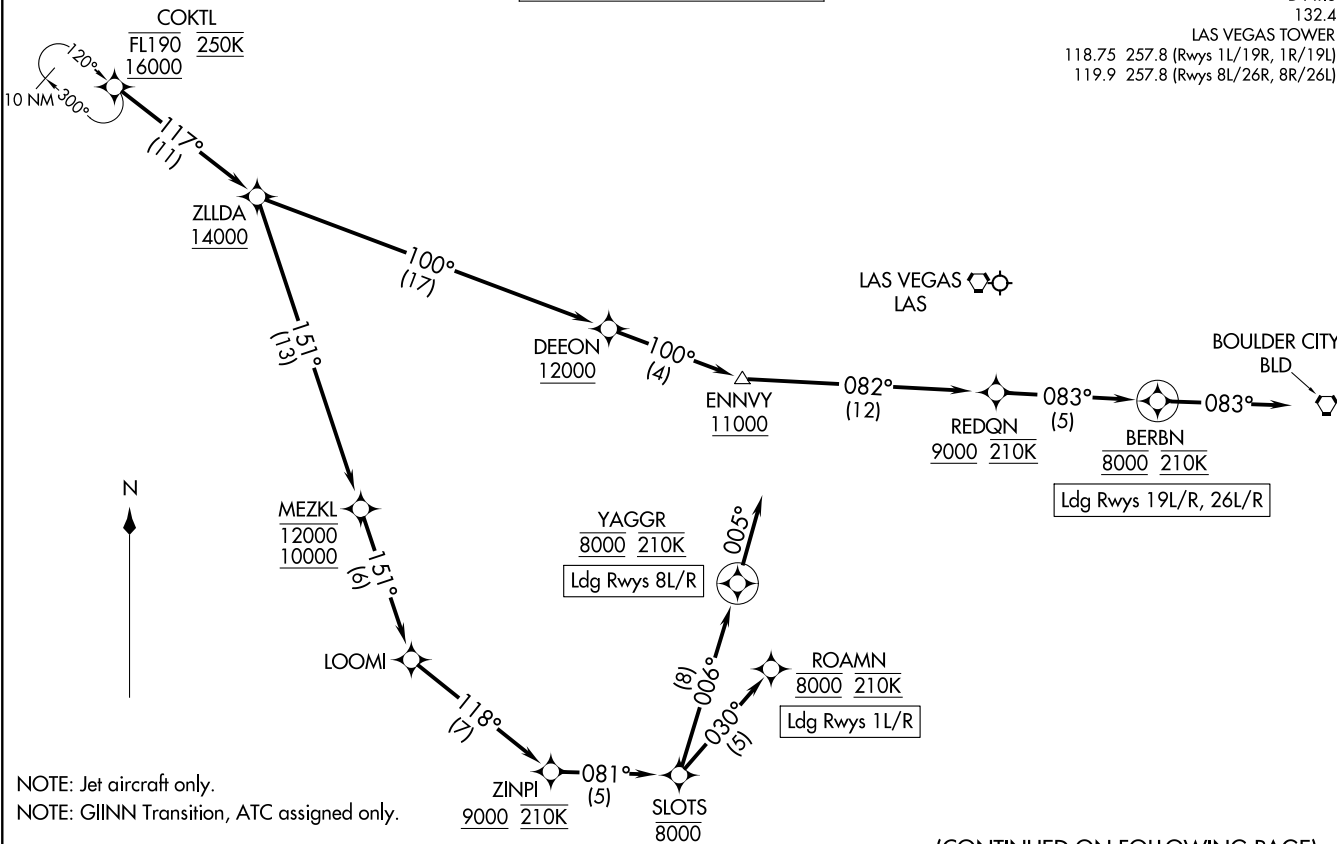
LAS VEGAS APP CON
125.025 379.15
D-ATIS
132.4

LAS VEGAS TOWER
118.75 257.8 (Rwys 1L/19R, 1R/19L)
119.9 257.8 (Rwys 8L/26R, 8R/26L)

COKTL FOUR ARRIVAL (RNAV)
(COKTL.COKTL4) 31OCT24

Arrival Routes

LAS VEGAS, NEVADA
HARRY REID INTL (LAS)



NOTE: Jet aircraft only.
NOTE: GINN Transition, ATC assigned only.

NOTE: Chart not to scale.

(CONTINUED ON FOLLOWING PAGE)

(COKTL.COKTL4) 24305

Arrival Routes

LAS VEGAS, NEVADA
HARRY REID INTL (LAS)

ARRIVAL ROUTE DESCRIPTION

From COKTL on track 117° to cross ZLLDA at or above 14000.

LANDING RUNWAYS 1L/R: From ZLLDA on track 151° to cross MEZKL between 10000 and 12000, then on track 151° to LOOMI, then on track 118° to cross ZINPI at or above 9000 and at 210K, then on track 081° to cross SLOTS at 8000, then on track 030° to cross ROAMN at 8000 and at 210K. Expect ILS or LOC RWY 1L approach or RADAR vectors to final approach course.

LANDING RUNWAYS 8L/R: From ZLLDA on track 151° to cross MEZKL between 10000 and 12000, then on track 151° to LOOMI, then on track 118° to cross ZINPI at or above 9000 and at 210K, then on track 081° to cross SLOTS at 8000, then on track 006° to cross YAGGR at 8000 and at 210K, then on track 005°. Expect RADAR vectors to final approach course.

LANDING RUNWAYS 19L/R, 26L/R: From ZLLDA on track 100° to cross DEEON at or above 12000, then on track 100° to cross ENNVY at or above 11000, then on track 082° to cross REDQN at or above 9000 and at 210K, then on track 083° to cross BERBN at 8000 and at 210K, then on track 083°. Expect RADAR vectors to final approach course.

LOST COMMUNICATIONS

LANDING RUNWAY 1L: At ROAMN proceed on the ILS or LOC RWY 1L approach.

LANDING RUNWAY 8R: At YAGGR proceed on the RNAV (RNP) RWY 8R approach, if unable, proceed via last track to intercept the final approach course; if unable, maintain 7000 direct LAS VORTAC then direct BLD VORTAC and then on the ILS or LOC RWY 26L approach.

LANDING RUNWAY 26L: At BERBN proceed on the ILS or LOC RWY 26L approach.

LANDING RUNWAY 26R: At BERBN proceed on the ILS or LOC RWY 26R approach.

SW-4, 28 NOV 2024 to 26 DEC 2024

SW-4, 28 NOV 2024 to 26 DEC 2024