

# CRESO FIVE ARRIVAL

AL-662 (FAA)

HARRY REID INTL (LAS)  
LAS VEGAS, NEVADA

LAS VEGAS APP CON  
125.475 307.25  
D-ATIS  
132.4  
LAS VEGAS TOWER  
118.75 257.8 (Rwy 1L/19R, 1R/19L)  
119.9 257.8 (Rwy 8L/26R, 8R/26L)

RADAR required

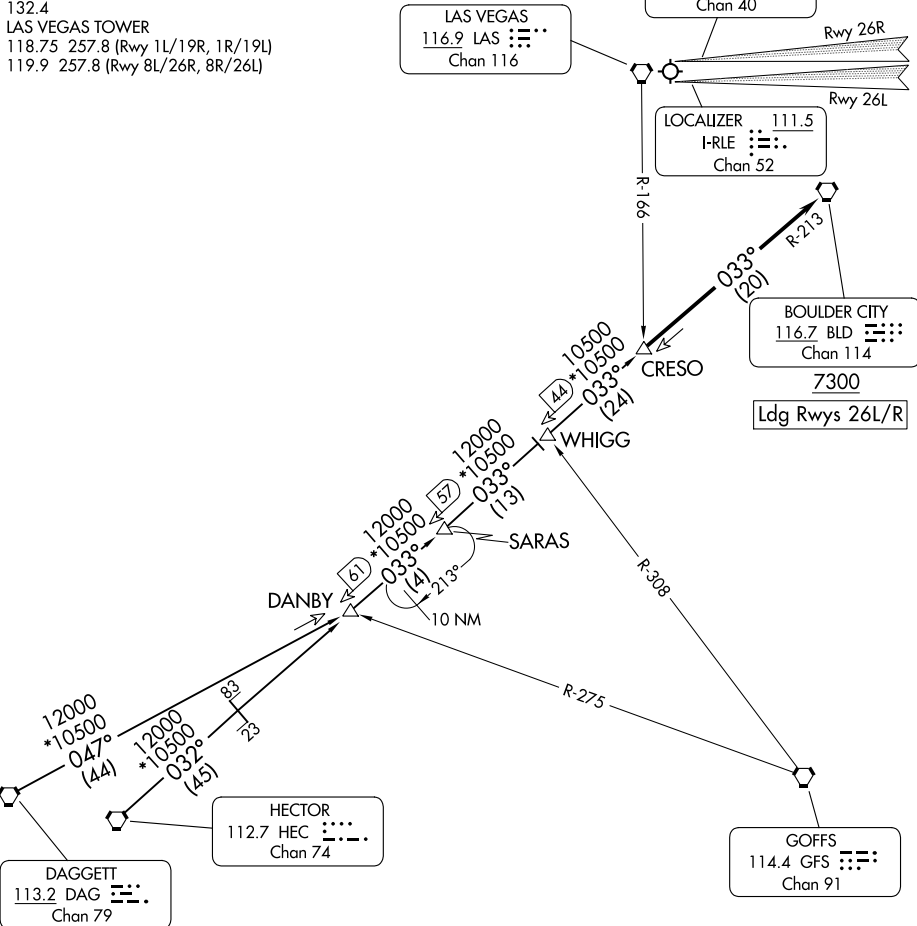
LAS VEGAS  
116.9 LAS :...  
Chan 116

LOCALIZER 110.3  
I-LAS :...  
Chan 40

LOCALIZER 111.5  
I-RLE :...  
Chan 52

BOULDER CITY  
116.7 BLD :...  
Chan 114

7300  
Ldg Rwy 26L/R



SW-4, 28 NOV 2024 to 26 DEC 2024

SW-4, 28 NOV 2024 to 26 DEC 2024

NOTE: Chart not to scale.

## ARRIVAL ROUTE DESCRIPTION

DAGGETT TRANSITION (DAG.CRESO5): From over DAG VORTAC on DAG R-047 and BLD R-213 to CRESO, thence. . . .

HECTOR TRANSITION (HEC.CRESO5): From over HEC VORTAC on HEC R-032 and BLD R-213 to CRESO, thence. . . .

. . . .From over CRESO on BLD R-213 to cross BLD VORTAC at or above 7300. Runways 1, 8, and 19 expect RADAR vectors to final approach course. From BLD VORTAC expect ILS approach Runway 26L/R.

# CRESO FIVE ARRIVAL