

HOOVER EIGHT DEPARTURE
(HOOVR8.LAS) 08SEP22

HOOVER EIGHT DEPARTURE
(HOOVR8.LAS) 24Z77

AL-662 (FAA)

HARRY REID INTL (LAS)
LAS VEGAS, NEVADA

LAS VEGAS DEP CON
 125.9 307.25 (Rwys 19L/R, 26L/R)
 133.95 353.7 (Rwys 1L/R, 8L/R)
 CLNC DEL
 118.0
 CPDLC
 GND CON
 121.1 270.8 E of 1R/19L
 121.9 254.3 W of 1L/19R
 LAS VEGAS TOWER
 118.75 257.8 (Rwys 1L/R, 19L/R)
 119.9 257.8 (Rwys 8L/R, 26L/R)

**TOP ALTITUDE:
ASSIGNED BY ATC**

RADAR and DME required

DOVE CREEK
 114.6 DVC
 Chan 93

MILFORD
 112.1 MLF
 Chan 58

MORMON MESA
 113.1 MMM
 Chan 78

PAGE
 116.45 PGA
 Chan 111(Y)

LAS VEGAS
 116.9 LAS
 Chan 116

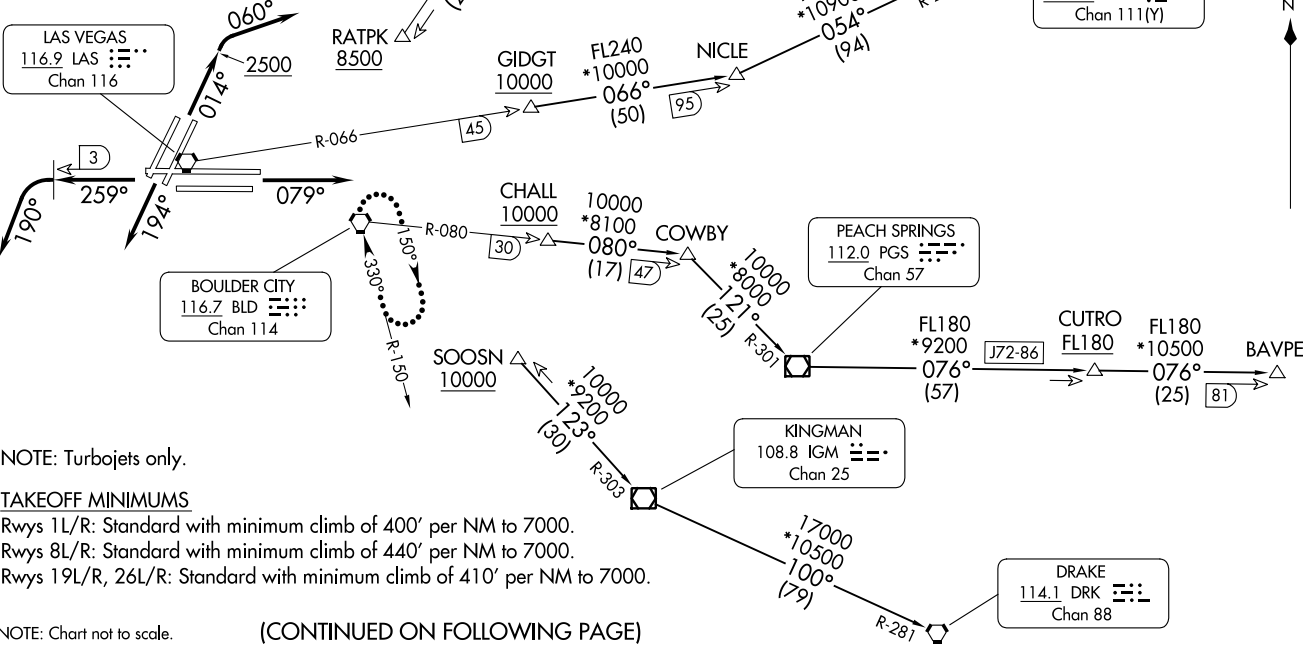
BOULDER CITY
 116.7 BLD
 Chan 114

CHALL
 10000
 *8100
 080°
 (17) (47)

PEACH SPRINGS
 112.0 PGS
 Chan 57

KINGMAN
 108.8 IGM
 Chan 25

DRAKE
 114.1 DRK
 Chan 88



NOTE: Turbojets only.

TAKEOFF MINIMUMS

Rwys 1L/R: Standard with minimum climb of 400' per NM to 7000.
 Rwys 8L/R: Standard with minimum climb of 440' per NM to 7000.
 Rwys 19L/R, 26L/R: Standard with minimum climb of 410' per NM to 7000.

NOTE: Chart not to scale.

(CONTINUED ON FOLLOWING PAGE)

LAS VEGAS, NEVADA
HARRY REID INTL (LAS)



DEPARTURE ROUTE DESCRIPTION

TAKEOFF RUNWAYS 1L/R: Climb on heading 014° to 2500, then climbing right turn heading 060°, thence. . . .

TAKEOFF RUNWAYS 8L/R: Climb on heading 079°, thence. . . .

TAKEOFF RUNWAYS 19L/R: Climb on heading 194°, thence. . . .

TAKEOFF RUNWAYS 26L/R: Climb on heading 259° until LAS VORTAC 3 DME, then climbing left turn heading 190°, thence. . . .

. . . .RADAR vectors to transition or assigned route. Maintain ATC assigned altitude, expect clearance to filed altitude two minutes after departure.

LOST COMMUNICATIONS: If no contact with ATC upon reaching 7000, proceed direct BLD VORTAC then climb in BLD VORTAC holding pattern to appropriate MEA for route of flight.

BAVPE TRANSITION (HOOVR8.BAVPE): From over CHALL on BLD R-080 and PGS R-301 to PGS VOR/DME, then on PGS R-076 to BAVPE.

DOVE CREEK TRANSITION (HOOVR8.DVC): From over GIDGT on LAS R-066 and PGA R-234 to PGA VOR/DME, then on PGA R-053 and DVC R-233 to DVC VORTAC.

DRAKE TRANSITION (HOOVR8.DRK): From over SOOSN on IGM R-303 to IGM VOR/DME, then on IGM R-100 and DRK R-281 to DRK VORTAC.

MILFORD TRANSITION (HOOVR8.MLF): From over RATPK on MMM R-199 to MMM VORTAC, then on MMM R-016 and MLF R-197 to MLF VORTAC.

SW-4, 28 NOV 2024 to 26 DEC 2024

SW-4, 28 NOV 2024 to 26 DEC 2024