

(N11TZ4, N11TZ) 31OCT24

(N11TZ4, N11TZ) 24305

AT-652 (FAA)  
Departure Routes

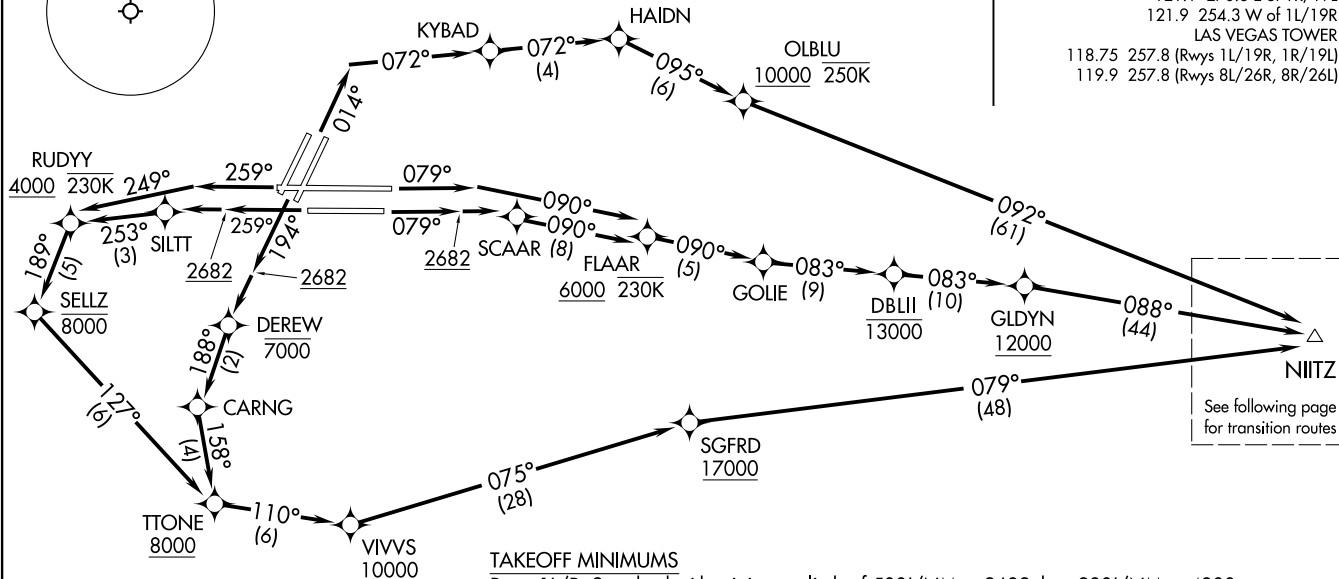
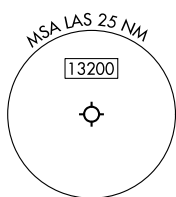
HARRY REID INTL (LAS)  
LAS VEGAS, NEVADA

**TOP ALTITUDE:  
FL190**

RNAV 1 - DME/DME/IRU or GPS.  
RADAR required for non-GPS equipped aircraft.

LAS VEGAS DEP CON  
125.9 307.25 (Rwys 19L/R, 26L/R)  
133.95 353.7 (Rwys 1L/R, 8L/R)  
D-ATIS 132.4  
CLNC DEL 118.0  
CPDLC  
GND CON  
121.1 270.8 E of 1R/19L  
121.9 254.3 W of 1L/19R  
LAS VEGAS TOWER  
118.75 257.8 (Rwys 1L/19R, 1R/19L)  
119.9 257.8 (Rwys 8L/26R, 8R/26L)

NOTE: Do not file. TUKRR and IWANS transitions assigned by ATC.  
NOTE: Turbojets only.  
NOTE: If unable to accept climb rates, advise ATC on initial contact.



**TAKEOFF MINIMUMS**

Rwys 1L/R: Standard with minimum climb of 500'/NM to 2682 then 280'/NM to 4800.  
Rwys 8L/R: Standard with minimum climb of 500'/NM to 2682.  
Rwys 19L/R: Standard with minimum climb of 571'/NM to 8000.  
Rwys 26L/R: Standard with minimum climb of 500'/NM to 2682 then 240'/NM to 5000.

NOTE: Chart not to scale.

(CONTINUED ON FOLLOWING PAGE)

(N11TZ4, N11TZ) 31OCT24

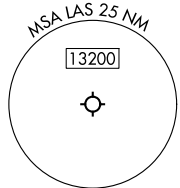
NIITZ FOUR DEPARTURE (RNAV) Transition Routes

LAS VEGAS, NEVADA  
HARRY REID INTL (LAS)

LAS VEGAS DEP CON  
 125.9 307.25 (Rwys 19L/R, 26L/R)  
 133.95 353.7 (Rwys 1L/R, 8L/R)  
 D-ATIS  
 132.  
 CLNC DEL  
 118.0  
 CPDLC  
 GND CON  
 121.1 270.8 E of 1R/19L  
 121.9 254.3 W of 1L/19R  
 LAS VEGAS TOWER  
 118.75 257.8 (Rwys 1L/19R, 1R/19L)  
 119.9 257.8 (Rwys 8L/26R, 8R/26L)

RNAV 1 - DME/DME/IRU or GPS.  
 RADAR required for non-GPS equipped aircraft.

**TOP ALTITUDE:  
 FL190**



NIITZ

IWANS

SSKEE

HOCEE

TUKRR

17000  
 \*11100  
 046°  
 (108)

17000  
 \*10600  
 068°  
 (98)

17000  
 \*9600  
 089°  
 (42)

17000  
 \*9400  
 089°  
 (42)

NOTE: Do not file. TUKRR and IWANS transitions assigned by ATC.  
 NOTE: Turbojets only.  
 NOTE: If unable to accept climb rates, advise ATC on initial contact.



NOTE: Chart not to scale.

(CONTINUED ON FOLLOWING PAGE)

(N11TZ4, N11TZ) 24305

NIITZ FOUR DEPARTURE (RNAV) Transition Routes

LAS VEGAS, NEVADA  
HARRY REID INTL (LAS)



DEPARTURE ROUTE DESCRIPTION

TAKEOFF RUNWAYS 1L/R: Climb on heading 014° to intercept course 072° to KYBAD, then on track 072° to HAIDN, then on track 095° to cross OLBLU at or above 10000 and at or below 250K, then on track 092° to NIITZ, thence . . . .

TAKEOFF RUNWAY 8L: Climb on heading 079° to intercept course 090° to cross FLAAR at or above 6000 and at or below 230K, then on track 090° to GOLIE, then on track 083° to cross DBLII at or below 13000, then on track 083° to cross GLDYN at or above 12000, then on track 088° to NIITZ, thence . . . .

TAKEOFF RUNWAY 8R: Climb on heading 079° to 2682, then direct SCAAR, then on track 090° to cross FLAAR at or above 6000 and at or below 230K, then on track 090° to GOLIE, then on track 083° to cross DBLII at or below 13000, then on track 083° to cross GLDYN at or above 12000, then on track 088° to NIITZ, thence . . . .

TAKEOFF RUNWAYS 19L/R: Climb on heading 194° to 2682, then direct DEREW to cross at or below 7000, then on track 188° to CARNG, then on track 158° to cross TTONE at or above 8000, then on track 110° to cross VIVVS at or above 10000, then on track 075° to cross SGFRD at or above 17000, then on track 079° to NIITZ, thence . . . .

TAKEOFF RUNWAY 26L: Climb on heading 259° to 2682, then direct SILTT, then on track 253° to cross RUDYY at or above 4000 and at or below 230K, then on track 189° to cross SELLZ at or below 8000, then on track 127° to cross TTONE at or above 8000, then on track 110° to cross VIVVS at or above 10000, then on track 075° to cross SGFRD at or above 17000, then on track 079° to NIITZ, thence . . . .

TAKEOFF RUNWAY 26R: Climb on heading 259° to intercept course 249° to cross RUDYY at or above 4000 and at or below 230K, then on track 189° to cross SELLZ at or below 8000, then on track 127° to cross TTONE at or above 8000, then on track 110° to cross VIVVS at or above 10000, then on track 075° to cross SGFRD at or above 17000, then on track 079° to NIITZ, thence . . . .

. . . . on (transition), maintain FL190. Expect filed altitude 10 minutes after departure.

HOCEE TRANSITION (NIITZ4.HOCEE)

IWANS TRANSITION (NIITZ4.IWANS)

SSKEE TRANSITION (NIITZ4.SSKEE)

TUKRR TRANSITION (NIITZ4.TUKRR)

SW-4, 28 NOV 2024 to 26 DEC 2024

SW-4, 28 NOV 2024 to 26 DEC 2024