

RNAV 1 - DME/DME/IRU or GPS.  
RADAR required.

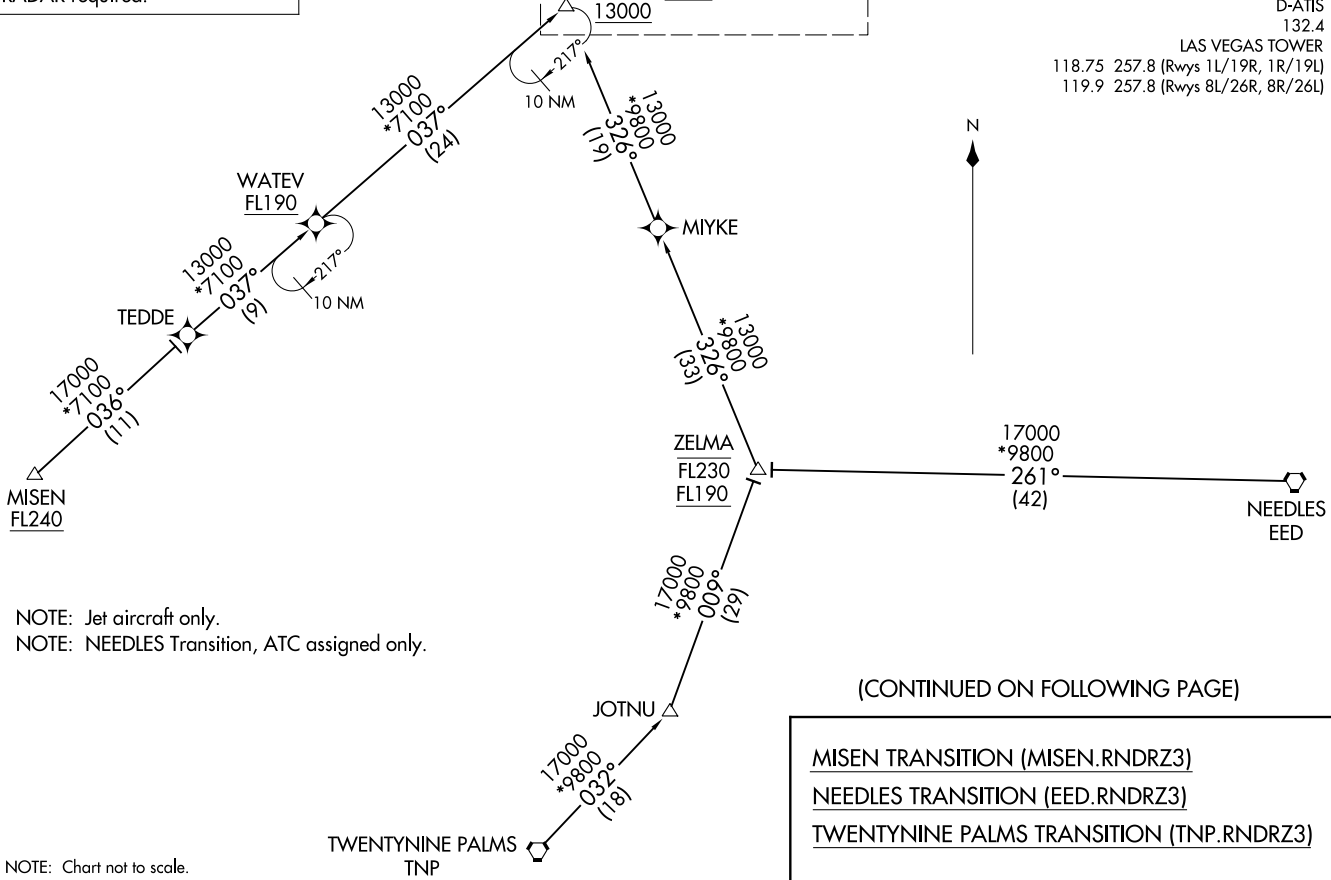
RNDRZ  
16000 250K  
13000  
See following page for Arrival Routes

LAS VEGAS APP CON  
125.025 379.15  
D-ATIS  
132.4  
LAS VEGAS TOWER  
118.75 257.8 (Rwys 1L/19R, 1R/19L)  
119.9 257.8 (Rwys 8L/26R, 8R/26L)

RNDRZ THREE ARRIVAL (RNAV) (RNDRZ.RNDRZ3) 31OCT24

Transition Routes

LAS VEGAS, NEVADA  
HARRY REID INTL (LAS)



NOTE: Jet aircraft only.  
NOTE: NEEDLES Transition, ATC assigned only.

NOTE: Chart not to scale.

(CONTINUED ON FOLLOWING PAGE)

MISEN TRANSITION (MISEN.RNDRZ3)  
NEEDLES TRANSITION (EED.RNDRZ3)  
TWENTYNINE PALMS TRANSITION (TNP.RNDRZ3)

(RNDRZ.RNDRZ3) 24305  
RNDRZ THREE ARRIVAL (RNAV) Transition Routes

AL-662 (FAA)

HARRY REID INTL (LAS)  
LAS VEGAS, NEVADA

LAS VEGAS APP CON  
125.025 379.15  
D-ATIS  
132.4  
LAS VEGAS TOWER  
118.75 257.8 (Rwys 1L/19R, 1R/19L)  
119.9 257.8 (Rwys 8L/26R, 8R/26L)

LAS VEGAS LAS

RNAV 1- DME/DME/IRU or GPS.  
RADAR required.

ENNVY  
11000

REDQN  
9000 210K

BERBN  
8000 210K

BOULDER CITY  
BLD

Ldg Rwys 19L/R, 26L/R

YAGGR  
8000 210K  
Ldg Rwys 8L/R

ROAMN  
8000 210K  
Ldg Rwys 1L/R

BUETY  
13000

GRMMA

RUMLY  
13000  
10000

HIMIT  
8800

SLOTS  
8000

RNDRZ  
16000 250K  
13000



10 NM

(CONTINUED ON FOLLOWING PAGE)

NOTE: Jet aircraft only.  
NOTE: NEEDLES Transition, ATC assigned only.

NOTE: Chart not to scale.

RNDRZ THREE ARRIVAL (RNAV)  
(RNDRZ.RNDRZ3) 31OCT24

Arrival Routes

LAS VEGAS, NEVADA  
HARRY REID INTL (LAS)

(RNDRZ.RNDRZ3) 24305  
RNDRZ THREE ARRIVAL (RNAV)

Arrival Routes

AL-662 (FAA)  
HARRY REID INTL (LAS)  
LAS VEGAS, NEVADA

ARRIVAL ROUTE DESCRIPTION

LANDING RUNWAYS 1L/R: From RNRZ on track 048° to cross RUMLY between 10000 and 13000, then on track 048° to cross HIMIT at or above 8800, then on track 048° to cross SLOTS at 8000, then on track 030° to cross ROAMN at 8000 and at 210K, then on track 030°. Expect RADAR vectors to final approach course.

LANDING RUNWAYS 8L/R: From RNRZ on track 048° to cross RUMLY between 10000 and 13000, then on track 048° to cross HIMIT at or above 8800, then on track 048° to cross SLOTS at 8000, then on track 006° to cross YAGGR at 8000 and at 210K, then on track 005°. Expect RADAR vectors to final approach course.

LANDING RUNWAYS 19L/R, 26L/R: From RNRZ on track 037° to GRMMA, then on track 019° to cross BUETY at or above 13000, then on track 019° to cross ENNVY at or above 11000, then on track 082° to cross REDQN at or above 9000 and at 210K, then on track 083° to cross BERBN at 8000 and at 210K, then on track 079°. Expect RADAR vectors to final approach course.

LOST COMMUNICATIONS

LANDING RUNWAY 8R: At YAGGR proceed on the RNAV (RNP) RWY 8R approach, if unable, proceed visually to intercept the final approach course; if unable, maintain 8000 proceed direct LAS VORTAC then maintain 7000 proceed to BLD VORTAC and then on the ILS or LOC RWY 26L approach.

SW-4, 28 NOV 2024 to 26 DEC 2024

SW-4, 28 NOV 2024 to 26 DEC 2024