

APP CRS	Rwy Idg	<b>8808</b>
<b>194°</b>	TDZE	<b>2112</b>
	Apt Elev	<b>2181</b>

# RNAV (RNP) Z RWY 19L

HARRY REID INTL (LAS)

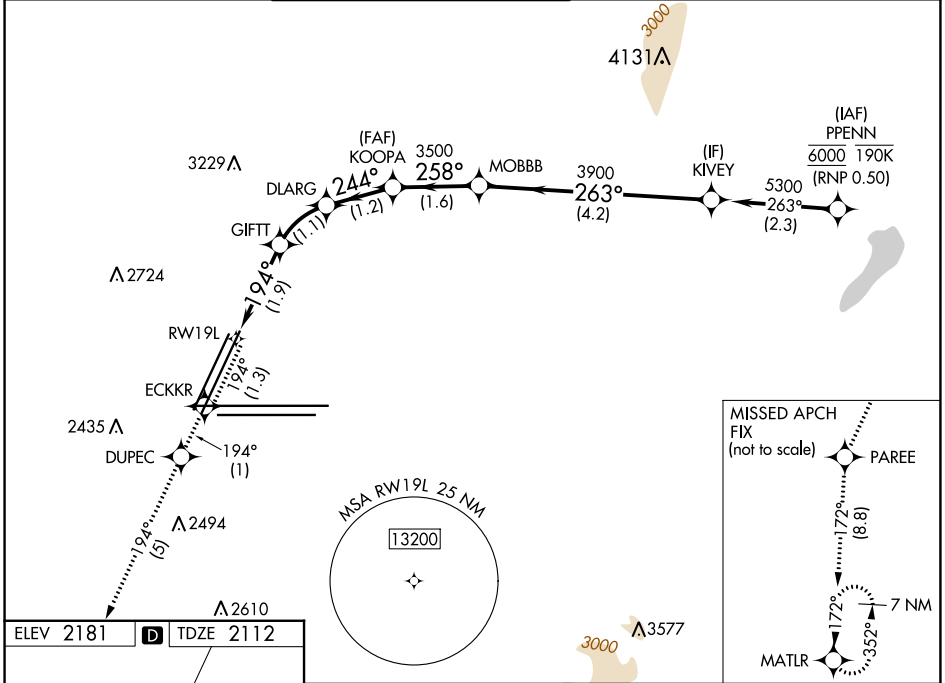
RNP AR APCH-GPS, RF, min RNP 0.50. Authorization required.  
Missed approach requires RNP <1.00.

MISSED APPROACH: Climb to 7000 on the RNAV missed approach route to MATLR and hold, continue climb-in-hold to 7000.

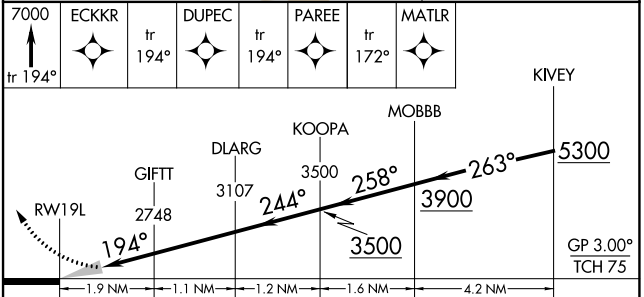
▼ For uncompensated Baro-VNAV systems, procedure NA below 0°C or above 54°C.

\*Missed approach requires minimum climb of 208 feet per NM to 4880.

D-ATIS <b>132.4</b>	LAS VEGAS APP CON	LAS VEGAS TOWER	GND CON	CLNC DEL	CPDLC
	<b>125.025 379.15 (West)</b> <b>119.775 282.2 (East)</b>	<b>118.75 257.8 (Rwy 1L/19R, 1R/19L)</b> <b>119.9 257.8 (Rwy 8L/26R, 8R/26L)</b>	<b>121.1 270.8 E of 1R/19L</b> <b>121.9 254.3 W of 1L/19R</b>	<b>118.0</b>	



ELEV 2181	<b>D</b>	TDZE 2112
-----------	----------	-----------



CATEGORY	A	B	C	D
RNP 0.10 DA*	2471-1		359 (300-1)	
RNP 0.30 DA	2559-1 $\frac{3}{8}$		447 (400-1 $\frac{3}{8}$ )	

MIRL Rwy 1R-19L  
REIL Rws 1R, 8R, 19L and 19R  
HIRL Rws 1L-19R, 8L-26R and 8R-26L

**AUTHORIZATION REQUIRED**

SW-4, 28 NOV 2024 to 26 DEC 2024

SW-4, 28 NOV 2024 to 26 DEC 2024