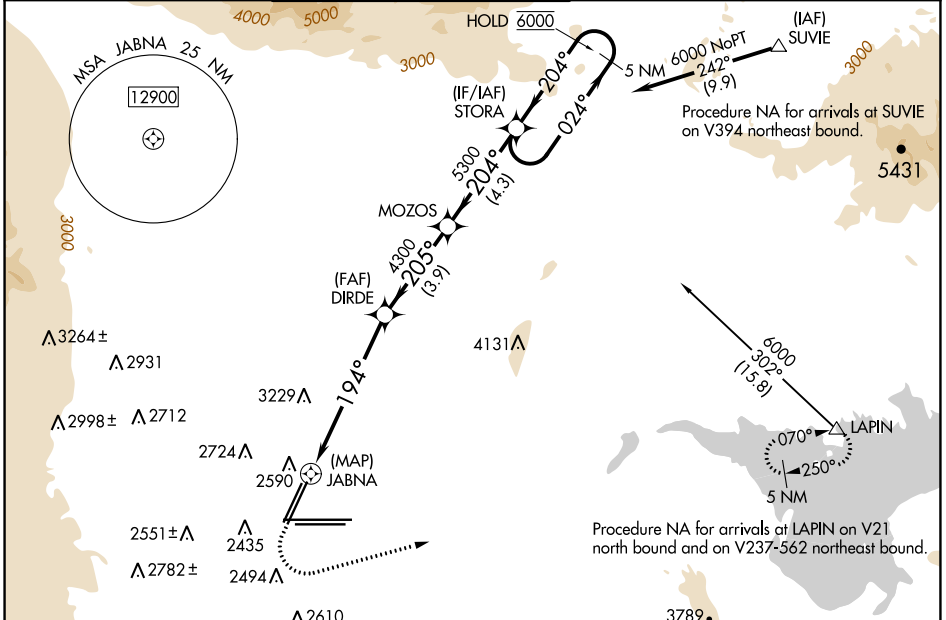


WAAS CH 45542 W19A	APP CRS 194°	Rwy Idg TDZE Apt Elev	8808 2112 2181
--	------------------------	-----------------------------	---

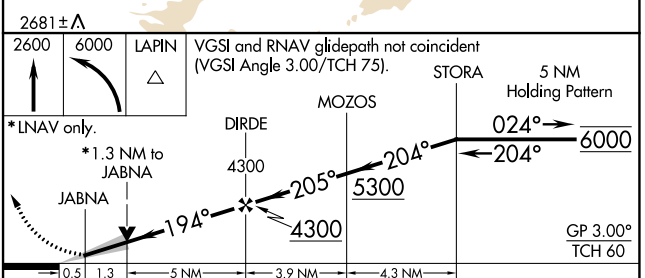
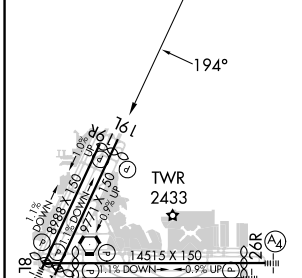
RNAV (GPS) Y RWY 19L

HARRY REID INTL (LAS)

RNP APCH.		MISSED APPROACH: Climb to 2600 then climbing left turn to 6000 direct LAPIN and hold.	
<p>▼ For uncompensated Baro-VNAV systems, LNAV/VNAV NA below 0°C and above 54°C.</p>			
D-ATIS 132.4	LAS VEGAS APP CON 125.025 379.15 (West) 119.775 282.2 (East)	LAS VEGAS TOWER 118.75 257.8 (Rwy 1L/19R, 1R/19L) 119.9 257.8 (Rwy 8L/26R, 8R/26L)	GND CON 121.1 270.8 E of 1R/19L 121.9 254.3 W of 1L/19R
			CLNC DEL 118.0 CPDLC



ELEV 2181	D	TDZE 2112
-----------	----------	-----------



CATEGORY	A	B	C	D
LPV DA	2312-3/4		200 (200-3/4)	
LNAV/VNAV DA	2677-15/8		565 (500-15/8)	
LNAV MDA	2740-1 628 (600-1)		2740-13/4 628 (600-13/4)	
C CIRCLING	3020-11/4 839 (900-11/4)	3060-11/4 879 (900-11/4)	3100-23/4 919 (1000-23/4)	3540-3 1359 (1400-3)

MIRL Rwy 1R-19L
REIL Rwy 1R, 8R, 19L and 19R
HIRL Rwy 1L-19R, 8L-26R and 8R-26L

SW-4, 28 NOV 2024 to 26 DEC 2024

SW-4, 28 NOV 2024 to 26 DEC 2024