

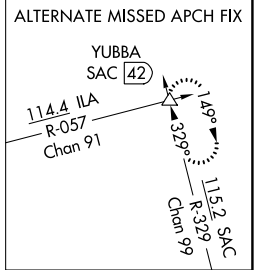
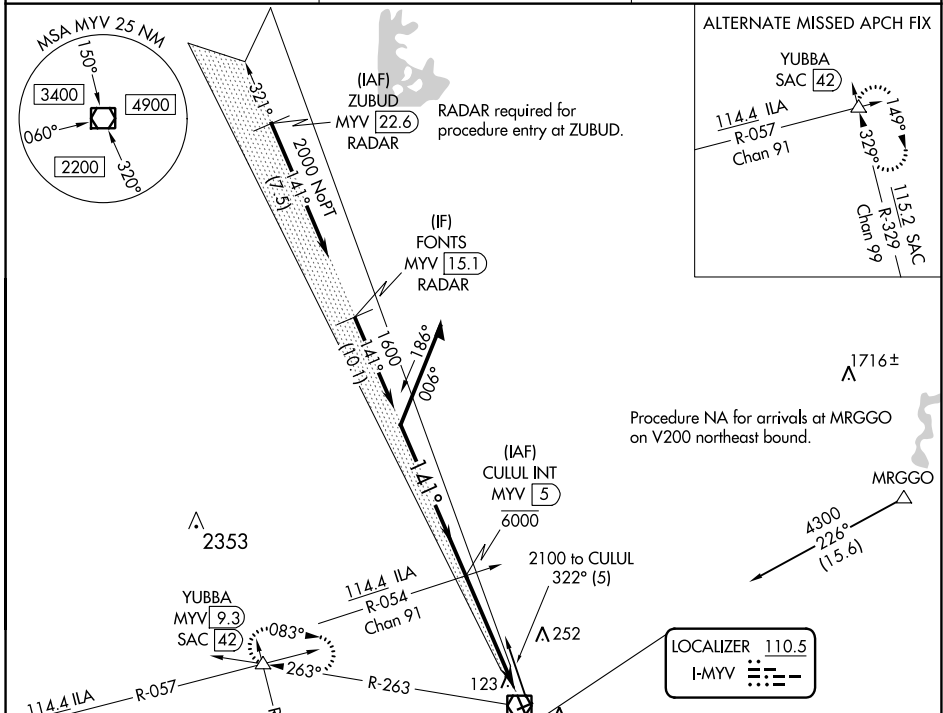
LOC I-MYV 110.5	APP CRS 141°	Rwy Idg 6007 TDZE 64 Apt Elev 64
---------------------------	------------------------	---

ILS or LOC RWY 14

YUBA COUNTY (MYV)

NA Circling Rwy 5, 23 NA at night. Autopilot coupled approach NA below 695.	MALSR MALS MALS	MISSED APPROACH: Climb to 1000 then climbing right turn to 4000 on MYV VOR/DME R-263 to YUBBA INT/ MYV 9.3 DME and hold, continue climb in hold to 4000.

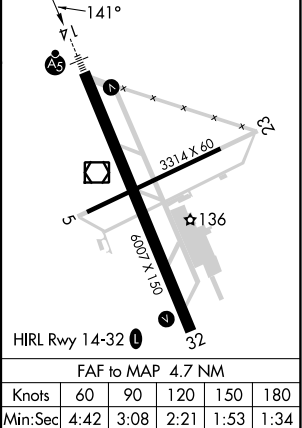
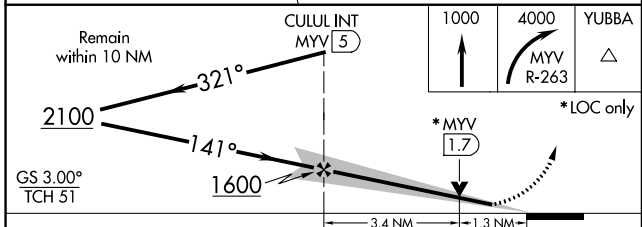
ASOS 118.475	NORCAL APP CON 125.4 259.1	UNICOM 123.05 (CTAF)
------------------------	--------------------------------------	--------------------------------



Procedure NA for arrivals at MRGGO on V200 northeast bound.

LOCALIZER 110.5
I-MYV

ELEV 64	TDZE 64
---------	---------



CATEGORY	A	B	C	D
S-ILS 14	264-1/2 200 (200-1/2)			
S-LOC 14	520-1/2	456 (500-1/2)	520-7/8	456 (500-7/8)
CIRCLING	540-1	476 (500-1)	560-1 1/2 496 (500-1 1/2)	620-2 556 (600-2)

SW-2, 28 NOV 2024 to 26 DEC 2024

SW-2, 28 NOV 2024 to 26 DEC 2024