

ATLANTIC CITY, NEW JERSEY

# HI-ILS Y or LOC Y RWY 13

LOC/DME I-PVO <b>109.1</b> Chan 28	APCH CRS <b>128°</b>	Rwy Idg <b>10,000</b> TDZE <b>75</b> Arprt Elev <b>75</b>
--	-------------------------	---

[USAF]

ATLANTIC CITY INTL (KACY)

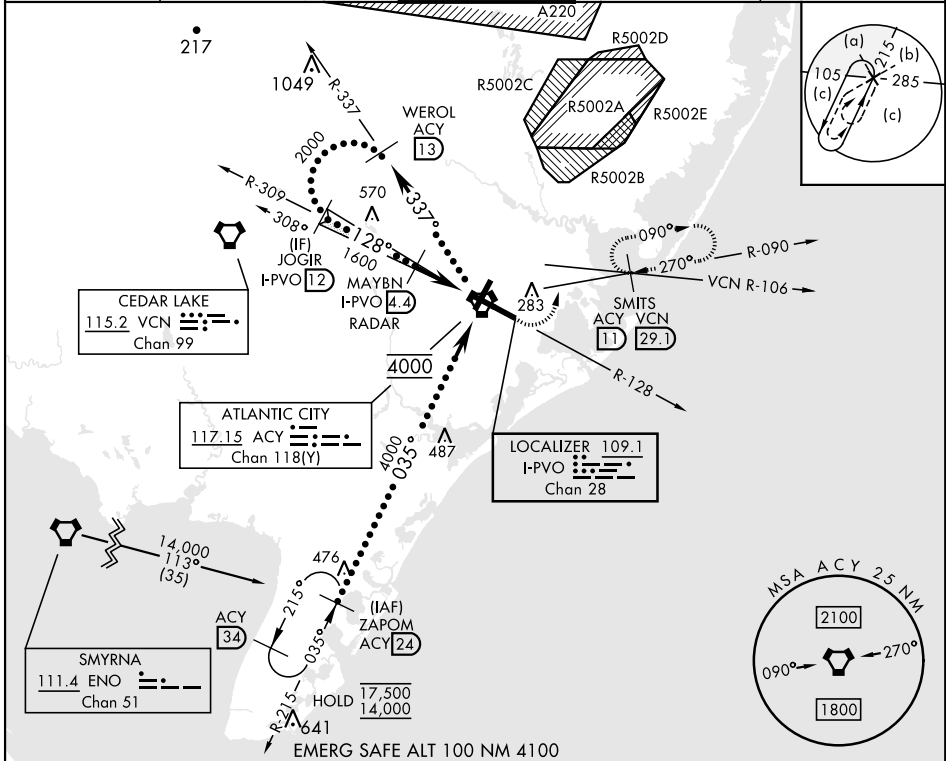
DME or RADAR required



MISSED APPROACH: Climb to 600 then climbing left turn to 2000 on ACY R-090 to SMITS/ACY 11 DME and hold.

▼\* When ALS inop, increase RVR to 40 and vis to 3/4 mile.  
 \*\* When ALS inop, increase vis to 1 1/8 miles.

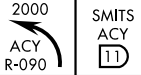
ATIS <b>125.725 316.15</b>	APP CON <b>124.6 327.125</b> (130° - 309°) <b>134.25 292.2</b> (310° - 129°)	TOWER <b>120.3 239.0</b>	GND CON <b>121.9 284.6</b>	CLNC DEL <b>127.85 353.775</b>
-------------------------------	--	-----------------------------	-------------------------------	-----------------------------------



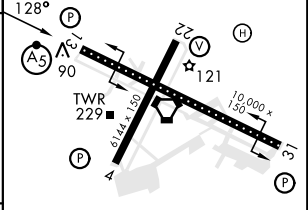
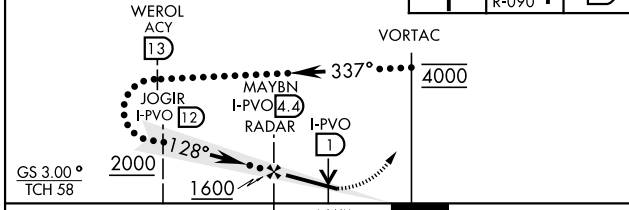
NE-2, 28 NOV 2024 to 26 DEC 2024

NE-2, 28 NOV 2024 to 26 DEC 2024

Use I-PVO DME when on the LOC course.  
 VGSI and ILS glidepath not coincident  
 (VGSI Angle 3.00/TCH 71).



ELEV	75	TDZE	75
------	----	------	----



CATEGORY	C	D	E
S-ILS 13 *	275/18	200	(200-1/2)
S-LOC 13 **	520/45	445	(500-7/8)
CIRCLING	620-1 1/2 545 (600-1 1/2)	640-2 565 (600-2)	760-2 1/2 685 (700-2 1/2)

REIL Rwy 31					
HIRL Rwy 4-22 and 13-31					
TDZL/CL Rwy 13					
FAF to MAP 4.6 NM					
Knots	120	140	160	180	200
Min:Sec	2:18	1:58	1:43	1:32	1:23

ATLANTIC CITY, NEW JERSEY

39°27'N-74°35'W

ATLANTIC CITY INTL (KACY)

Amtd 4E 31OCT24

# HI-ILS Y or LOC Y RWY 13