

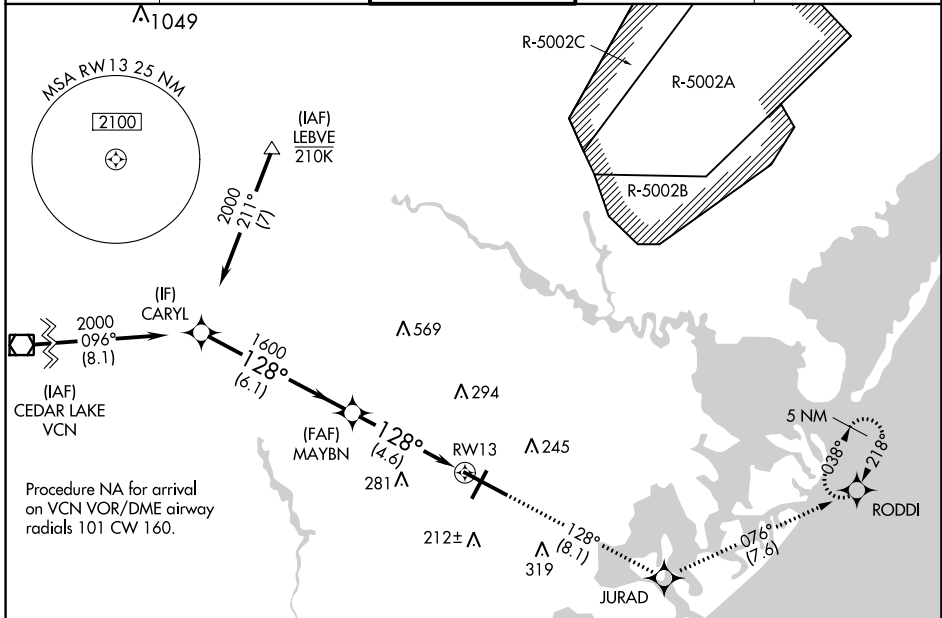
APP CRS	Rwy ldg	<b>10001</b>
<b>128°</b>	TDZE	<b>75</b>
	Apt Elev	<b>75</b>

# RNAV (RNP) Z RWY 13

ATLANTIC CITY INTL (ACY)

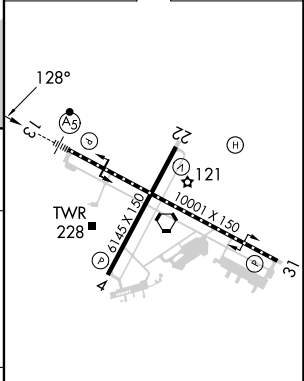
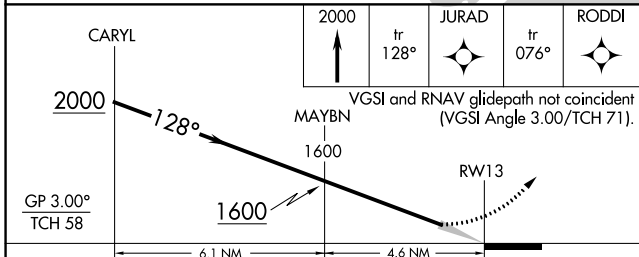
<p>For uncompensated Baro-VNAV systems, procedure NA below -13°C (9°F) or above 54°C (130°F). GPS required. For inop ALS, increase RNP 0.30 all Cats visibility to RVR 6000.</p>	<p>MALSR</p>	<p>MISSED APPROACH: Climb to 2000 on track 128° to JURAD and on track 076° to RODDI and hold.</p>

ATIS	ATLANTIC CITY APP CON	ATLANTIC CITY TOWER	GND CON	CLNC DEL
<b>125.725 316.15</b>	<b>124.6 327.125</b>	<b>120.3 239.0</b>	<b>121.9 284.6</b>	<b>127.85 353.775</b>



Procedure NA for arrival on VCN VOR/DME airway radials 101 CW 160.

ELEV	75	<b>D</b>	TDZE	75
------	----	----------	------	----



CATEGORY	A	B	C	D
RNP 0.30 DA		442/40	367 (400-¾)	

**AUTHORIZATION REQUIRED**

TDZ/CL Rwy 13  
HIRL Rwy 4-22 and 13-31  
REIL Rwy 31

NE-2, 28 NOV 2024 to 26 DEC 2024

NE-2, 28 NOV 2024 to 26 DEC 2024