

| | | |
|-------------|----------|--------------|
| APP CRS | Rwy ldg | 10001 |
| 308° | TDZE | 63 |
| | Apt Elev | 75 |

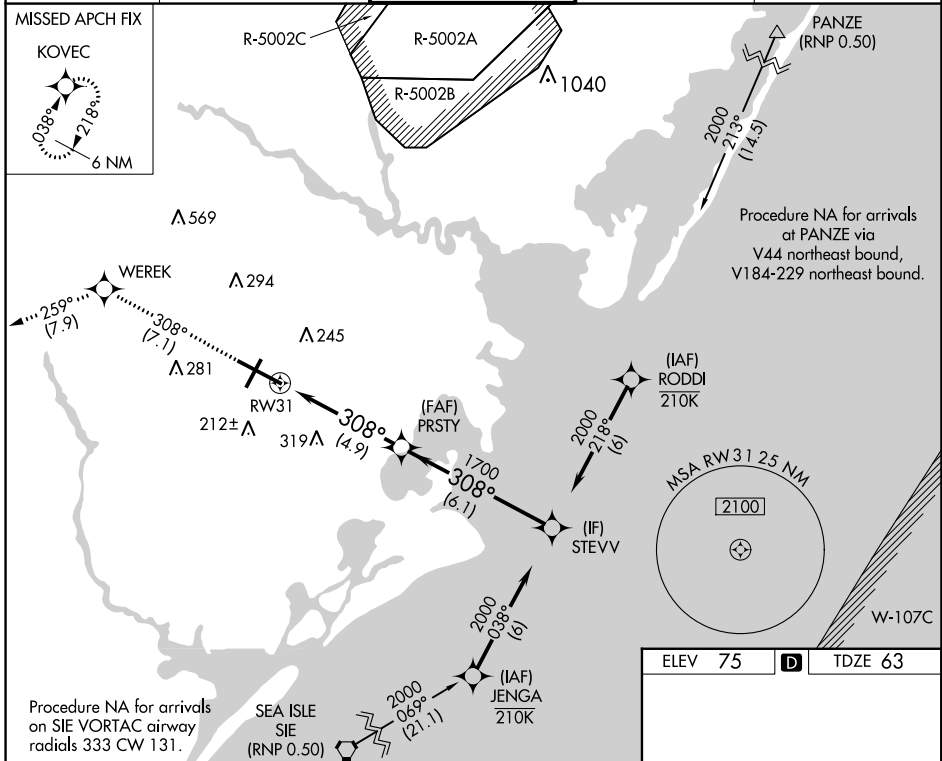
RNAV (RNP) Z RWY 31

ATLANTIC CITY INTL (ACY)

GPS Required. Procedure NA at night.
 For uncompensated Baro-VNAV systems, procedure NA below -13°C (8°F) or above 54°C (130°F).

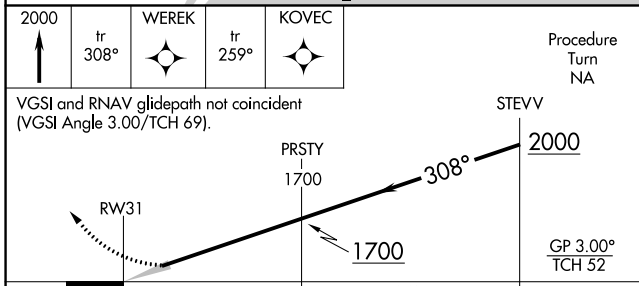
MISSED APPROACH: Climb to 2000 on track 308° to WEREK on track 259° to KOVEC and hold.

| | | | | |
|-----------------------|-----------------------|---------------------|--------------------|-----------------------|
| ATIS | ATLANTIC CITY APP CON | ATLANTIC CITY TOWER | GND CON | CLNC DEL |
| 125.725 316.15 | 124.6 327.125 | 120.3 239.0 | 121.9 284.6 | 127.85 353.775 |

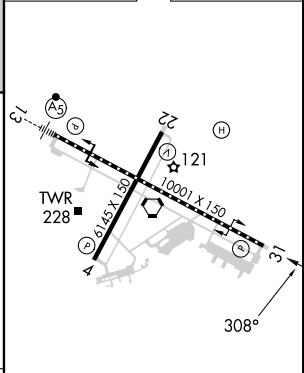


NE-2, 28 NOV 2024 to 26 DEC 2024

NE-2, 28 NOV 2024 to 26 DEC 2024



| | | |
|---------|----------|---------|
| ELEV 75 | D | TDZE 63 |
|---------|----------|---------|



| | | | | |
|-------------|---|--------|--------------|---|
| CATEGORY | A | B | C | D |
| RNP 0.30 DA | | 408/60 | 345 (400-1¼) | |

AUTHORIZATION REQUIRED

TDZ/CL Rwy 13
 HIRL Rwy 4-22 and 13-31
 REIL Rwy 31