

(BHAVN1.BDR) 24025

AL-671 (FAA)

TWEED/NEW HAVEN (HV'N)

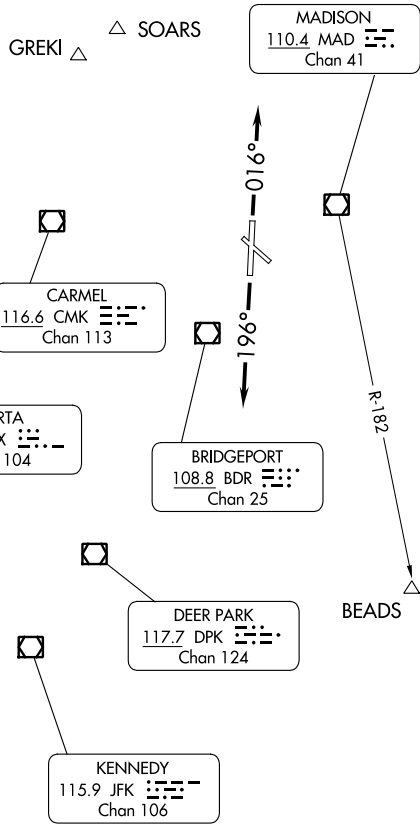
BRIDGEHAVEN ONE DEPARTURE

NEW HAVEN, CONNECTICUT

ATIS
 133.65
 CLNC DEL
 121.7
 121.7 (when twr closed)
 GND CON
 121.7
 NEW HAVEN TOWER ★
 124.8 (CTAF)
 NEW YORK DEP CON
 124.075 343.65

TOP ALTITUDE:
2000

RADAR required.



NE-1, 28 NOV 2024 to 26 DEC 2024

NE-1, 28 NOV 2024 to 26 DEC 2024

NOTE: Chart not to scale.

NOTE: BEADS Departures expect vectors to MAD R-182.

NOTE: COATE Departures expect vectors to SAX/SAX R-311.

NOTE: ELIOT authorized for all aircraft types but restricted to a final altitude of 14000 or 16000.

NOTE: NEWEL authorized only for jet aircraft requesting a final altitude of FL180 and above.

NOTE: ZIMMZ authorized for all aircraft types but restricted to a final altitude of FL180 and above.



DEPARTURE ROUTE DESCRIPTION

TAKEOFF RUNWAY 2: Climb heading 016°, thence. . .

TAKEOFF RUNWAY 20: Climb heading 196°, thence. . .

. . . expect vectors to assigned route/fix. Maintain 2000. Expect clearance to filed altitude/flight level within ten (10) minutes after departure.

BRIDGEHAVEN ONE DEPARTURE

(BHAVN1.BDR) 08SEP22

NEW HAVEN, CONNECTICUT

TWEED/NEW HAVEN (HV'N)