

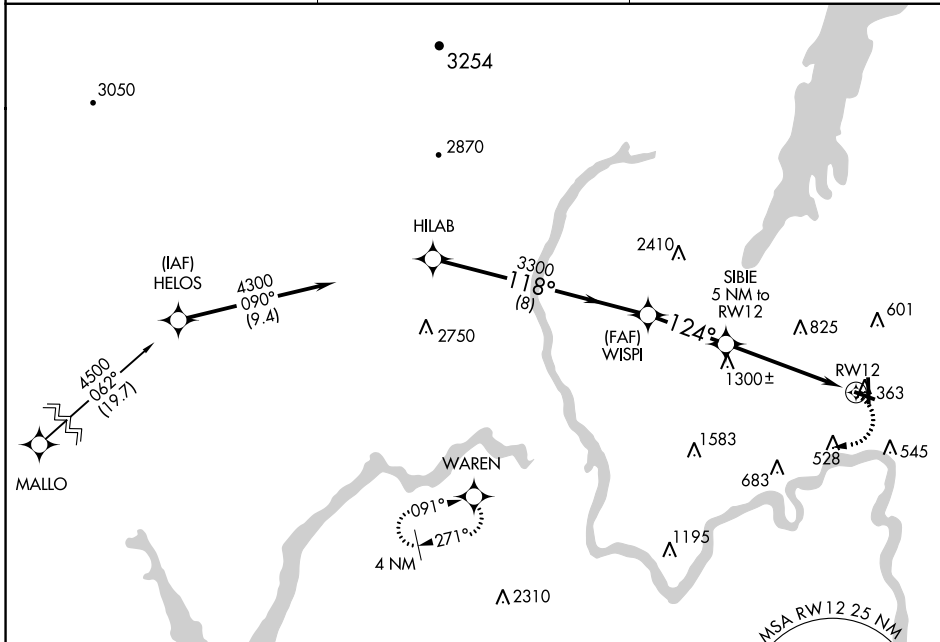
APP CRS	Rwy Idg	3999
124°	TDZE	328
	Apt Elev	328

RNAV (GPS) RWY 12

FLOYD BENNETT MEML (GFL)

NA -19°C	DME/DME RNP-0.3 NA. Helicopter visibility reduction below 1 SM NA. Night landing: Rwy 12, 30 NA.	MISSED APPROACH: Climbing right turn to 4000 direct to WAREN WP and hold.
-------------	--	---

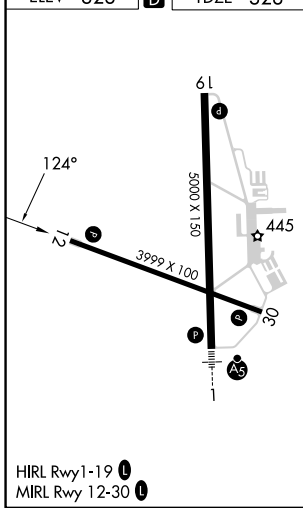
ASOS 119.925	ALBANY APP CON 132.825 307.2	UNICOM 123.0 (CTAF)
------------------------	--	-------------------------------



NE-2, 28 NOV 2024 to 26 DEC 2024

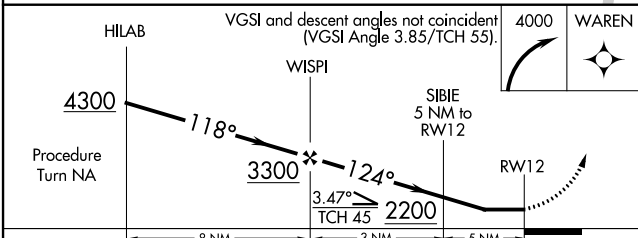
NE-2, 28 NOV 2024 to 26 DEC 2024

ELEV 328		TDZE 328
----------	--	----------



HIRL Rwy 1-19

MIRL Rwy 12-30



CATEGORY	A	B	C	D
LNAV MDA	1560-1¼ 1232 (1300-1¼)	1560-1½ 1232 (1300-1½)	1560-3	1232 (1300-3)
CIRCLING	1560-1¼ 1232 (1300-1¼)	1560-1½ 1232 (1300-1½)	1560-3	1232 (1300-3)